

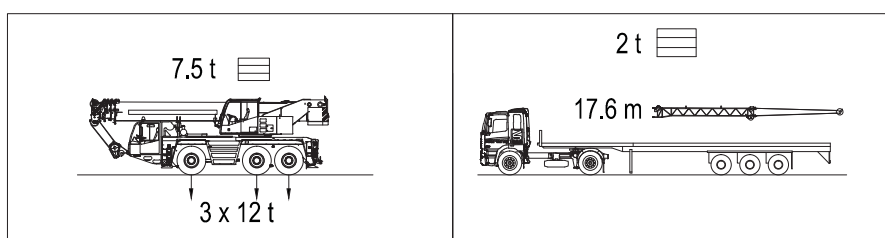
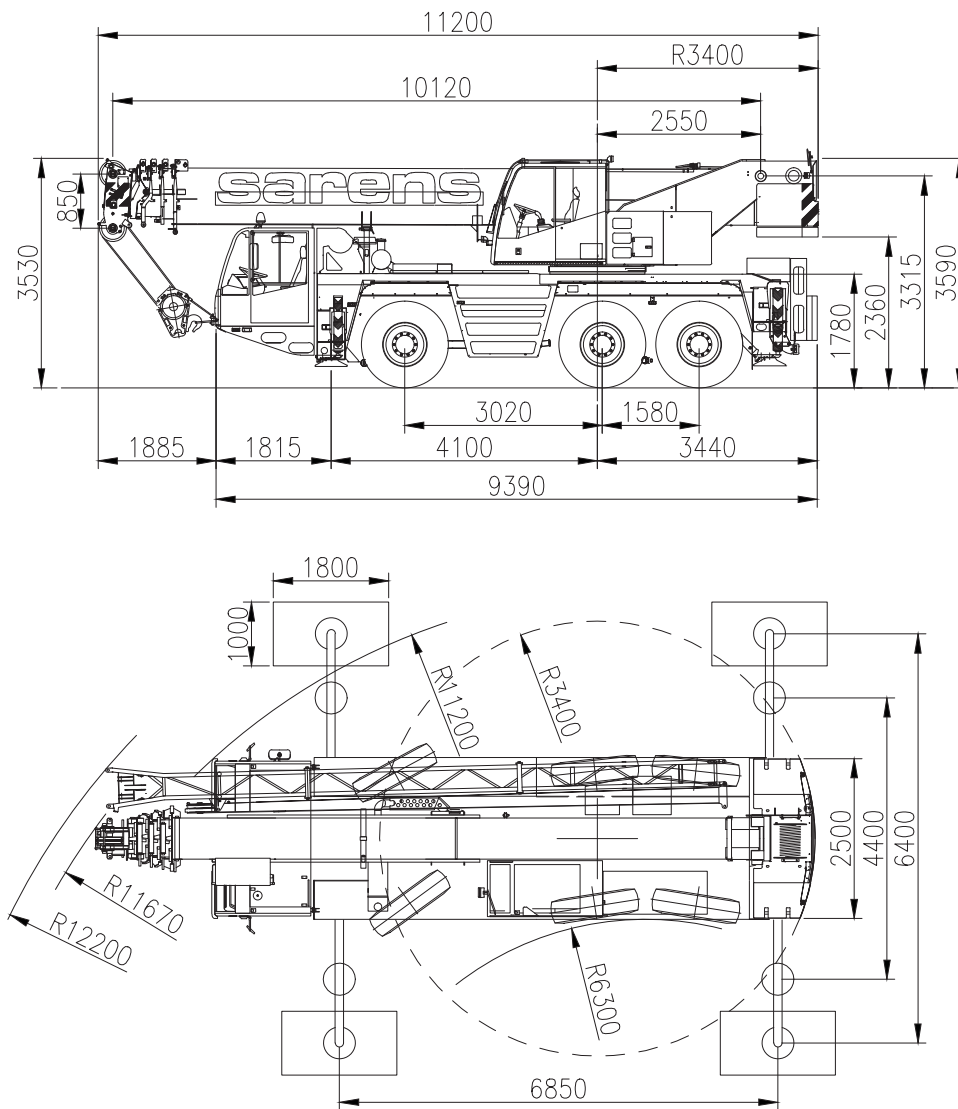


sarens
group

www.sarens.com

DEMAG AC 50-1

50 TON





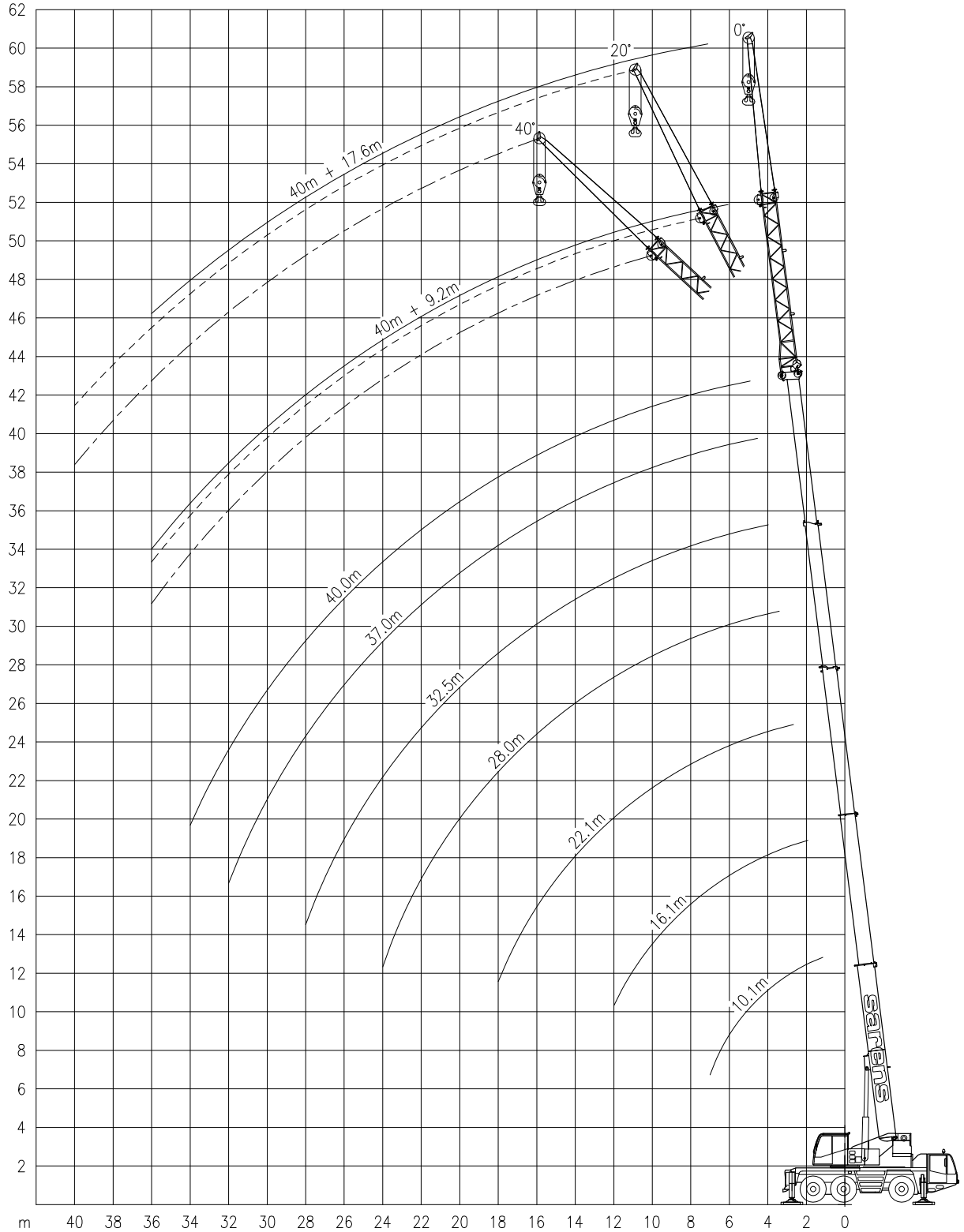
Demag AC 50-1

Working ranges
Portées

50 TON

Arbeitsbereiche
Werkbereich

Ha HaV



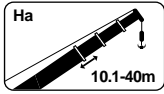


Demag AC 50-1

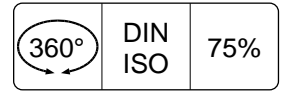
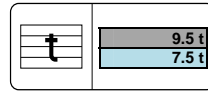
50 TON

Lifting capacities at main boom
Capacités à la flèche principale

Tragfähigkeiten am Hauptausleger
Capaciteiten aan de hoofdgiel

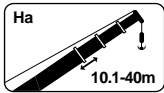


Ha

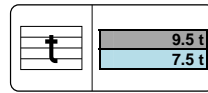


	10.1m	16.1m	22.1m	28.0m	32.5m	37.0m	40.0m	
	t	t	t	t	t	t	t	
3	50.0*	-	-	-	-	-	-	3
3	45.7	-	-	-	-	-	-	3
3,5	41,6	28.0	-	-	-	-	-	3,5
4	38,1	28.0	17.0	-	-	-	-	4
4,5	35,2	28.0	17.0	14.0	-	-	-	4,5
5	32,6	28.0	17.0	14.0	11.0	-	-	5
6	26,4	25.0	17.0	14.0	11.0	9.0	-	6
7	21,7	20.6	17.0	14.0	11.0	9.0	7.0	7
8	-	16.0	16.0	13.1	11.0	9.0	7.0	8
9	-	14.6	14.5	12.3	10.5	9.0	7.0	9
10	-	12.3	12.4	11.5	10.0	9.0	7.0	10
12	-	9.1	9.5	9.0	8.9	8.0	7.0	12
14	-	-	7.4	7.6	7.0	7.1	6.3	14
16	-	-	6.0	6.1	5.6	5.6	5.6	16
18	-	-	4.9	5.1	4.9	4.8	4.6	18
20	-	-	-	4.2	4.3	4.0	3.7	20
22	-	-	-	3.6	3.7	3.3	3.0	22
24	-	-	-	3.0	3.1	2.7	2.5	24
26	-	-	-	-	2.6	2.3	2.0	26
28	-	-	-	-	2.2	1.9	1.6	28
30	-	-	-	-	-	1.5	1.3	30
32	-	-	-	-	-	1.2	0.9	32
34	-	-	-	-	-	-	0.7	34

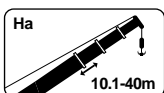
* Over rear / En arrière / Nach hinten / Over achterzijde



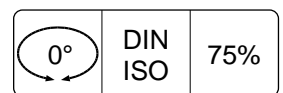
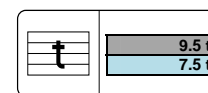
Ha



	10.1m	16.1m	22.1m	28.0m	32.5m	37.0m	40.0m	
	t	t	t	t	t	t	t	
3	40.4	-	-	-	-	-	-	3
3,5	36.4	28.0	-	-	-	-	-	3,5
4	33.0	28.0	17.0	-	-	-	-	4
4,5	28.3	27.0	17.0	14.0	-	-	-	4,5
5	22.7	21.7	17.0	14.0	11.0	-	-	5
6	16.1	16.0	16.8	14.0	11.0	9.0	-	6
7	12.2	13.0	13.5	13.0	11.0	9.0	7.0	7
8	-	10.4	10.8	10.6	10.4	9.0	7.0	8
9	-	8.5	8.9	9.1	8.5	8.6	7.0	9
10	-	7.1	7.5	7.7	7.2	7.2	7.0	10
12	-	5.2	5.6	5.8	5.9	5.5	5.3	12
14	-	-	4.3	4.5	4.6	4.2	4.0	14
16	-	-	3.4	3.6	3.6	3.3	3.1	16
18	-	-	2.7	2.9	3.0	2.6	2.5	18
20	-	-	-	2.3	2.4	2.1	1.9	20
22	-	-	-	1.9	2.0	1.7	1.4	22
24	-	-	-	1.6	1.7	1.3	1.0	24
26	-	-	-	-	1.3	0.9	0.7	26
28	-	-	-	-	1.0	0.6	-	28



Ha



	10.1m	16.1m	
	t	t	
3	15.4	-	3
3,5	13.9	14.5	3,5
4	12.6	13.2	4
4,5	11.5	12.1	4,5
5	10.4	11.1	5
6	7.9	8.6	6
7	6.2	6.8	7
8	-	5.5	8
9	-	4.6	9
10	-	3.8	10
12	-	2.8	12

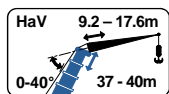


Demag AC 50-1

50 TON

Lifting capacities at folding jib
Capacités à la fléchette pliante

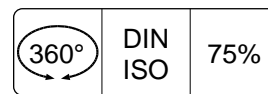
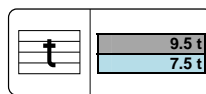
Tragfähigkeiten am wippbarer Klappspitze
Capaciteiten aan de klappij



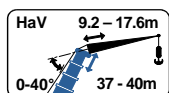
HaV



6.4m



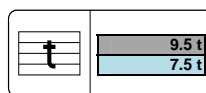
	↖ 37 m						↖ 40 m						
	9.2 m			17.6 m			9.2 m			17.6 m			
	0°	20°	40°	0°	20°	40°	0°	20°	40°	0°	20°	40°	
	t	t	t	t	t	t	t	t	t	t	t	t	
8	4.1	-	-	-	-	-	-	-	-	-	-	-	8
9	4.1	-	-	-	-	-	3.1	-	-	-	-	-	9
10	4.1	-	-	1.8	-	-	3.1	-	-	1.1	-	-	10
12	4.1	3.7	-	1.8	-	-	3.1	3.1	-	1.1	-	-	12
14	4.0	3.5	3.2	1.8	-	-	3.1	3.1	-	1.1	-	-	14
16	3.9	3.4	3.1	1.8	1.8	-	3.1	3.0	2.9	1.1	1.1	-	16
18	3.7	3.2	3.0	1.8	1.7	-	3.1	2.9	2.8	1.1	1.1	-	18
20	3.5	3.1	2.9	1.8	1.6	-	3.1	2.7	2.6	1.1	1.1	-	20
22	3.1	2.9	2.8	1.7	1.6	1.5	3.0	2.6	2.5	1.1	1.1	1.1	22
24	2.6	2.8	2.8	1.7	1.5	1.5	2.5	2.5	2.4	1.1	1.1	1.1	24
26	2.1	2.4	2.5	1.6	1.5	1.4	2.1	2.3	2.3	1.1	1.1	1.1	26
28	1.7	1.9	2.1	1.5	1.4	1.4	1.7	1.9	2.1	1.1	1.1	1.1	28
30	1.4	1.6	1.7	1.5	1.4	1.3	1.3	1.5	1.7	1.1	1.1	1.1	30
32	1.1	1.2	1.3	1.2	1.3	1.3	1.0	1.2	1.3	1.1	1.1	1.1	32
34	0.8	1.0	1.0	1.0	1.3	1.2	0.7	0.9	1.0	0.9	1.1	1.1	34
36	0.6	0.7	-	0.8	1.0	1.2	-	0.6	0.8	0.7	1.0	1.1	36
38	-	-	-	-	0.8	1.0	-	-	-	-	0.8	1.0	38
40	-	-	-	-	0.6	0.7	-	-	-	-	0.6	0.7	40



HaV



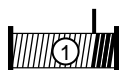
4.4m



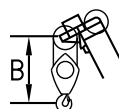
	↖ 37 m						↖ 40 m						
	9.2 m			17.6 m			9.2 m			17.6 m			
	0°	20°	40°	0°	20°	40°	0°	20°	40°	0°	20°	40°	
	t	t	t	t	t	t	t	t	t	t	t	t	
8	4.1	-	-	-	-	-	-	-	-	-	-	-	8
9	4.1	-	-	-	-	-	3.1	-	-	-	-	-	9
10	4.1	-	-	1.8	-	-	3.1	-	-	1.1	-	-	10
12	4.1	3.7	-	1.8	-	-	3.1	3.1	-	1.1	-	-	12
14	4.0	3.5	3.2	1.8	-	-	3.1	3.1	-	1.1	-	-	14
16	3.2	3.4	3.1	1.8	1.8	-	3.1	3.0	2.9	1.1	1.1	-	16
18	2.5	2.9	3.0	1.8	1.7	-	2.5	2.8	2.8	1.1	1.1	-	18
20	2.0	2.3	2.5	1.8	1.6	-	2.0	2.3	2.5	1.1	1.1	-	20
22	1.6	1.8	2.0	1.7	1.6	1.5	1.5	1.8	2.0	1.1	1.1	1.1	22
24	1.2	1.4	1.6	1.3	1.5	1.5	1.2	1.4	1.6	1.1	1.1	1.1	24
26	0.9	1.1	1.3	1.0	1.4	1.4	0.8	1.1	1.3	0.9	1.1	1.1	26
28	0.6	0.8	0.9	0.7	1.1	1.4	-	0.8	0.9	0.6	1.0	1.1	28
30	-	-	0.6	-	0.9	1.1	-	-	0.6	-	0.8	1.1	30
32	-	-	-	-	0.6	0.9	-	-	-	-	-	0.9	32
34	-	-	-	-	-	0.6	-	-	-	-	-	0.6	34

Hook block/Crane hook

Crochet-mouflé/Crochet simple



43 kN Ø 16mm



Unterflasche/Hakengehänge

Kraanblok/Kraanhaak

Capacity / Capacité Tragfähigkeit / Capaciteit	Number of sheaves / Nombre de poulies Anzahl der Rollen / Aantal schijven	Number of lines / Nombre de brins Strangzahl / Aantal parten	Weight / Poids Gewicht / Gewicht	"B"
SWL 30.1 t	3	7	370 kg	1.8 m
SWL 12.9 t	1	3	250 kg	1.8 m