





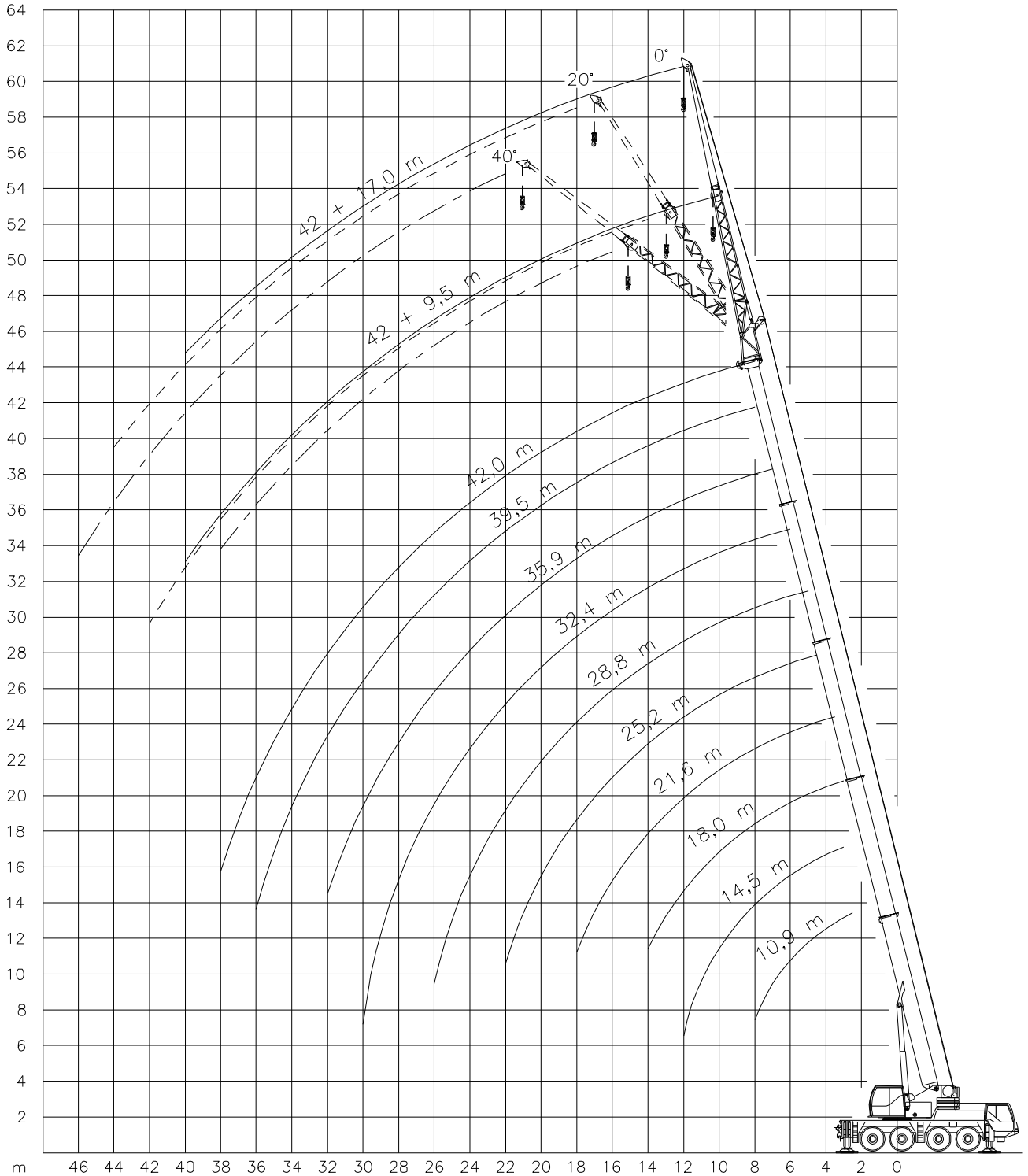
# LIEBHERR LTM 1060/2

## 60 TON

Working ranges  
Portées

Arbeitsbereiche  
Werkbereich

### T/TK



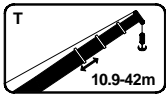


# LIEBHERR LTM 1060/2

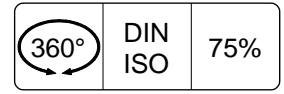
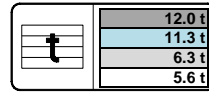
## 60 TON

Lifting capacities at main boom (excl. hook block etc.)  
Capacités à la flèche principale

Tragfähigkeiten am Hauptausleger  
Capaciteiten aan de hoofdgiel

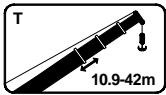


T

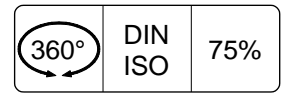
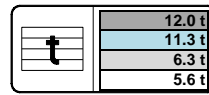


m	10.9m	14.5m	18.0m	21.6m	25.2m	28.8m	32.4m	35.9m	39.5m	42.0m	m	
	t	t	t	t	t	t	t	t	t	t		
2.5	60.0*	-	-	-	-	-	-	-	-	-	2.5	
3	51.0*	51.0	51.0	45.0	-	-	-	-	-	-	3	
3.5	46.5*	46.5	46.0	42.0	37.5	-	-	-	-	-	3.5	
4	42.5*	42.5	42.0	39.0	35.0	-	-	-	-	-	4	
4.5	39.0*	38.5	38.5	36.5	33.0	27.8	24.5	-	-	-	4.5	
5	35.5*	35.5	35.0	34.0	31.0	28.1	25.0	-	-	-	5	
6	30.5*	30.0	29.8	29.4	27.2	25.1	22.5	19.8	-	-	6	
7	25.9*	25.7	25.2	24.8	24.2	22.5	20.3	18.3	15.3	-	7	
8	22.3*	21.9	21.7	21.0	20.2	19.7	18.5	17.0	14.3	11.8	8	
9	-	-	18.9	18.9	17.1	16.8	16.1	15.6	13.4	11.1	9	
10	-	-	16.1	16.2	14.7	14.5	14.0	13.9	12.6	10.5	10	
12	-	-	12.3	12.3	11.4	12.1	10.8	10.9	10.7	9.4	8.2	12
14	-	-	-	9.6	10.2	9.5	9.2	8.8	8.7	8.5	7.5	14
16	-	-	-	-	8.2	7.6	8.1	7.1	7.6	7.2	6.9	16
18	-	-	-	-	6.8	6.6	6.8	6.2	6.4	6.1	6.0	18
20	-	-	-	-	-	6.6	5.8	5.4	5.2	4.9	4.9	20
22	-	-	-	-	-	4.9	4.8	4.6	4.4	4.1	4.1	22
24	-	-	-	-	-	-	4.2	4.0	3.8	3.5	3.5	24
26	-	-	-	-	-	-	-	3.5	3.3	3.0	3.0	26
28	-	-	-	-	-	-	-	3.1	2.9	2.6	2.6	28
30	-	-	-	-	-	-	-	-	2.5	2.2	2.2	30
32	-	-	-	-	-	-	-	-	2.2	1.9	1.9	32
34	-	-	-	-	-	-	-	-	-	1.6	1.6	34
36	-	-	-	-	-	-	-	-	-	1.3	1.4	36
38	-	-	-	-	-	-	-	-	-	-	1.1	38

\* Over rear / En arrière / Nach hinten / Over achterzijde



T



m	10.9m	14.5m	18.0m	21.6m	25.2m	28.8m	32.4m	35.9m	39.5m	42.0m	m
	t	t	t	t	t	t	t	t	t	t	
3	43.5	43.5	43.0	-	-	-	-	-	-	-	3
3.5	39.5	39.0	38.5	36.0	-	-	-	-	-	-	3.5
4	35.5	35.0	33.5	31.0	-	-	-	-	-	-	4
4.5	32.5	32.0	28.8	26.6	25.2	23.5	-	-	-	-	4.5
5	29.5	28.3	27.2	23.3	22.8	20.9	-	-	-	-	5
6	24.2	23.1	21.6	18.8	19.0	17.4	16.5	-	-	-	6
7	18.7	18.8	17.8	17.1	15.9	15.3	13.9	13.6	-	-	7
8	14.9	15.6	14.9	14.5	13.5	13.6	12.4	12.2	11.3	10.1	8
9	-	12.9	12.8	12.9	12.1	11.8	11.2	10.6	9.9	9.5	9
10	-	10.9	11.3	11.3	10.8	10.4	9.9	9.3	8.7	8.6	10
12	-	8.1	8.4	8.7	8.5	8.3	7.8	7.4	6.9	6.8	12
14	-	-	6.6	6.9	6.8	6.7	6.4	6.0	5.5	5.5	14
16	-	-	-	5.5	5.3	5.3	5.1	4.9	4.5	4.5	16
18	-	-	-	4.6	4.4	4.3	4.2	4.0	3.6	3.6	18
20	-	-	-	-	3.7	3.6	3.5	3.3	2.9	2.9	20
22	-	-	-	-	3.2	3.1	2.9	2.7	2.4	2.4	22
24	-	-	-	-	-	2.6	2.4	2.3	1.9	1.9	24
26	-	-	-	-	-	-	2.1	1.9	1.6	1.6	26
28	-	-	-	-	-	-	1.7	1.6	1.3	1.3	28
30	-	-	-	-	-	-	-	1.3	1.0	1.0	30
32	-	-	-	-	-	-	-	1.0	0.8	0.8	32
34	-	-	-	-	-	-	-	-	-	-	34
36	-	-	-	-	-	-	-	-	-	-	36
38	-	-	-	-	-	-	-	-	-	-	38

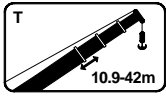


# LIEBHERR LTM 1060/2

## 60 TON

Lifting capacities at main boom (excl.hook block etc.)  
Capacités à la flèche principale

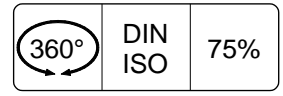
Tragfähigkeiten am Hauptausleger  
Capaciteiten aan de hoofdgiel



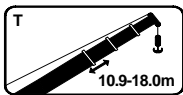
T



12.0 t
11.3 t
6.3 t
5.6 t



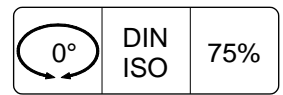
	10.9m	14.5m	18.0m	21.6m	25.2m	28.8m	32.4m	35.9m	39.5m	42.0m	
3	18.8	17.6	16.4	-	-	-	-	-	-	-	3
3,5	15.5	18.2	16.4	13.2	-	-	-	-	-	-	3,5
4	18.1	16.5	14.7	13.2	-	-	-	-	-	-	4
4,5	16.3	15.1	12.7	12.1	11.2	8.9	-	-	-	-	4,5
5	14.3	13.3	12.9	12.0	10.4	9.4	-	-	-	-	5
6	11.3	11.1	10.5	9.8	8.9	7.9	7.6	-	-	-	6
7	9.1	9.1	9.0	8.9	8.4	7.7	7.2	6.7	-	-	7
8	7.3	7.6	7.6	7.5	7.2	6.9	6.4	6.0	5.4	5.3	8
9	-	6.5	6.5	6.5	6.2	5.9	5.5	5.2	4.6	4.6	9
10	-	5.3	5.5	5.6	5.4	5.2	4.8	4.5	4.0	3.9	10
12	-	3.9	4.0	4.3	4.1	4.0	3.7	3.4	3.0	2.9	12
14	-	-	3.1	3.3	3.1	3.1	2.8	2.6	2.2	2.2	14
16	-	-	-	2.6	2.4	2.4	2.2	1.9	1.6	1.6	16
18	-	-	-	2.0	1.9	1.8	1.6	1.4	1.1	1.1	18
20	-	-	-	-	1.5	1.4	1.2	1.0	-	-	20
22	-	-	-	-	1.2	1.1	-	-	-	-	22
24	-	-	-	-	-	0.8	-	-	-	-	24



T

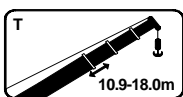


12.0 t
11.3 t
6.3 t
5.6 t



	10.9m		14.5m		18.0m		
	○	●	○	●	○	●	
3	14.1	8.5	14.5	9.0	14.8	9.3	3
3,5	12.5	7.5	13	7.9	13.3	8.2	3,5
4	11.2	6.6	11.7	7.0	12	7.3	4
4,5	10.1	5.8	10.6	6.3	10.9	6.6	4,5
5	9.1	5.1	9.6	5.6	9.9	5.9	5
6	7.5	4.0	8	4.5	8.3	4.8	6
7	6.3	3.2	6.8	3.7	7.1	4.0	7
8	5.3	2.5	5.8	3.0	6.1	3.3	8
9	-	-	4.9	2.4	5.3	2.7	9
10	-	-	4.2	1.9	4.6	2.2	10
12	-	-	3.2	2.2	3.5	-	12
14	-	-	-	-	2.7	-	14

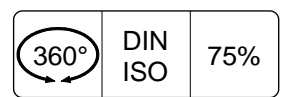
○ = banden 16.00 R 25  
● = banden 14.00 R 25



T



12.0 t
11.3 t
6.3 t
5.6 t



	10.9m		14.5m		18.0m		
	○	●	○	●	○	●	
3	-	-	-	-	-	-	3
4	-	-	-	-	-	-	4
5	-	-	7.6	4.9	7.4	4.7	5
6	6.4	4.0	6.0	3.6	5.7	3.4	6
7	5.1	3.0	5.7	3.6	4.5	3.2	7
8	4.1	2.3	4.7	2.8	5	2.6	8
9	-	-	3.9	2.2	4.2	2.1	9
10	-	-	3.2	-	3.6	-	10
12	-	-	2.2	-	2.5	-	12
14	-	-	-	-	1.8	-	14

○ = banden 16.00 R 25  
● = banden 14.00 R 25

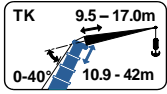


# LIEBHERR LTM 1060/2

# 60 TON

Lifting capacities at folding jib (excl. hook block etc.)  
Capacités à la fléchette pliante

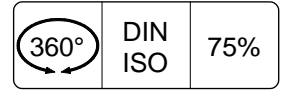
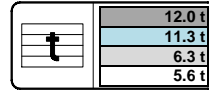
Tragfähigkeiten am wippbarer Klappspitze  
Capaciteiten aan de klapjib



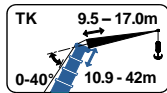
TK



6.3m



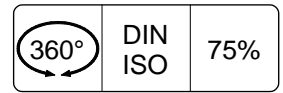
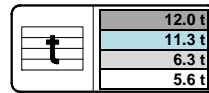
m	↕ 10.9m						↕ 32.4m						↕ 35.9m						m
	9.5m			17.0m			9.5m			17.0m			9.5m			17.0m			
	0°	20°	40°	0°	20°	40°	0°	20°	40°	0°	20°	40°	0°	20°	40°	0°	20°	40°	
3	11.4	-	-	-	-	-	-	-	-	-	-	-	-	-	-	-	-	-	3
3.5	11.4	-	-	-	-	-	-	-	-	-	-	-	-	-	-	-	-	-	3.5
4	11.4	-	-	5.7	-	-	-	-	-	-	-	-	-	-	-	-	-	-	4
4.5	11.4	-	-	5.7	-	-	-	-	-	-	-	-	-	-	-	-	-	-	4.5
5	11.4	-	-	5.7	-	-	-	-	-	-	-	-	-	-	-	-	-	-	5
6	11.4	9.2	-	5.7	-	-	-	-	-	-	-	-	-	-	-	-	-	-	6
7	11.4	8.6	-	5.5	-	-	-	-	-	-	-	-	-	-	-	-	-	-	7
8	10.7	8.0	6.5	5.2	-	-	11.4	-	-	-	-	-	-	9.2	-	-	-	-	8
9	9.9	7.6	6.2	4.9	-	-	10.8	-	-	4.6	-	-	-	9.0	-	-	-	-	9
10	9.2	7.3	5.9	4.6	3.7	-	10.2	8.2	-	4.5	-	-	-	8.5	-	-	4.2	-	10
12	8.0	6.6	5.5	4.1	3.4	-	9.2	7.7	-	4.3	-	-	-	7.7	7.4	-	4.0	-	12
14	7.0	6.1	5.2	3.7	3.1	2.7	8.3	7.4	6.3	4.1	-	-	-	7.0	6.7	6.0	3.8	-	14
16	6.1	5.6	5.0	3.3	2.9	2.5	6.9	7.1	6.1	3.9	3.1	-	-	6.3	6.0	5.8	3.7	3.1	16
18	-	-	-	3.1	2.7	2.4	5.8	6.2	5.9	3.7	3.0	-	-	5.6	5.5	5.6	3.6	2.8	18
20	-	-	-	2.8	2.5	2.3	4.6	4.9	5.1	3.5	2.9	2.4	-	4.6	4.9	5.1	3.4	2.7	2.4
22	-	-	-	2.6	2.4	2.3	4.0	4.2	4.4	3.4	2.8	2.4	-	4.2	4.1	4.4	3.3	2.6	2.4
24	-	-	-	2.4	2.3	-	3.6	3.7	3.8	3.2	2.7	2.3	-	3.7	3.8	3.9	3.2	2.6	2.3
26	-	-	-	-	-	-	3.3	3.3	3.5	3.1	2.6	2.3	-	3.2	3.4	3.5	3.0	2.5	2.3
28	-	-	-	-	-	-	3.0	3.1	3.2	2.7	2.5	2.3	-	2.8	2.9	3.0	2.8	2.5	2.2
30	-	-	-	-	-	-	2.6	2.7	2.8	2.5	2.4	2.2	-	2.4	2.5	2.6	2.6	2.5	2.2
32	-	-	-	-	-	-	2.3	2.4	2.4	2.3	2.4	2.2	-	2.1	2.2	2.3	2.2	2.4	2.2
34	-	-	-	-	-	-	2.0	2.1	2.1	2.1	2.2	2.2	-	1.8	1.9	2.0	1.9	2.2	2.2
36	-	-	-	-	-	-	1.7	1.8	1.8	1.9	2.1	2.2	-	1.5	1.6	1.7	1.7	1.9	2.1
38	-	-	-	-	-	-	1.4	1.5	-	1.7	1.8	1.9	-	1.3	1.4	1.4	1.5	1.6	1.8
40	-	-	-	-	-	-	-	-	-	1.4	1.6	1.7	-	1.1	1.1	1.1	1.3	1.4	1.5
42	-	-	-	-	-	-	-	-	-	1.2	1.4	1.4	-	0.9	0.9	-	1.1	1.2	1.3
44	-	-	-	-	-	-	-	-	-	1.1	1.1	1.1	-	-	-	-	0.9	1.0	1.1
46	-	-	-	-	-	-	-	-	-	0.9	0.9	-	-	-	-	-	0.7	0.8	0.8
48	-	-	-	-	-	-	-	-	-	-	-	-	-	-	-	-	0.6	0.7	-



TK



6.3m



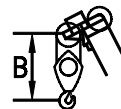
m	↕ 39.5m						↕ 42.0m						m
	9.5m			17.0m			9.5m			17.0m			
	0°	20°	40°	0°	20°	40°	0°	20°	40°	0°	20°	40°	
9	7.0	-	-	-	-	-	-	-	-	-	-	-	9
10	6.9	-	-	-	-	-	6.0	-	-	-	-	-	10
12	6.4	6.0	-	3.6	-	-	5.9	5.4	-	3.5	-	-	12
14	5.9	5.6	-	3.5	-	-	5.4	5.1	-	3.3	-	-	14
16	5.4	5.2	4.9	3.4	-	-	5.0	4.7	4.6	3.2	-	-	16
18	4.9	4.9	4.7	3.3	2.8	-	4.6	4.4	4.4	3.1	2.8	-	18
20	4.5	4.5	4.5	3.2	2.7	2.4	4.2	4.2	4.1	3.1	2.7	-	20
22	3.9	4.1	4.3	3.1	2.7	2.3	3.9	3.8	3.9	3.0	2.6	2.3	22
24	3.4	3.6	3.8	3.0	2.6	2.3	3.3	3.5	3.7	2.9	2.5	2.3	24
26	2.9	3.1	3.2	2.9	2.5	2.2	2.8	3.0	3.2	2.7	2.5	2.2	26
28	2.4	2.7	2.8	2.6	2.4	2.2	2.4	2.6	2.8	2.5	2.4	2.2	28
30	2.1	2.3	2.4	2.3	2.4	2.2	2.0	2.2	2.3	2.2	2.4	2.2	30
32	1.8	1.9	2.0	1.9	2.2	2.2	1.7	1.9	2.0	1.9	2.2	2.2	32
34	1.5	1.6	1.7	1.6	1.9	2.2	1.4	1.6	1.7	1.6	1.9	2.1	34
36	1.2	1.4	1.4	1.4	1.7	1.8	1.2	1.3	1.4	1.3	1.6	1.8	36
38	1.0	1.1	1.2	1.2	1.4	1.6	1.0	1.1	1.1	1.1	1.4	1.5	38
40	0.8	0.9	0.9	1.0	1.2	1.3	0.8	0.9	0.9	0.9	1.1	1.3	40
42	0.6	0.7	0.7	0.8	1.0	1.1	0.6	0.7	0.7	0.7	0.9	1.1	42
44	-	-	-	0.6	0.8	0.9	-	-	-	0.6	0.8	0.9	44
46	-	-	-	-	0.6	0.7	-	-	-	-	0.6	0.7	46

Hook block/Crane hook

Crochet-mouflé/Crochet simple



43 kN Ø 17mm



Unterflasche/Hakengehänge

Kraanblok/Kraanhaak

Capacity / Capacité Tragfähigkeit / Capaciteit	Number of sheaves / Nombre de poulies Anzahl der Rollen / Aantal schijven	Number of lines / Nombre de brins Strangzahl / Aantal parten	Weight / Poids Gewicht / Gewicht	"B"
SWL 16.0 t	1	3	235 kg	1.8 m

