



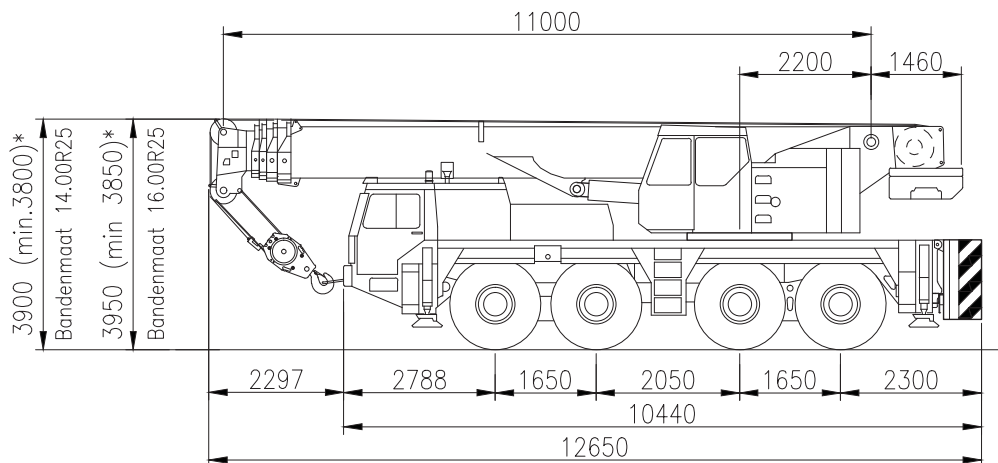
# sarens

group

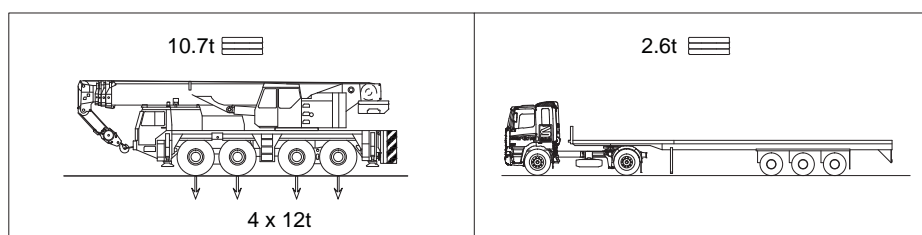
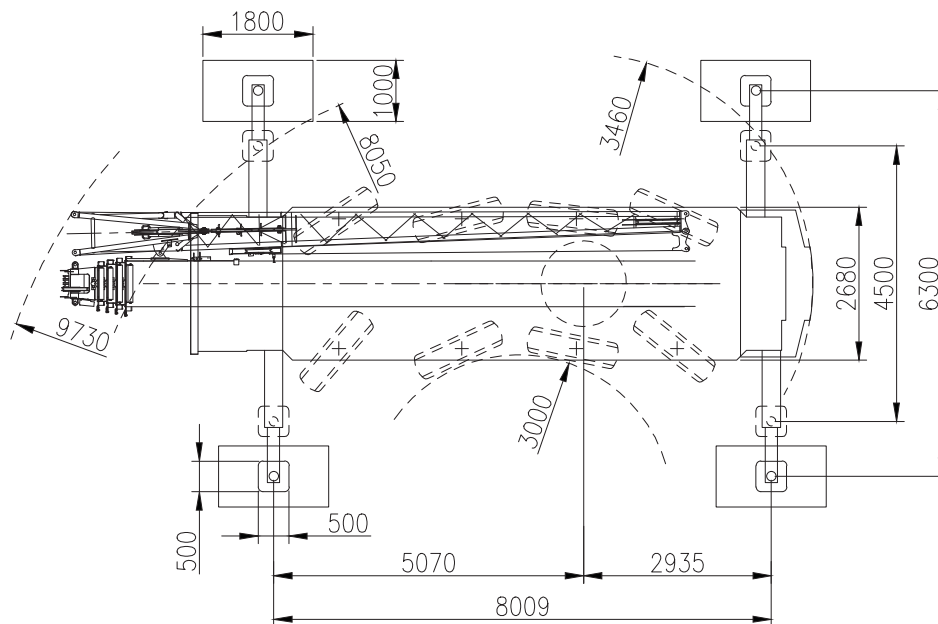
[www.sarens.com](http://www.sarens.com)

## LIEBHERR LTM 1070-4.1

### 70 TON



\* Bij een vlakke ondergrond/On a flat surface





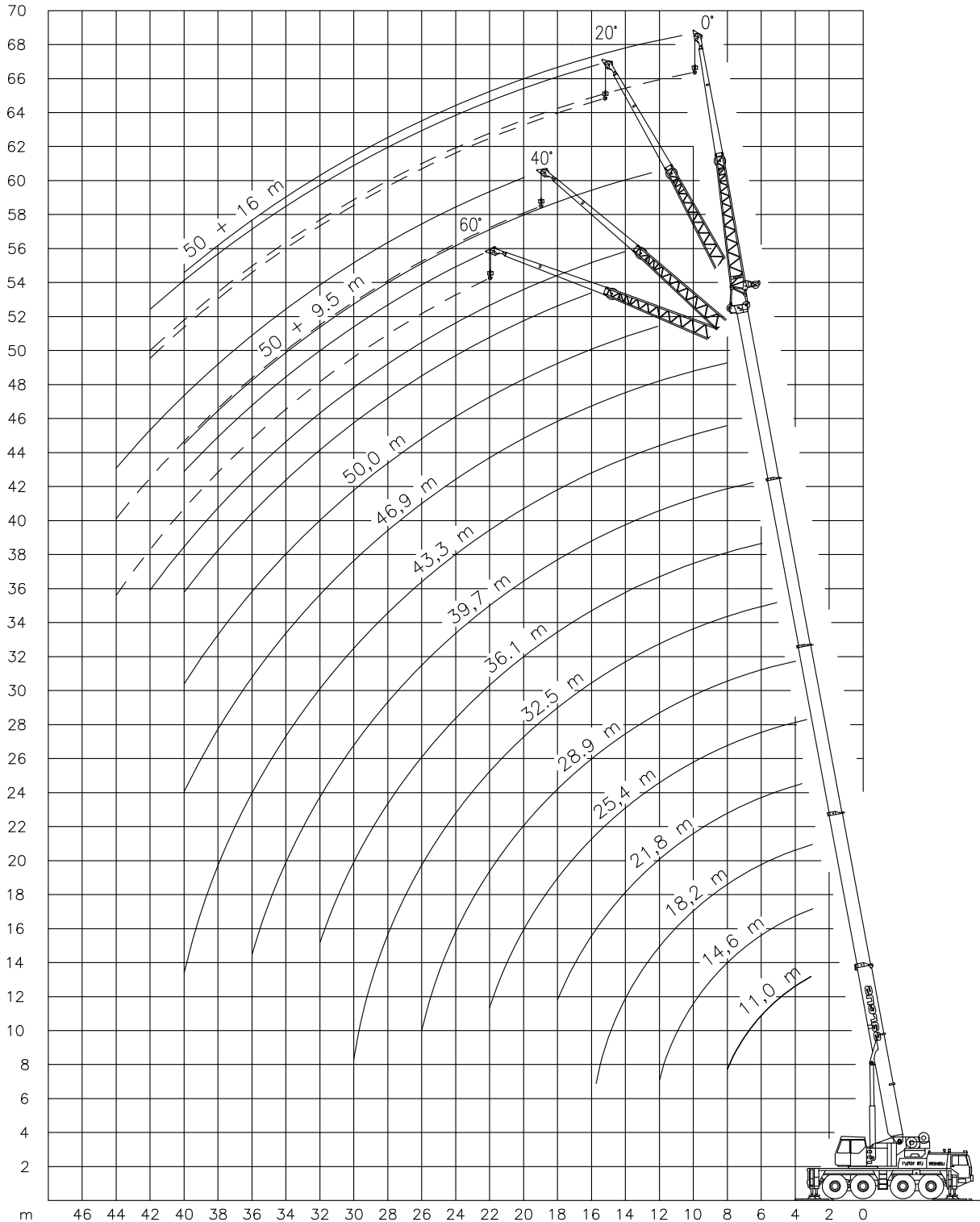
# LIEBHERR LTM 1070-4.1

## 70 TON

Working ranges  
Portées

Arbeitsbereiche  
Werkbereich

### T/TK



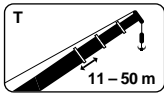


# LIEBHERR LTM 1070-4.1

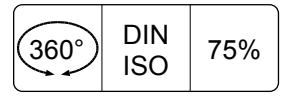
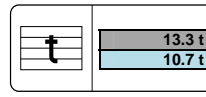
# 70 TON

Lifting capacities at main boom (excl.hook block etc.)  
Capacités à la flèche principale

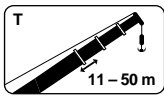
Tragfähigkeiten am Hauptausleger  
Capaciteiten aan de hoofdgiëk



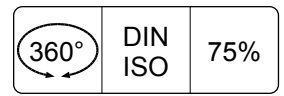
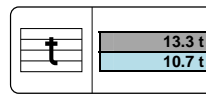
T



t	11.0m	14.6m	18.2m	21.8m	25.4m	28.9m	32.5m	36.1m	39.7m	43.3m	46.9m	50.0m	t
	t	t	t	t	t	t	t	t	t	t	t	t	
3	51.0	51.0	51.0	-	-	-	-	-	-	-	-	-	3
3.5	46.5	46.0	46.5	40.0	33.0	-	-	-	-	-	-	-	3.5
4	42.5	42.0	42.5	39.0	32.5	26.3	-	-	-	-	-	-	4
4.5	39.0	38.5	39.0	38.0	31.5	25.7	20.7	-	-	-	-	-	4.5
5	35.5	35.5	36.0	35.5	31.0	25.2	20.4	16.9	-	-	-	-	5
6	30.5	30.5	31.0	30.5	28.9	24.3	19.8	16.6	-	-	-	-	6
7	26.0	26.5	26.6	26.4	26.3	23.3	19.1	16.2	13.1	10.2	-	-	7
8	22.4	22.8	22.9	23.3	22.1	20.6	17.8	15.8	12.9	10.1	8.0	-	8
9	-	20.0	19.9	20.2	19.0	17.7	16.6	15.0	12.6	9.8	7.8	6.6	9
10	-	17.4	17.7	17.5	16.5	15.6	15.1	14.1	12.1	9.6	7.7	6.6	10
12	-	12.9	13.3	13.4	13.2	12.7	12.0	11.6	10.8	9.0	7.4	6.4	12
14	-	-	10.4	10.6	10.5	10.5	9.9	9.4	8.8	8.3	6.9	6.1	14
16	-	-	-	8.5	8.7	8.5	8.2	7.9	7.7	7.1	6.5	5.7	16
18	-	-	-	7.1	7.2	7.0	7.1	6.9	6.5	6.1	6.0	5.4	18
20	-	-	-	-	6.1	6.0	6.1	5.9	5.5	5.5	5.0	4.9	20
22	-	-	-	-	5.2	5.2	5.1	5.1	4.9	4.6	4.3	4.2	22
24	-	-	-	-	-	4.6	4.4	4.4	4.2	3.9	3.6	3.6	24
26	-	-	-	-	-	4.0	3.9	3.88	3.6	3.4	3.1	3.0	26
28	-	-	-	-	-	-	3.4	3.3	3.1	2.9	2.6	2.6	28
30	-	-	-	-	-	-	3.0	2.9	2.7	2.5	2.2	2.2	30
32	-	-	-	-	-	-	-	2.5	2.3	2.2	1.9	1.9	32
34	-	-	-	-	-	-	-	-	2.0	1.8	1.6	1.6	34
36	-	-	-	-	-	-	-	-	1.7	1.5	1.3	1.3	36
38	-	-	-	-	-	-	-	-	-	1.3	1.0	1.0	38
40	-	-	-	-	-	-	-	-	-	1.1	0.8	0.8	40



T



t	11.0m	14.6m	18.2m	21.8m	25.4m	28.9m	32.5m	36.1m	39.7m	43.3m	46.9m	50.0m	t
	t	t	t	t	t	t	t	t	t	t	t	t	
3	44.0	44.0	44.0	-	-	-	-	-	-	-	-	-	3
3.5	39.5	39.5	39.5	38.5	33.0	-	-	-	-	-	-	-	3.5
4	35.5	36.0	35.5	34.5	32.0	26.3	-	-	-	-	-	-	4
4.5	32.5	33.0	32.5	30.5	28.1	25.7	20.7	-	-	-	-	-	4.5
5	29.7	30.0	29.1	27.0	25.0	23.1	20.4	16.9	-	-	-	-	5
6	25.2	24.3	23.3	21.8	20.5	18.8	18.0	16.6	-	-	-	-	6
7	19.7	19.8	19.1	18.2	17.2	16.4	15.3	14.5	13.1	10.2	-	-	7
8	15.6	16.5	16.1	15.5	15.0	14.1	13.5	12.5	11.7	10.1	8.0	-	8
9	-	13.6	13.8	13.4	13.0	12.4	11.8	11.2	10.6	9.8	7.8	6.6	9
10	-	11.5	11.9	11.7	11.4	10.9	10.6	9.9	9.3	8.6	7.7	6.6	10
12	-	8.5	8.9	9.3	9.0	8.9	8.4	8.1	7.7	7.2	6.7	6.4	12
14	-	-	7.0	7.3	7.3	7.2	6.9	6.6	6.2	5.9	5.4	5.2	14
16	-	-	-	5.9	5.9	6.0	5.7	5.5	5.1	4.8	4.4	4.3	16
18	-	-	-	4.9	4.9	4.8	4.8	4.6	4.3	4.0	3.5	3.5	18
20	-	-	-	-	4.1	4.1	4.0	3.8	3.6	3.3	2.9	2.8	20
22	-	-	-	-	3.4	3.4	3.3	3.2	3.0	2.7	2.3	2.3	22
24	-	-	-	-	-	2.9	2.8	2.7	2.5	2.2	1.9	1.8	24
26	-	-	-	-	-	2.5	2.4	2.3	2.1	1.8	1.5	1.4	26
28	-	-	-	-	-	-	2.0	1.9	1.8	1.5	1.2	1.1	28
30	-	-	-	-	-	-	1.7	1.6	1.4	1.2	0.9	0.8	30
32	-	-	-	-	-	-	-	1.3	1.1	0.9	-	-	32
34	-	-	-	-	-	-	-	-	0.9	-	-	-	34

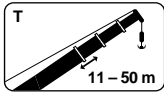


# LIEBHERR LTM 1070-4.1

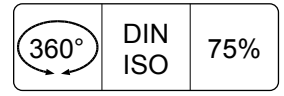
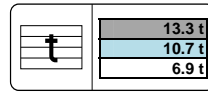
# 70 TON

Lifting capacities at main boom (excl.hook block etc.)  
Capacités à la flèche principale

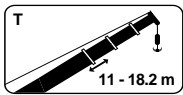
Tragfähigkeiten am Hauptausleger  
Capaciteiten aan de hoofdgiëk



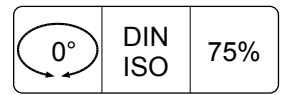
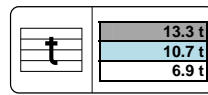
T



	11.0m	14.6m	18.2m	21.8m	25.4m	28.9m	32.5m	36.1m	39.7m	43.3m	46.9m	50.0m	
	t	t	t	t	t	t	t	t	t	t	t	t	
3	19.8	18.7	16.7	-	-	-	-	-	-	-	-	-	3
3.5	16.9	18.1	14.9	14.1	-	-	-	-	-	-	-	-	3.5
4	17.2	15.4	14.6	12.3	11.5	10.8	-	-	-	-	-	-	4
4.5	14.8	14.6	13.4	11.9	10.2	9.6	9.0	-	-	-	-	-	4.5
5	12.9	12.9	12.4	10.9	9.5	8.6	8.1	7.5	-	-	-	-	5
6	11.8	11.5	10.4	9.6	9.0	7.9	7.0	6.2	-	-	-	-	6
7	9.6	9.7	9.6	9.1	7.9	7.5	7.1	6.4	5.8	4.3	-	-	7
8	7.7	8.1	8.1	8.0	7.7	7.2	6.5	6.1	5.4	4.8	4.3	-	8
9	-	6.9	6.9	6.9	6.7	6.5	6.1	5.8	5.4	5.0	4.5	3.5	9
10	-	5.9	5.9	6.0	5.8	5.6	5.3	5.0	4.7	4.3	3.8	3.7	10
12	-	4.2	4.5	4.6	4.5	4.4	4.1	3.9	3.6	3.2	2.8	2.7	12
14	-	-	3.4	3.6	3.5	3.4	3.2	3.0	2.7	2.4	2.0	2.0	14
16	-	-	-	2.9	2.8	2.7	2.5	2.3	2.1	1.8	1.4	1.4	16
18	-	-	-	2.2	2.2	2.1	2.0	1.8	1.5	1.3	-	-	18
20	-	-	-	-	1.7	1.7	1.5	1.3	1.1	-	-	-	20
22	-	-	-	-	1.3	1.3	1.1	1.0	-	-	-	-	22
24	-	-	-	-	-	1.0	-	-	-	-	-	-	24
26	-	-	-	-	-	0.8	-	-	-	-	-	-	26

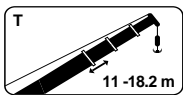


T

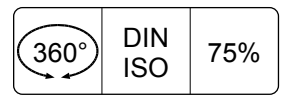
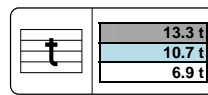


	11.0m		14.6m		18.2m		
	○	●	○	●	○	●	
3	13.7	8.2	14.4	8.8	14.7	9.1	3
3.5	12.2	7.1	12.8	7.7	13.1	8.0	3.5
4	10.8	6.2	11.5	6.8	11.8	7.1	4
4.5	9.7	5.4	10.4	6.1	10.7	6.4	4.5
5	8.7	4.7	9.4	5.4	9.7	5.7	5
6	7.1	3.6	7.8	4.3	8.1	4.6	6
7	5.9	2.8	6.6	3.4	6.9	3.7	7
8	4.9	-	5.6	2.7	5.9	3.1	8
9	-	-	4.7	2.1	5.1	2.5	9
10	-	-	4.0	-	4.4	2.0	10
12	-	-	2.9	-	3.3	-	12
14	-	-	-	-	2.4	-	14

○ = banden 16.00 R 25, 20.5 R 25  
● = banden 14.00 R 25



T



	11.0m		14.6m		18.2m		
	○	●	○	●	○	●	
3	-	6.6	-	6.4	-	-	3
3.5	-	5.4	-	6.1	-	5.5	3.5
4	8.4	4.5	8.2	5.1	-	5.4	4
4.5	7.2	3.8	7.7	4.4	7.2	4.7	4.5
5	6.4	-	7.0	3.8	6.9	4.1	5
6	5.2	-	5.5	2.8	5.9	3.1	6
7	4.1	-	4.8	-	4.7	-	7
8	3.3	-	3.9	-	4.2	-	8
9	-	-	3.2	-	3.5	-	9
10	-	-	2.6	-	2.9	-	10
12	-	-	1.8	-	2.1	-	12
14	-	-	-	-	1.4	-	14

○ = banden 16.00 R 25  
● = banden 14.00 R 25

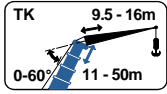


# LIEBHERR LTM 1070-4.1

# 70 TON

Lifting capacities at folding jib (excl.hook block etc.)  
Capacités à la fléchette pliante

Tragfähigkeiten am wippbarer Klappspitze  
Capaciteiten aan de klapjib



TK



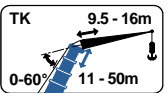
13.3 t
10.7 t
6.9 t



DIN ISO

75%

	↙ 11.0m								↙ 14.6m								↙ 18.2m								
	9.5m				16.0m				9.5m				16.0m				9.5m				16.0m				
	0°	20°	40°	60°	0°	20°	40°	60°	0°	20°	40°	60°	0°	20°	40°	60°	0°	20°	40°	60°	0°	20°	40°	60°	
	t	t	t	t	t	t	t	t	t	t	t	t	t	t	t	t	t	t	t	t	t	t	t	t	
3	11.4	-	-	-	7.9	-	-	-	11.4	-	-	-	8.0	-	-	-	11.4	-	-	-	7.8	-	-	-	3
3.5	11.4	-	-	-	7.6	-	-	-	11.4	-	-	-	7.8	-	-	-	11.4	-	-	-	7.7	-	-	-	3.5
4	11.4	9.6	-	-	7.4	-	-	-	11.4	-	-	-	7.6	-	-	-	11.4	-	-	-	7.5	-	-	-	4
4.5	11.4	9.2	-	-	7.0	-	-	-	11.4	9.6	-	-	7.3	-	-	-	11.4	-	-	-	7.3	-	-	-	4.5
5	11.4	8.9	-	-	6.7	-	-	-	11.4	9.2	-	-	7.1	-	-	-	11.4	9.4	-	-	7.1	-	-	-	5
6	11.4	8.2	-	-	6.1	-	-	-	11.4	8.6	-	-	6.6	-	-	-	11.4	8.8	-	-	6.7	-	-	-	6
7	11.4	7.7	6.2	-	5.7	3.9	-	-	11.4	8.1	6.3	-	6.0	-	-	-	11.4	8.3	-	-	6.3	-	-	-	7
8	10.6	7.2	6.0	4.8	5.3	3.7	-	-	11.4	7.6	6.1	-	5.7	3.8	-	-	11.4	7.9	6.2	-	5.9	3.9	-	-	8
9	9.6	6.8	5.8	4.7	4.8	3.5	-	-	11.0	7.3	5.9	4.7	5.3	3.6	-	-	11.4	7.5	6.0	4.8	5.5	3.7	-	-	9
10	8.7	6.4	5.6	4.5	4.5	3.3	-	-	10.2	6.9	5.7	4.6	4.9	3.4	-	-	11.1	7.2	5.8	4.7	5.2	3.5	-	-	10
12	7.2	5.9	5.1	4.4	3.8	3.0	2.5	-	8.7	6.3	5.3	4.5	4.3	3.1	2.6	-	9.8	6.6	5.5	4.5	4.5	3.2	2.6	-	12
14	5.9	5.4	4.8	4.4	3.4	2.7	2.4	2.3	7.3	5.9	5.0	4.4	3.7	2.9	2.4	-	8.5	6.2	5.2	4.4	4.1	3.0	2.5	-	14
16	5.1	5.0	4.7	4.4	3.1	2.5	2.2	2.2	6.3	5.5	4.8	4.4	3.4	2.7	2.3	2.2	7.3	5.8	5.0	4.4	3.6	2.8	2.3	2.2	16
18	4.3	4.8	-	-	2.8	2.4	2.2	2.1	5.5	5.1	4.7	4.4	3.1	2.5	2.2	2.1	6.5	5.5	4.8	4.4	3.3	2.6	2.3	2.2	18
20	-	-	-	-	2.5	2.2	2.1	2.1	4.8	4.9	4.7	-	2.8	2.4	2.1	2.1	5.6	5.2	4.7	4.4	3.1	2.5	2.2	2.1	20
22	-	-	-	-	2.3	2.1	2.1	-	-	-	-	-	2.6	2.2	2.1	2.1	4.8	4.9	4.7	4.4	2.8	2.3	2.1	2.1	22
24	-	-	-	-	2.1	2.1	-	-	-	-	-	-	2.4	2.1	2.1	2.1	4.1	4.2	4.2	-	2.6	2.2	2.1	2.1	24
26	-	-	-	-	-	-	-	-	-	-	-	-	2.2	2.1	2.1	-	-	-	-	-	2.4	2.2	2.1	2.1	26
28	-	-	-	-	-	-	-	-	-	-	-	-	2.1	-	-	-	-	-	-	-	2.3	2.1	2.1	-	28
30	-	-	-	-	-	-	-	-	-	-	-	-	-	-	-	-	-	-	-	-	2.1	2.1	2.1	-	30



TK



13.3 t
10.7 t
6.9 t



DIN ISO

75%

	↙ 21.8m								↙ 25.4m								↙ 28.9m								
	9.5m				16.0m				9.5m				16.0m				9.5m				16.0m				
	0°	20°	40°	60°	0°	20°	40°	60°	0°	20°	40°	60°	0°	20°	40°	60°	0°	20°	40°	60°	0°	20°	40°	60°	
	t	t	t	t	t	t	t	t	t	t	t	t	t	t	t	t	t	t	t	t	t	t	t	t	
3	11.4	-	-	-	-	-	-	-	11.4	-	-	-	-	-	-	-	11.4	-	-	-	-	-	-	-	3
3.5	11.4	-	-	-	7.2	-	-	-	11.4	-	-	-	-	-	-	-	11.4	-	-	-	-	-	-	-	3.5
4	11.4	-	-	-	7.1	-	-	-	11.4	-	-	-	6.8	-	-	-	11.4	-	-	-	-	-	-	-	4
4.5	11.4	-	-	-	7.0	-	-	-	11.4	-	-	-	6.8	-	-	-	11.4	-	-	-	6.2	-	-	-	4.5
5	11.4	-	-	-	6.9	-	-	-	11.4	-	-	-	6.7	-	-	-	11.4	-	-	-	6.1	-	-	-	5
6	11.4	8.8	-	-	6.6	-	-	-	11.4	8.8	-	-	6.5	-	-	-	11.4	-	-	-	6.0	-	-	-	6
7	11.4	8.4	-	-	6.2	-	-	-	11.4	8.4	-	-	6.2	-	-	-	11.4	8.2	-	-	5.8	-	-	-	7
8	11.4	8.0	6.1	-	5.9	-	-	-	11.4	8.0	-	-	5.9	-	-	-	11.4	7.8	-	-	5.6	-	-	-	8
9	11.4	7.6	6.0	-	5.6	3.7	-	-	11.4	7.7	6.0	-	5.7	3.7	-	-	11.1	7.5	5.9	-	5.4	-	-	-	9
10	11.3	7.3	5.9	4.7	5.3	3.5	-	-	11.4	7.4	5.9	4.7	5.4	3.6	-	-	10.7	7.3	5.8	-	5.2	3.5	-	-	10
12	10.1	6.8	5.6	4.5	4.7	3.3	-	-	10.4	6.9	5.6	4.6	4.9	3.3	-	-	9.9	6.8	5.5	4.6	4.7	3.3	-	-	12
14	9.2	6.3	5.3	4.4	4.2	3.0	2.5	-	9.1	6.5	5.3	4.5	4.4	3.1	2.5	-	9.1	6.5	5.3	4.5	4.3	3.1	2.5	-	14
16	8.1	6.0	5.1	4.4	3.8	2.9	2.4	2.2	7.4	6.1	5.1	4.4	4.0	2.9	2.4	2.2	7.5	6.1	5.1	4.4	4.0	2.9	2.4	-	16
18	6.7	5.7	4.9	4.4	3.5	2.7	2.3	2.2	6.2	5.9	5.0	4.4	3.7	2.8	2.3	2.2	6.3	5.9	5.0	4.4	3.7	2.8	2.3	2.2	18
20	5.6	5.4	4.8	4.4	3.2	2.5	2.2	2.1	5.1	5.5	4.9	4.4	3.4	2.6	2.2	2.1	5.3	5.7	4.9	4.4	3.5	2.6	2.2	2.1	20
22	4.7	4.9	4.7	4.4	3.0	2.4	2.1	2.1	4.3	4.6	4.8	4.4	3.2	2.5	2.2	2.1	4.5	4.8	4.8	4.4	3.2	2.5	2.2	2.1	22
24	3.9	4.1	4.3	4.2	2.8	2.3	2.1	2.1	3.6	3.8	4.0	4.1	3.0	2.4	2.1	2.1	3.8	4.1	4.3	4.3	3.1	2.4	2.1	2.1	24
26	3.3	3.4	3.5	-	2.6	2.2	2.1	2.1	2.9	3.2	3.3	3.3	2.8	2.3	2.1	2.1	3.2	3.4	3.6	3.6	2.9	2.3	2.1	2.1	26
28	2.8	2.9	-	-	2.4	2.2	2.1	2.1	2.4	2.6	2.7	2.6	2.6	2.2	2.1	2.1	2.7	2.9	3.0	3.0	2.7	2.3	2.1	2.1	28
30	-	-	-	-	2.3	2.1	2.1	2.1	2.0	2.1	2.1	-	2.4	2.2	2.0	2.1	2.2	2.4	2.5	2.4	2.6	2.2	2.0	2.1	30
32	-	-	-	-	2.2	2.1	2.1	-	1.6	1.7	-	-	2.0	2.1	2.0	2.1	1.8	2.0	2.0	-	2.2	2.1	2.0	2.1	32
34	-	-	-	-	2.0	2.1	-	-	-	-	-	-	1.7	1.9	2.0	1.8	1.5	1.6	1.6	-	1.8	2.1	2.0	2.1	34
36	-	-	-	-	-	-	-	-	-	-	-	-	1.4	1.5	1.6	-	1.3	-	-	-	1.5	1.7	1.9	1.8	36
38	-	-	-	-	-	-	-	-	-	-	-	-	1.1	1.2	-	-	-	-	-	-	1.3	1.4	1.5	-	38
40	-	-	-	-	-	-	-	-	-	-	-	-	-	-	-	-	-	-	-	-	1.1	1.2	1.1	-	40
42	-	-	-	-	-	-	-	-	-	-	-	-	-	-	-	-	-	-	-	-	0.9	0.9	-	-	42

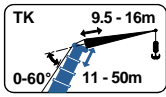


# LIEBHERR LTM 1070-4.1

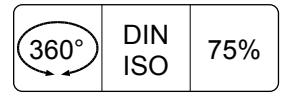
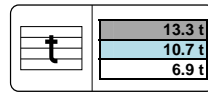
# 70 TON

Lifting capacities at folding jib (excl.hook block etc)  
Capacités à la fléchette pliante

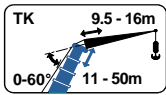
Tragfähigkeiten am wippbarer Klappspitze  
Capaciteiten aan de klapjib



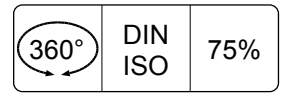
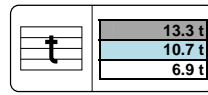
TK



	↕ 32.5m								↕ 36.1m								↕ 39.7m								
	9.5m				16.0m				9.5m				16.0m				9.5m				16.0m				
	0°	20°	40°	60°	0°	20°	40°	60°	0°	20°	40°	60°	0°	20°	40°	60°	0°	20°	40°	60°	0°	20°	40°	60°	
	t	t	t	t	t	t	t	t	t	t	t	t	t	t	t	t	t	t	t	t	t	t	t	t	
4.5	11.2	-	-	-	5.7	-	-	-	8.1	-	-	-	-	-	-	-	6.9	-	-	-	4.1	-	-	-	4.5
5	11.1	-	-	-	-	-	-	-	-	-	-	-	-	-	-	-	-	-	-	-	-	-	-	-	5
6	10.9	-	-	-	5.5	-	-	-	7.9	-	-	-	4.5	-	-	-	6.9	-	-	-	-	-	-	-	6
7	10.7	-	-	-	5.3	-	-	-	7.7	-	-	-	4.4	-	-	-	6.7	-	-	-	-	-	-	-	7
8	10.4	7.6	-	-	5.2	-	-	-	7.5	-	-	-	4.4	-	-	-	6.6	-	-	-	4.1	-	-	-	8
9	10.1	7.4	-	-	5.0	-	-	-	7.3	6.5	-	-	4.3	-	-	-	6.5	-	-	-	4.0	-	-	-	9
10	9.9	7.1	5.8	-	4.9	-	-	-	7.2	6.4	-	-	4.3	-	-	-	6.4	5.6	-	-	3.9	-	-	-	10
12	9.4	6.7	5.4	4.6	4.5	3.3	-	-	6.9	6.2	5.3	-	4.1	3.1	-	-	6.2	5.5	5.1	-	3.8	-	-	-	12
14	8.4	6.4	5.3	4.5	4.2	3.1	-	-	6.6	5.9	5.1	4.4	3.9	3.0	-	-	6.0	5.4	5.0	4.4	3.7	2.9	-	-	14
16	6.9	6.1	5.1	4.4	4.0	2.9	2.4	-	6.1	5.5	4.9	4.4	3.8	2.8	2.3	-	5.7	5.1	4.8	4.4	3.6	2.8	-	-	16
18	5.7	5.9	5.0	4.4	3.7	2.8	2.3	2.1	5.7	5.1	4.6	4.4	3.6	2.7	2.3	-	5.4	4.8	4.6	4.3	3.5	2.7	2.2	-	18
20	5.2	5.2	4.9	4.4	3.5	2.7	2.2	2.1	5.0	4.7	4.4	4.3	3.4	2.6	2.2	2.1	4.5	4.6	4.3	4.3	3.3	2.6	2.2	2.1	20
22	4.6	4.3	4.7	4.4	3.3	2.6	2.2	2.1	4.2	4.4	4.2	4.2	3.3	2.5	2.2	2.1	3.7	4.1	4.2	4.2	3.2	2.5	2.1	2.1	22
24	3.9	4.0	4.0	4.1	3.1	2.5	2.1	2.1	3.6	3.9	4.0	4.0	3.1	2.4	2.1	2.1	3.2	3.5	3.8	4.0	3.1	2.4	2.1	2.0	24
26	3.4	3.6	3.8	3.8	3.0	2.4	2.1	2.1	3.0	3.3	3.5	3.3	3.0	2.3	2.1	2.1	3.0	2.9	3.2	3.3	2.8	2.3	2.1	2.0	26
28	2.9	3.1	3.2	3.3	2.8	2.3	2.1	2.1	2.6	2.8	3.0	2.8	2.8	2.3	2.0	2.1	2.8	2.7	2.7	2.8	2.4	2.3	2.0	2.0	28
30	2.4	2.6	2.7	2.7	2.7	2.2	2.0	2.1	2.2	2.4	2.5	2.6	2.4	2.2	2.0	2.1	2.4	2.6	2.6	2.6	2.3	2.2	2.0	2.0	30
32	2.0	2.2	2.3	2.2	2.3	2.1	2.0	2.1	1.8	2.0	2.1	2.1	2.0	2.2	2.0	2.1	2.0	2.2	2.3	2.4	2.1	2.1	2.0	2.0	32
34	1.7	1.8	1.9	1.8	2.0	2.1	2.0	2.1	1.5	1.6	1.7	1.7	1.7	2.0	2.0	2.1	1.7	1.9	2.0	2.0	1.8	2.0	2.0	2.0	34
36	1.4	1.5	1.5	-	1.7	1.9	2.0	2.1	1.2	1.3	1.4	1.3	1.5	1.7	1.9	2.0	1.4	1.5	1.6	1.6	1.5	1.8	1.9	2.0	36
38	1.2	1.2	-	-	1.4	1.6	1.7	1.7	0.9	1.0	1.1	-	1.2	1.4	1.6	1.6	1.1	1.3	1.3	1.3	1.3	1.6	1.7	1.8	38
40	-	-	-	-	1.2	1.3	1.4	1.3	0.7	0.8	0.8	-	1.0	1.2	1.3	1.3	0.9	1.0	1.0	1.0	1.1	1.3	1.5	1.5	40
42	-	-	-	-	1.0	1.1	1.1	-	-	-	-	-	0.7	0.9	1.0	0.9	0.7	0.8	0.8	-	0.9	1.1	1.2	1.2	42
44	-	-	-	-	0.8	0.9	-	-	-	-	-	-	0.6	0.7	0.8	-	-	0.6	-	-	0.7	0.9	0.9	0.9	44
46	-	-	-	-	0.6	-	-	-	-	-	-	-	-	-	-	-	-	-	-	-	-	0.7	0.7	0.6	46
48	-	-	-	-	-	-	-	-	-	-	-	-	-	-	-	-	-	-	-	-	-	-	-	-	48

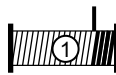


TK



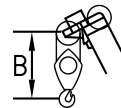
	↕ 43.3m								↕ 46.9m								↕ 50.0m								
	9.5m				16.0m				9.5m				16.0m				9.5m				16.0m				
	0°	20°	40°	60°	0°	20°	40°	60°	0°	20°	40°	60°	0°	20°	40°	60°	0°	20°	40°	60°	0°	20°	40°	60°	
	t	t	t	t	t	t	t	t	t	t	t	t	t	t	t	t	t	t	t	t	t	t	t	t	
7	4.8	-	-	-	-	-	-	-	4.3	-	-	-	-	-	-	-	3.6	-	-	-	-	-	-	-	7
8	4.8	-	-	-	3.3	-	-	-	4.3	-	-	-	-	-	-	-	3.6	-	-	-	-	-	-	-	8
9	4.8	-	-	-	3.2	-	-	-	4.3	-	-	-	2.9	-	-	-	3.6	-	-	-	2.5	-	-	-	9
10	4.7	-	-	-	3.1	-	-	-	4.2	-	-	-	2.8	-	-	-	3.6	-	-	-	2.5	-	-	-	10
12	4.5	4.1	-	-	3.0	-	-	-	4.1	3.7	-	-	2.7	-	-	-	3.5	3.2	-	-	2.4	-	-	-	12
14	4.3	4.1	4.0	-	2.9	2.6	-	-	3.9	3.7	3.5	-	2.6	-	-	-	3.4	3.1	-	-	2.3	-	-	-	14
16	4.1	4.0	3.9	3.9	2.8	2.6	-	-	3.8	3.6	3.5	3.8	2.6	2.4	-	-	3.3	3.1	3.1	-	2.2	2.1	-	-	16
18	3.9	3.8	3.7	3.7	2.7	2.5	2.2	-	3.7	3.5	3.5	3.6	2.5	2.3	-	-	3.2	3.1	3.1	3.2	2.2	2.0	-	-	18
20	3.7	3.5	3.5	3.5	2.7	2.4	2.1	2.0	3.6	3.4	3.4	3.4	2.5	2.3	2.1	-	3.1	3.0	3.0	3.1	2.1	2.0	-	-	20
22	3.4	3.3	3.3	3.3	2.6	2.4	2.1	2.0	3.4	3.3	3.2	3.3	2.4	2.3	2.1	2.0	3.0	2.9	2.9	3.0	2.1	2.0	-	-	22
24	3.2	3.1	3.1	3.1	2.6	2.3	2.1	2.0	3.0	3.1	3.1	3.1	2.4	2.3	2.0	2.0	2.8	2.8	2.8	2.8	2.1	2.0	-	-	24
26	2.9	2.9	2.9	3.0	2.6	2.3	2.0	2.0	2.5	2.9	2.9	3.0	2.3	2.2	2.0	2.0	2.4	2.7	2.6	2.7	2.0	2.0	-	-	26
28	2.5	2.7	2.8	2.8	2.4	2.2	2.0	2.0	2.1	2.4	2.6	2.8	2.2	2.2	2.0	2.0	2.0	2.3	2.5	2.6	2.0	2.0	-	-	28
30	2.1	2.3	2.5	2.6	2.2	2.1	2.0	2.0	1.7	2.0	2.2	2.3	1.8	2.1	2.0	2.0	1.6	1.9	2.1	2.2	1.7	1.9	-	-	30
32	1.7	1.9	2.1	2.2	1.8	2.1	2.0	2.0	1.4	1.6	1.8	1.9	1.5	1.9	2.0	2.0	1.3	1.5	1.7	1.8	1.4	1.8	-	-	32
34	1.4	1.6	1.8	1.8	1.5	1.9	1.9	2.0	1.1	1.3	1.5	1.5	1.2	1.6	1.9	2.0	1.0	1.2	1.4	1.5	1.1	1.5	-	-	34
36	1.2	1.3	1.4	1.5	1.3	1.6	1.8	2.0	0.8	1.0	1.1	1.2	0.9	1.3	1.6	1.7	0.7	0.9	1.1	1.1	0.9	1.2	-	-	36
38	0.9	1.1	1.2	1.2	1.0	1.3	1.5	1.6	0.6	0.8	0.9	0.9	0.7	1.0	1.3	1.4	-	0.7	0.8	0.9	0.6	1.0	-	-	38
40	0.7	0.8	0.9	0.9	0.8	1.1	1.3	1.3	-	-	0.6	0.6	-	0.8	1.0	1.1	-	-	0.6	0.6	-	0.7	-	-	40
42	-	0.6	0.7	0.6	0.6	0.9	1.0	1.1	-	-	-	-	-	0.6	0.8	0.8	-	-	-	-	-	-	-	-	42
44	-	-	-	-	-	0.7	0.8	0.8	-	-	-	-	-	-	-	-	-	-	-	-	-	-	-	-	44
46	-	-	-	-	-	-	-	-	-	-	-	-	-	-	-	-	-	-	-	-	-	-	-	-	46

Hook block/Crane hook



57 kN Ø 17mm

Crochet-mouflé/Crochet simple



Unterflasche/Hakengehänge

Kraanblok/Kraanhaak

Capacity / Capacité / Tragfähigkeit / Capaciteit	Number of sheaves / Nombre de poulies / Anzahl der Rollen / Aantal schijven	Number of lines / Nombre de brins / Strangzahl / Aantal parten	Weight / Poids / Gewicht / Gewicht	"B"
SWL 38.3 t	3	7	450 kg	1.8 m
SWL 5.7 t	-	1	110 kg	0.8 m