

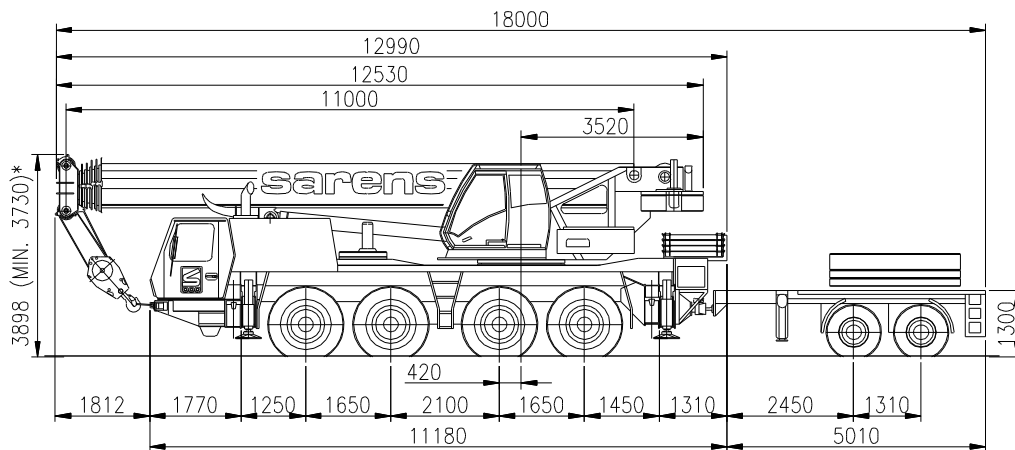


sarens
group

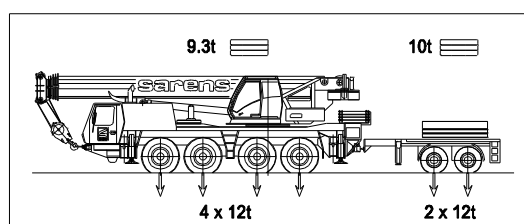
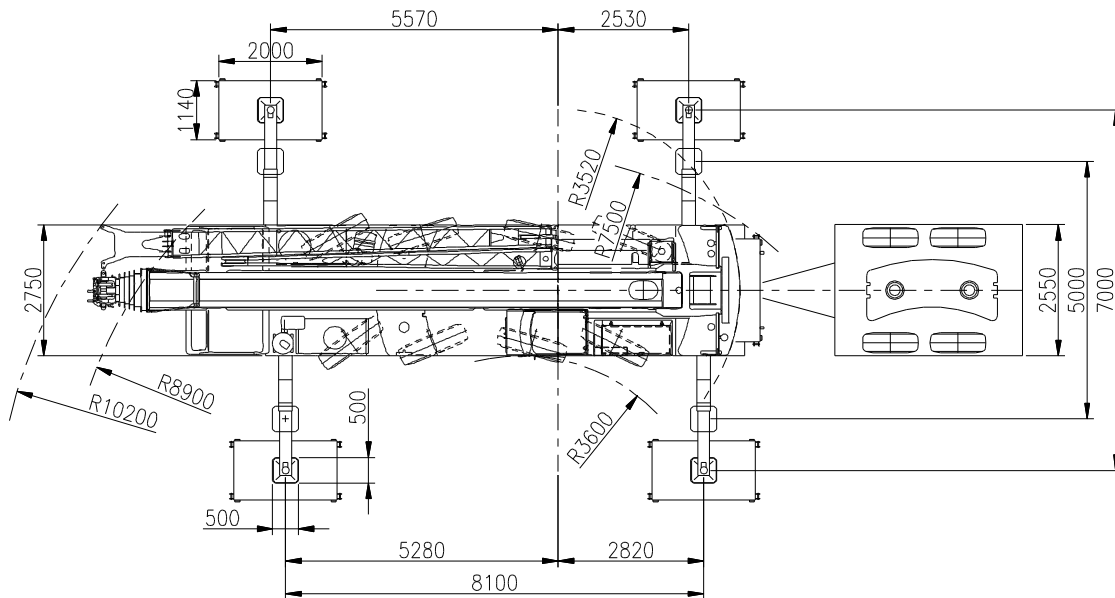
www.sarens.com

GROVE GMK 4080-1

80 TON



* Bij vlakke ondergrond / On flat surface



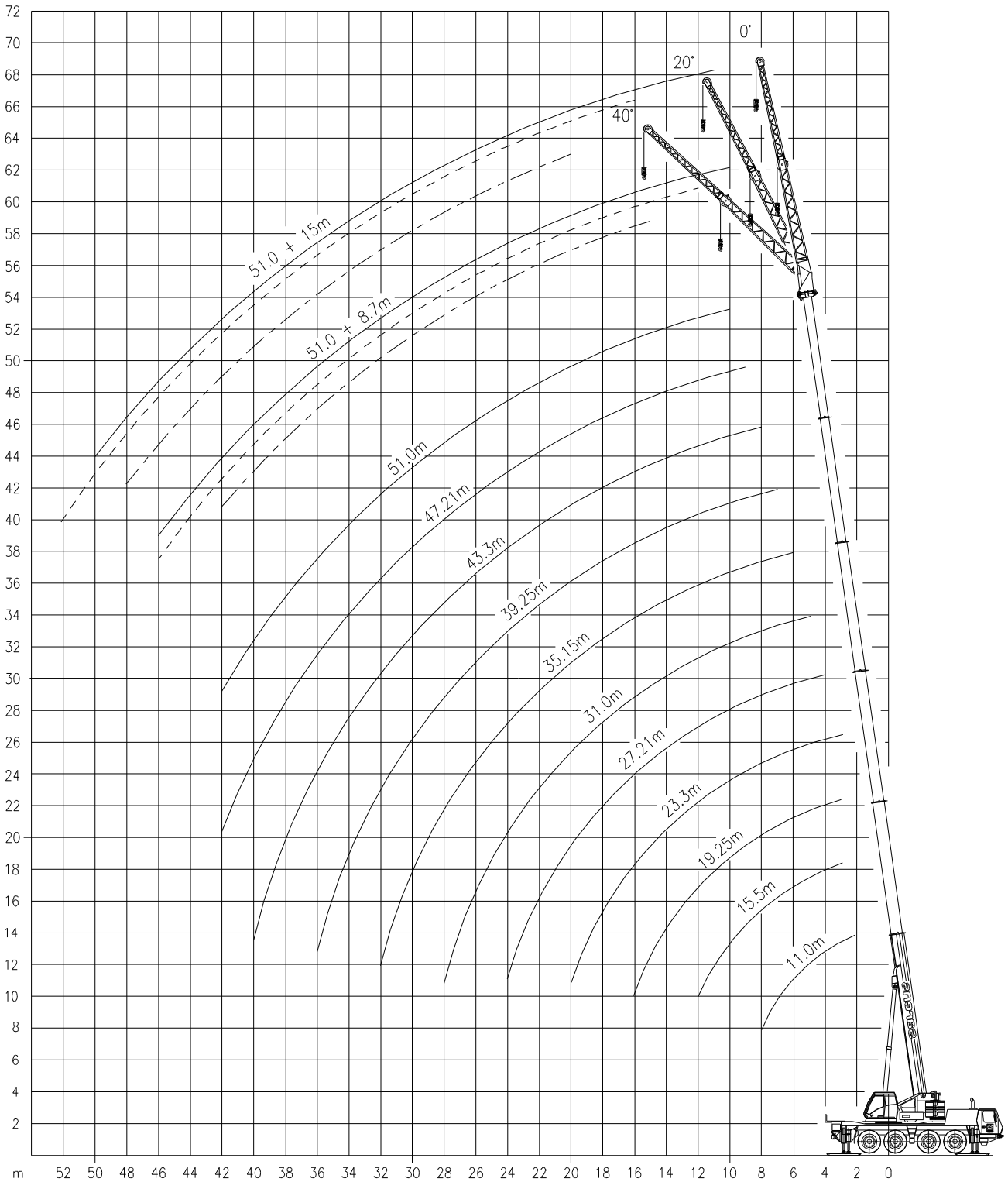


GROVE GMK 4080-1

Working ranges
Portées

80 TON

Arbeitsbereiche
Werkbereich



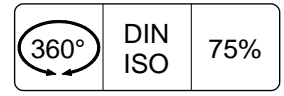
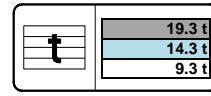
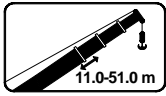


GROVE GMK 4080-1

80 TON

Lifting capacities at main boom (excl.hook block etc.)
Capacités à la flèche principale

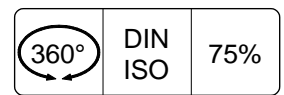
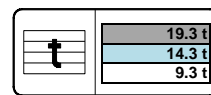
Tragfähigkeiten am Hauptausleger
Capaciteiten aan de hoofdgiel



	11.0m	15.15m	19.25m	23.3m	27.21m	31.0m	35.15m	39.25m	43.3m	47.21m	51.0m	
	t	t	t	t	t	t	t	t	t	t	t	
2.5	80.0*#	-	-	-	-	-	-	-	-	-	-	2.5
3	68.0#	57.5	53.0	49.5	-	-	-	-	-	-	-	3
4	53.5	50.5	47.0	44.0	36.5	-	-	-	-	-	-	4
5	46.0	44.5	41.5	39.0	35.0	27.5	-	-	-	-	-	5
6	40.0	39.0	38.0	35.0	33.5	26.5	20.0	-	-	-	-	6
7	34.5	34.5	34.0	32.0	31.0	25.5	19.7	15.3	-	-	-	7
8	28.5	30.0	30.0	28.5	28.0	24.5	19.3	15.3	11.5	-	-	8
9	-	25.5	25.5	25.0	24.0	23.0	18.2	15.1	11.5	8.9	-	9
10	-	22.0	22.0	22.5	21.0	20.5	17.1	14.8	11.5	8.9	7.2	10
11	-	18.8	19.2	19.1	18.8	18.4	16.0	14.0	11.5	8.9	7.2	11
12	-	16.3	16.7	16.6	17.2	16.4	15.0	13.3	11.5	8.9	7.2	12
13	-	-	14.7	14.8	15.2	14.7	13.9	12.5	11.2	8.9	7.2	13
14	-	-	13.1	13.7	13.5	13.1	12.6	11.8	10.8	8.9	7.2	14
15	-	-	11.9	12.3	12.1	11.7	11.4	11.0	10.3	8.9	7.2	15
16	-	-	11.0	11.1	11.0	10.5	10.5	10.1	9.7	8.6	7.2	16
18	-	-	-	9.2	9.1	8.8	9.1	8.3	8.4	8.0	7.2	18
20	-	-	-	7.8	7.6	8.0	7.6	7.1	7.0	7.3	6.7	20
22	-	-	-	-	6.5	6.8	6.5	6.6	6.1	6.1	6.3	22
24	-	-	-	-	5.5	5.9	5.5	5.7	5.6	5.5	5.4	24
26	-	-	-	-	-	5.1	4.8	4.9	5.0	4.9	4.6	26
28	-	-	-	-	-	3.7	4.1	4.3	4.3	4.2	4.0	28
30	-	-	-	-	-	-	3.6	3.9	3.8	3.7	3.4	30
32	-	-	-	-	-	-	3.1	3.6	3.4	3.2	2.9	32
34	-	-	-	-	-	-	-	3.2	3.0	2.8	2.5	34
36	-	-	-	-	-	-	-	1.6	2.6	2.4	2.1	36
38	-	-	-	-	-	-	-	-	2.3	2.1	1.8	38
40	-	-	-	-	-	-	-	-	1.1	1.8	1.5	40
42	-	-	-	-	-	-	-	-	-	1.5	1.3	42
44	-	-	-	-	-	-	-	-	-	-	1.0	44
46	-	-	-	-	-	-	-	-	-	-	0.8	46

* Over rear / En arrière / Nach hinten / Over achterzijde

Special attachment required / Sonderausrüstung erforderlich / Nécessite équipement spécial / Speciale uitrusting benodigd.



	11.0m	15.15m	19.25m	23.3m	27.21m	31.0m	35.15m	39.25m	43.3m	47.21m	51.0m	
	t	t	t	t	t	t	t	t	t	t	t	
3	61.5	57.5	53.0	49.5	-	-	-	-	-	-	-	3
4	51.0	50.5	47.0	44.0	36.5	-	-	-	-	-	-	4
5	43.5	43.5	39.0	34.5	32.5	27.5	-	-	-	-	-	5
6	37.0	33.5	31.0	29.0	26.5	25.5	20.0	-	-	-	-	6
7	29.0	27.5	25.0	24.5	23.5	21.5	19.7	15.3	-	-	-	7
8	23.0	23.5	22.0	21.5	20.0	18.4	17.0	15.3	11.5	-	-	8
9	-	19.5	19.0	18.7	17.5	16.0	14.8	14.0	11.5	8.9	-	9
10	-	16.3	16.9	16.4	15.4	14.1	14.0	12.3	11.5	8.9	7.2	10
11	-	13.9	14.8	14.6	13.6	12.6	12.5	10.9	10.6	8.9	7.2	11
12	-	12.3	12.9	13.0	12.2	11.9	11.2	10.3	9.5	8.9	7.2	12
13	-	-	11.3	11.5	11.0	11.0	10.1	9.7	9.1	8.5	7.2	13
14	-	-	10.0	10.2	9.9	10.0	9.2	9.0	8.7	8.2	7.2	14
15	-	-	8.9	9.1	8.9	9.1	8.3	8.2	8.1	7.6	7.0	15
16	-	-	8.0	8.1	8.0	8.4	7.6	7.6	7.5	7.0	6.4	16
18	-	-	-	6.9	6.5	6.9	6.4	6.8	6.4	5.9	5.4	18
20	-	-	-	5.9	5.3	5.7	5.6	5.8	5.4	5.0	4.5	20
22	-	-	-	-	4.4	4.8	5.0	5.0	4.7	4.3	3.8	22
24	-	-	-	-	3.7	4.2	4.3	4.2	4.0	3.7	3.2	24
26	-	-	-	-	-	3.8	3.7	3.6	3.4	3.1	2.7	26
28	-	-	-	-	-	2.2	3.2	3.1	2.9	2.7	2.2	28
30	-	-	-	-	-	-	2.7	2.6	2.5	2.3	1.8	30
32	-	-	-	-	-	-	1.8	2.3	2.1	1.9	1.5	32
34	-	-	-	-	-	-	-	1.9	1.7	1.5	1.2	34
36	-	-	-	-	-	-	-	-	1.4	1.3	0.9	36
38	-	-	-	-	-	-	-	-	1.2	1.0	-	38

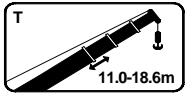


GROVE GMK 4080-1

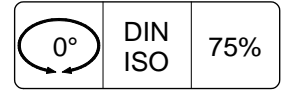
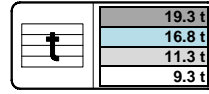
80 TON

Lifting capacities at main boom (excl.hook block etc.)
Capacités à la flèche principale

Tragfähigkeiten am Hauptausleger
Capaciteiten aan de hoofdgiel



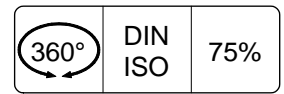
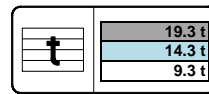
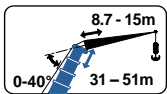
T



m	11.0m			14.8m			18.6m			m
	t	t	t	t	t	t	t	t		
3	15.7			16.4			16.8			3
4	12.8			13.5			14.0			4
5	10.6			11.3			11.7			5
6	8.8			9.5			10.0			6
7	7.4			8.2			8.6			7
8	6.1			6.9			7.3			8
9	-			5.9			6.4			9
10	-			5.1			5.6			10
11	-			4.4			4.9			11
12	-			3.8			4.3			12
13	-			-			3.8			13
14	-			-			3.4			14
15	-			-			3.0			15
16	-			-			2.6			16

Lifting capacities at folding jib (excl.hook block etc.)
Capacités à la fléchette pliante

Tragfähigkeiten am wippbarer Klappspitze
Capaciteiten aan de klappjib



m	↕ 31.0m						↕ 35.15m						↕ 39.25m						m
	8.7m			15m			8.7m			15m			8.7m			15m			
	0°	20°	40°	0°	20°	40°	0°	20°	40°	0°	20°	40°	0°	20°	40°	0°	20°	40°	
	t	t	t	t	t	t	t	t	t	t	t	t	t	t	t	t	t	t	
6	8.4	-	-	-	-	-	7.6	-	-	-	-	-	-	-	-	-	-	-	6
7	8.3	-	-	4.1	-	-	7.5	-	-	-	-	-	-	6.7	-	-	-	-	7
8	8.1	5.1	-	4.1	-	-	7.5	-	-	3.8	-	-	6.6	-	-	-	-	-	8
9	7.7	4.7	-	4.0	-	-	7.4	4.7	-	3.8	-	-	6.6	-	-	3.5	-	-	9
10	7.3	4.5	-	4.0	-	-	7.3	4.6	-	3.8	-	-	6.5	4.6	-	3.5	-	-	10
11	6.9	4.4	3.5	3.9	-	-	7.1	4.5	3.5	3.7	-	-	6.5	4.5	-	3.4	-	-	11
12	6.6	4.2	3.4	3.7	2.4	-	6.8	4.3	3.5	3.7	-	-	6.4	4.4	3.5	3.4	-	-	12
13	6.3	4.1	3.4	3.5	2.4	-	6.5	4.2	3.4	3.6	2.4	-	6.3	4.3	3.4	3.4	-	-	13
14	6.0	4.0	3.3	3.4	2.3	-	6.2	4.1	3.4	3.5	2.3	-	6.2	4.1	3.4	3.4	2.3	-	14
15	5.7	3.9	3.3	3.2	2.2	-	6.0	4.0	3.3	3.3	2.3	-	6.1	4.1	3.3	3.3	2.3	-	15
16	5.5	3.8	3.2	3.1	2.2	1.7	5.7	3.9	3.3	3.2	2.2	1.8	5.8	4.0	3.3	3.2	2.2	-	16
18	4.8	3.6	3.2	2.8	2.1	1.7	5.3	3.7	3.2	3.0	2.1	1.7	5.5	3.8	3.2	3.0	2.1	1.7	18
20	4.4	3.5	3.1	2.6	2.0	1.6	4.7	3.6	3.1	2.8	2.0	1.7	5.1	3.7	3.2	2.8	2.0	1.7	20
22	4.2	3.4	3.0	2.5	1.9	1.6	4.4	3.5	3.1	2.6	1.9	1.6	4.7	3.5	3.1	2.7	1.9	1.6	22
24	3.9	3.3	3.0	2.3	1.8	1.6	4.1	3.3	3.0	2.4	1.8	1.6	4.3	3.4	3.1	2.5	1.9	1.6	24
26	3.7	3.2	3.0	2.1	1.7	1.5	3.9	3.3	3.0	2.3	1.8	1.5	4.1	3.3	3.0	2.4	1.8	1.6	26
28	3.5	3.1	3.0	2.0	1.7	1.5	3.7	3.2	3.0	2.1	1.7	1.5	3.7	3.2	3.0	2.2	1.7	1.5	28
30	3.3	3.0	-	1.9	1.6	1.5	3.3	3.2	3.0	2.0	1.7	1.5	3.2	3.2	3.0	2.1	1.7	1.5	30
32	3.1	3.0	-	1.8	1.6	1.5	2.8	2.9	-	1.9	1.6	1.5	3.0	2.9	2.9	2.0	1.6	1.5	32
34	2.7	2.8	-	1.7	1.5	1.5	2.5	2.6	-	1.8	1.6	1.5	2.8	2.8	2.9	1.9	1.6	1.5	34
36	2.4	-	-	1.6	1.5	-	2.3	2.4	-	1.7	1.5	1.5	2.6	2.6	-	1.8	1.5	1.5	36
38	-	-	-	1.6	1.5	-	2.2	2.2	-	1.7	1.5	-	2.4	2.4	-	1.8	1.5	1.5	38
40	-	-	-	1.5	1.4	-	-	-	-	1.6	1.5	-	2.2	2.3	-	1.6	1.5	1.4	40
42	-	-	-	1.5	-	-	-	-	-	1.5	1.5	-	2.0	1.1	-	1.6	1.4	-	42
44	-	-	-	-	-	-	-	-	-	1.4	1.4	-	-	-	-	1.5	1.4	-	44
46	-	-	-	-	-	-	-	-	-	-	-	-	-	-	-	1.5	1.4	-	46
48	-	-	-	-	-	-	-	-	-	-	-	-	-	-	-	1.4	1.4	-	48
50	-	-	-	-	-	-	-	-	-	-	-	-	-	-	-	-	-	-	50

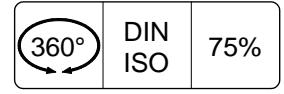
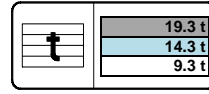
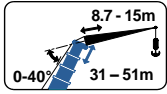


GROVE GMK 4080-1

80 TON

Lifting capacities at folding jib (excl.hook block etc.)
Capacités à la fléchette pliante

Tragfähigkeiten am wippbarer Klappspitze
Capaciteiten aan de klappjib

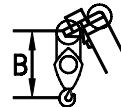


m	↕ 43.3m						↕ 47.21m						↕ 51.0m						m		
	8.7m			15m			8.7m			15m			8.7m			15m					
	0°	20°	40°	0°	20°	40°	0°	20°	40°	0°	20°	40°	0°	20°	40°	0°	20°	40°			
t	t	t	t	t	t	t	t	t	t	t	t	t	t	t	t	t	t	t	t	t	
8	5.7	-	-	-	-	-	-	-	-	-	-	-	-	-	-	-	-	-	-	-	8
9	5.7	-	-	3.1	-	-	4.6	-	-	-	-	-	-	-	-	-	-	-	-	-	9
10	5.7	-	-	3.1	-	-	4.6	-	-	2.7	-	-	3.9	-	-	-	-	-	-	-	10
11	5.6	4.4	-	3.1	-	-	4.6	-	-	2.7	-	-	3.9	-	-	-	2.3	-	-	-	11
12	5.6	4.3	-	3.1	-	-	4.6	4.2	-	2.7	-	-	3.9	3.7	-	-	2.3	-	-	-	12
13	5.6	4.2	3.4	3.1	-	-	4.6	4.1	-	2.7	-	-	3.9	3.7	-	-	2.3	-	-	-	13
14	5.6	4.1	3.4	3.0	-	-	4.6	4.0	3.3	2.7	-	-	3.9	3.7	-	-	2.3	-	-	-	14
15	5.6	4.0	3.3	3.0	2.3	-	4.6	4.0	3.3	2.7	2.3	-	3.9	3.7	3.2	-	2.3	-	-	-	15
16	5.5	4.0	3.3	3.0	2.2	-	4.6	3.9	3.2	2.7	2.2	-	3.9	3.7	3.2	-	2.3	2.2	-	-	16
18	5.4	3.8	3.2	3.0	2.1	1.7	4.6	3.8	3.2	2.7	2.1	-	3.9	3.6	3.1	-	2.3	2.1	-	-	18
20	5.1	3.7	3.2	2.9	2.1	1.7	4.6	3.6	3.1	2.6	2.0	1.7	3.9	3.5	3.1	-	2.3	2.0	1.6	-	20
22	4.7	3.6	3.1	2.7	2.0	1.6	4.5	3.5	3.1	2.6	2.0	1.6	3.9	3.4	3.0	-	2.3	1.9	1.6	-	22
24	4.4	3.4	3.1	2.5	1.9	1.6	4.3	3.4	3.0	2.5	1.9	1.6	3.9	3.4	3.0	-	2.3	1.9	1.6	-	24
26	4.2	3.3	3.0	2.4	1.8	1.6	4.1	3.3	3.0	2.4	1.8	1.6	3.9	3.3	3.0	-	2.3	1.8	1.6	-	26
28	3.7	3.3	3.0	2.3	1.8	1.5	3.8	3.3	3.0	2.3	1.8	1.5	3.8	3.2	2.9	-	2.2	1.8	1.5	-	28
30	3.3	3.2	3.0	2.2	1.7	1.5	3.5	3.2	3.0	2.2	1.7	1.5	3.4	3.1	2.9	-	2.2	1.7	1.5	-	30
32	3.1	3.0	3.0	2.1	1.7	1.5	3.2	3.1	2.9	2.1	1.7	1.5	2.9	3.1	2.9	-	2.1	1.7	1.5	-	32
34	2.8	2.8	2.8	2.0	1.6	1.5	2.8	2.9	2.9	2.0	1.7	1.5	2.5	2.7	2.8	-	2.0	1.6	1.5	-	34
36	2.6	2.7	2.7	1.9	1.6	1.5	2.4	2.6	2.7	1.9	1.6	1.5	2.2	2.3	2.4	-	1.9	1.6	1.5	-	36
38	2.3	2.4	-	1.8	1.5	1.5	2.1	2.2	2.3	1.8	1.6	1.5	1.8	2.0	2.0	-	1.9	1.6	1.4	-	38
40	2.0	2.1	-	1.7	1.5	1.5	1.8	1.9	2.0	1.8	1.6	1.4	1.5	1.7	1.7	-	1.8	1.5	1.4	-	40
42	1.8	1.8	-	1.6	1.5	1.4	1.5	1.6	-	1.7	1.5	1.4	1.3	1.4	1.4	-	1.5	1.5	1.4	-	42
44	1.5	1.6	-	1.6	1.5	-	1.3	1.4	-	1.5	1.5	1.4	1.0	1.1	-	-	1.3	1.5	1.4	-	44
46	1.3	-	-	1.5	1.5	-	1.1	1.2	-	1.3	1.5	1.4	0.8	0.9	-	-	1.0	1.3	1.4	-	46
48	-	-	-	1.3	1.4	-	0.9	0.9	-	1.1	1.3	-	0.6	0.7	-	-	0.8	1.0	1.1	-	48
50	-	-	-	1.2	1.2	-	0.7	-	-	0.9	1.1	-	-	-	-	-	0.7	0.8	-	-	50
52	-	-	-	1.0	-	-	-	-	-	0.8	0.9	-	-	-	-	-	-	0.6	-	-	52
54	-	-	-	-	-	-	-	-	-	0.6	0.7	-	-	-	-	-	-	-	-	-	54

Hook block/Crane hook



50kN Ø 16mm



Unterflasche/Hakengehänge

Crochet-mouflé/Crochet simple

Kraanblok/Kraanhaak

Capacity / Capacité Tragfähigkeit / Capaciteit	Number of sheaves / Nombre de poulies Anzahl der Rollen / Aantal schijven	Number of lines / Nombre de brins Strangzahl / Aantal parten	Weight / Poids Gewicht / Gewicht	"B"
SWL 40 t	3	7	450 kg	2.9 m
SWL 16 t	1	1	210 kg	2.8 m

