



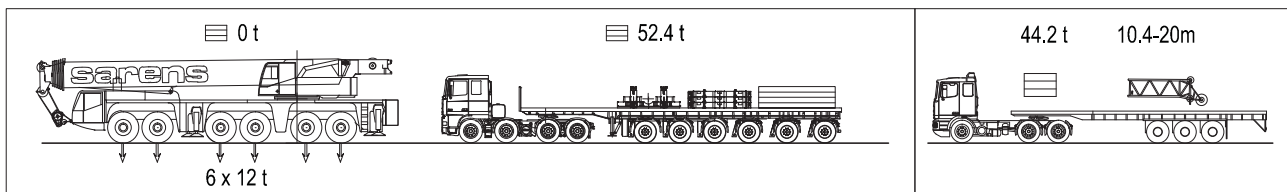
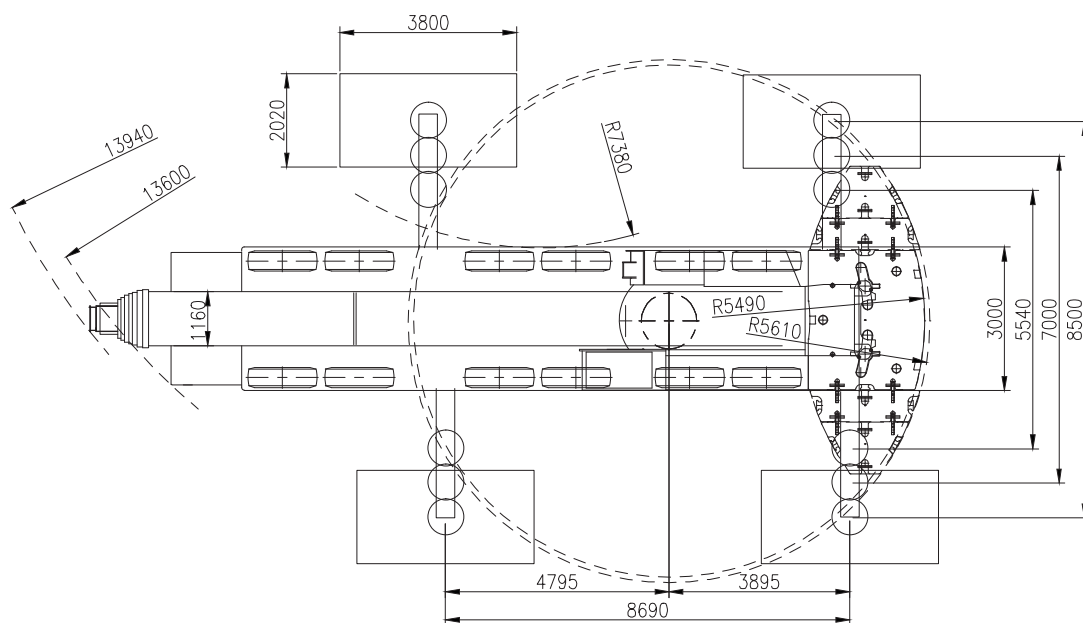
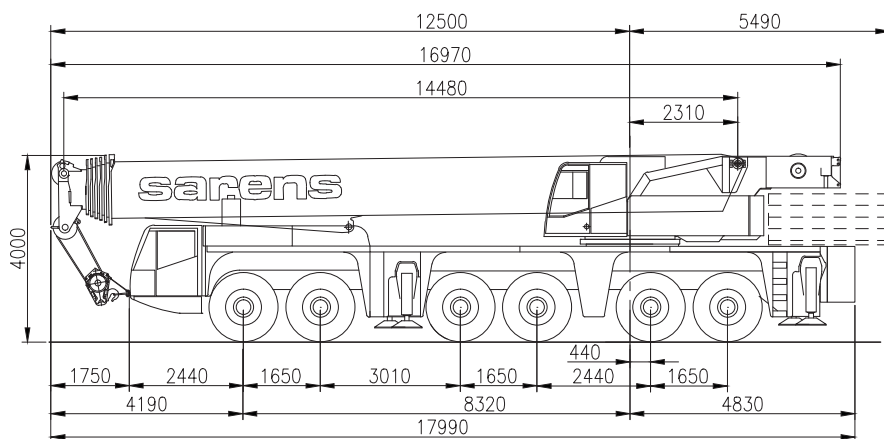
sarens

group

www.sarens.com

DEMAG AC 250-1

250 TON





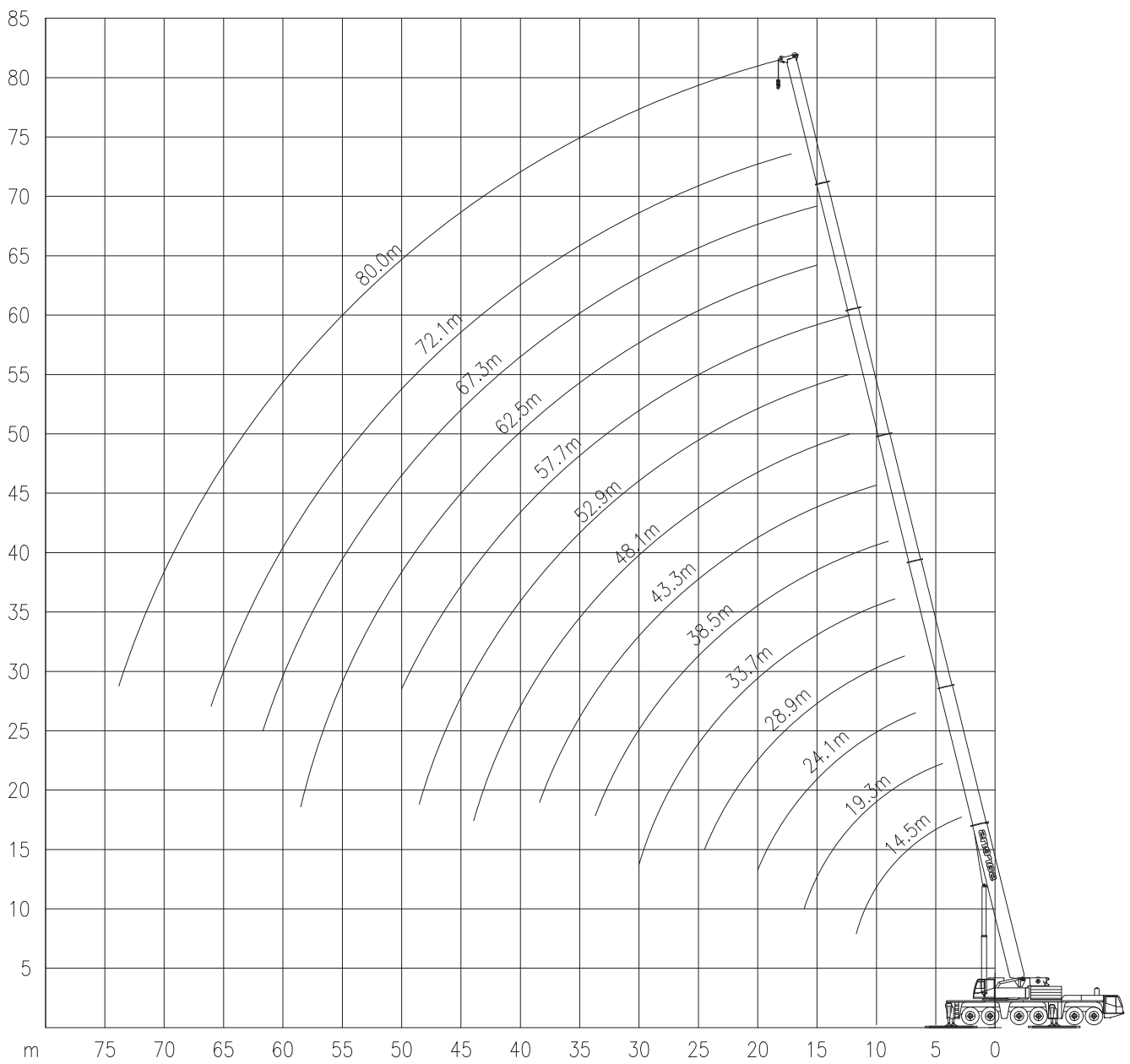
DEMAG AC 250-1

Working ranges
Portées

250 TON

Arbeitsbereiche
Werkbereich

Ha



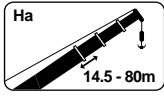


DEMAG AC 250-1

250 TON

Lifting capacities at main boom (excl.hook block etc.)
Capacités à la flèche principale

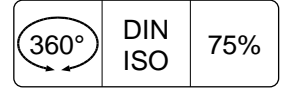
Tragfähigkeiten am Hauptausleger
Capaciteiten aan de hoofdgiëk



Ha

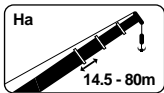


8.5m



	Ha															
	14,5m	19,3m	24,1m	28,9m	33,7m	38,5m	43,3m	48,1m	52,9m	57,7m	62,5m	67,3m	72,1m	80,0m		
	t	t	t	t	t	t	t	t	t	t	t	t	t	t		
3	155.0	147.5	-	-	-	-	-	-	-	-	-	-	-	-	3	
4	155.0	147.5	146.0	-	-	-	-	-	-	-	-	-	-	-	4	
4.5	155.0	144.5	143.0	134.5	-	-	-	-	-	-	-	-	-	-	4.5	
5	146.5	144.5	143.0	134.5	-	-	-	-	-	-	-	-	-	-	5	
6	129.0	129.0	126.0	124.0	106.5	-	-	-	-	-	-	-	-	-	6	
7	115.0	115.5	114.0	110.5	101.0	81.1	-	-	-	-	-	-	-	-	7	
8	104.0	104.0	103.0	100.0	94.8	78.1	60.6	-	-	-	-	-	-	-	8	
9	94.4	94.7	94.0	91.1	88.8	74.9	58.7	47.6	-	-	-	-	-	-	9	
10	84.4	86.6	86.2	83.6	82.9	71.7	57.0	44.5	-	-	-	-	-	-	10	
12	50.8	73.7	73.2	71.3	70.9	64.8	53.6	39.1	34.2	29.4	-	-	-	-	12	
14	-	61.4	61.9	60.9	61.7	57.7	49.8	34.3	30.6	26.9	23.6	-	-	-	14	
16	-	45.9	-	52.2	53.0	51.5	46.0	31.0	27.1	24.4	21.6	18.1	14.7	-	16	
18	-	-	45.8	46.6	45.6	46.7	42.2	28.4	24.7	21.9	19.9	17.3	14.7	9.3	18	
20	-	-	37.1	39.8	38.9	39.8	39.3	26.1	22.3	20.2	18.1	16.1	14.4	9.3	20	
22	-	-	-	34.5	35.4	34.4	35.5	24.7	20.0	18.4	16.8	14.8	13.6	9.3	22	
24	-	-	-	31.6	31.1	30.8	31.1	23.3	18.2	16.7	15.5	13.9	12.8	9.3	24	
26	-	-	-	-	27.5	28.5	27.6	21.9	16.9	15.1	14.3	13.0	12.1	9.3	26	
28	-	-	-	-	24.8	25.5	24.6	20.5	15.8	14.0	13.0	12.1	11.4	9.3	28	
30	-	-	-	-	21.1	23.0	22.1	19.5	14.8	12.9	12.1	11.2	10.7	9.0	30	
32	-	-	-	-	-	20.9	19.9	18.7	13.9	11.8	11.2	10.4	10.0	8.5	32	
34	-	-	-	-	-	18.4	18.0	17.8	13.3	11.1	10.3	9.7	9.3	8.0	34	
36	-	-	-	-	-	-	16.4	17.0	12.7	10.5	9.5	9.0	8.7	7.5	36	
38	-	-	-	-	-	-	15.5	15.7	12.0	10.0	8.8	8.3	8.2	7.0	38	
40	-	-	-	-	-	-	-	14.5	11.4	9.5	8.3	7.7	7.6	6.6	40	
42	-	-	-	-	-	-	-	13.3	10.9	9.1	7.9	7.0	7.1	6.2	42	
44	-	-	-	-	-	-	-	10.8	10.6	8.6	7.5	6.6	6.6	5.8	44	
46	-	-	-	-	-	-	-	-	10.2	8.2	7.1	6.2	6.0	5.4	46	
48	-	-	-	-	-	-	-	-	9.9	8.0	6.7	5.9	5.7	5.0	48	
50	-	-	-	-	-	-	-	-	-	7.7	6.4	5.5	5.3	4.6	50	
54	-	-	-	-	-	-	-	-	-	-	5.9	4.8	4.6	3.9	54	
58	-	-	-	-	-	-	-	-	-	-	5.4	4.4	4.0	3.3	58	
62	-	-	-	-	-	-	-	-	-	-	-	3.9	3.5	2.8	62	
66	-	-	-	-	-	-	-	-	-	-	-	-	3.0	2.3	66	
70	-	-	-	-	-	-	-	-	-	-	-	-	-	2.0	70	
74	-	-	-	-	-	-	-	-	-	-	-	-	-	1.6	74	

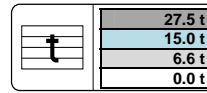
Duty charts other boom lengths available on request / Charges pour les autre flèches sur demande / Tragfähigkeiten für anderes Ausleger auf anfrage / Lasttabellen voor andere giek lengtes op aanvraag. Other available boom lengths: 25.2m - 30.0m - 36.1m - 40.9m - 47.1m - 51.9m - 58.0m - 62.8m - 68.9m - 73.7m



Ha



5.54m



	Ha															
	14,5m	19,3m	24,1m	28,9m	33,7m	38,5m	43,3m	48,1m	52,9m	57,7m	62,8m	68,9m	72,1m	80,0m		
	t	t	t	t	t	t	t	t	t	t	t	t	t	t		
3	155.0	147.5	-	-	-	-	-	-	-	-	-	-	-	-	3	
3.5	151.5	145.5	-	-	-	-	-	-	-	-	-	-	-	-	3.5	
4	138.5	120.5	105.5	-	-	-	-	-	-	-	-	-	-	-	4	
4.5	116.0	102.5	90.6	-	-	-	-	-	-	-	-	-	-	-	4.5	
5	97.6	88.2	78.8	73.1	-	-	-	-	-	-	-	-	-	-	5	
6	66.6	67.9	64.2	58.8	53.3	-	-	-	-	-	-	-	-	-	6	
7	48.8	52.5	52.6	48.7	44.6	42.8	-	-	-	-	-	-	-	-	7	
8	37.7	41.0	42.3	41.2	40.0	36.8	34.6	-	-	-	-	-	-	-	8	
9	30.3	33.3	35.2	35.8	34.7	32.1	30.8	28.4	-	-	-	-	-	-	9	
10	24.9	27.7	29.4	30.1	30.1	29.1	27.3	26	-	-	-	-	-	-	10	
12	17.7	20.1	21.7	22.3	22.8	22.7	22.4	20.8	19.5	18	-	-	-	-	12	
14	-	15.3	16.8	17.3	17.7	17.7	17.7	17.1	15.9	14.6	14.2	-	-	-	14	
16	-	12.0	13.3	13.8	14.2	14.1	14.2	13.8	13.2	12	11.7	10.3	8.3	-	16	
18	-	-	10.8	11.3	11.6	11.6	11.6	11.2	11	10	9.7	8.5	6.5	5.9	18	
20	-	-	8.8	9.3	9.6	9.6	9.6	9.3	9	8.2	8	6.9	5	4.5	20	
22	-	-	-	7.7	8.1	8.0	8.0	7.7	7.4	6.8	6.7	5.6	3.8	3.3	22	
24	-	-	-	6.5	6.8	6.7	6.7	6.4	6.2	5.6	5.5	4.5	2.7	2.3	24	
26	-	-	-	-	5.8	5.7	5.7	5.4	5.1	4.6	4.5	3.5	1.8	1.4	26	
28	-	-	-	-	4.9	4.8	4.8	4.5	4.3	3.7	3.6	2.7	-	-	28	
30	-	-	-	-	4.2	4.1	4.1	3.8	3.5	2.9	2.8	2	-	-	30	
32	-	-	-	-	-	3.4	3.4	3.0	2.7	2.2	2.2	1.3	-	-	32	
34	-	-	-	-	-	2.8	2.8	2.4	2	1.6	1.6	-	-	-	34	
36	-	-	-	-	-	-	2.2	1.8	1.5	-	1	-	-	-	36	
38	-	-	-	-	-	-	1.7	1.3	-	-	-	-	-	-	38	

Duty charts other boom lengths available on request / Charges pour les autre flèches sur demande / Tragfähigkeiten für anderes Ausleger auf anfrage / Lasttabellen voor andere giek lengtes op aanvraag. Other available boom lengths: 25.2m - 30.0m - 36.1m - 40.9m - 47.1m - 51.9m - 58.0m - 62.8m - 68.9m - 73.7m

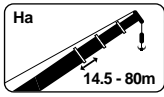


DEMAG AC 250-1

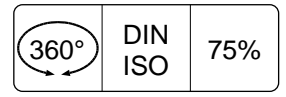
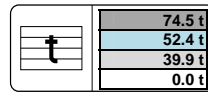
250 TON

Lifting capacities at main boom (excl.hook block etc.)
Capacités à la flèche principale

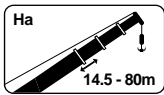
Tragfähigkeiten am Hauptausleger
Capaciteiten aan de hoofdgiel



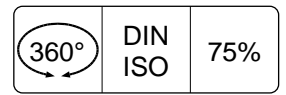
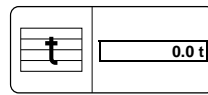
Ha



	14,5m	19,3m	24,1m	28,9m	33,7m	38,5m	43,3m	48,1m	52,9m	57,7m	62,5m	67,3m	72,1m	80,0m	
	t	t	t	t	t	t	t	t	t	t	t	t	t	t	
3	155.0	147.5	-	-	-	-	-	-	-	-	-	-	-	-	3
4	155.0	147.5	146.0	-	-	-	-	-	-	-	-	-	-	-	4
4,5	147.5	144.5	146.0	-	-	-	-	-	-	-	-	-	-	-	4,5
5	137.5	137.5	136.0	134.5	-	-	-	-	-	-	-	-	-	-	5
6	120.5	120.5	120.0	119.0	106.5	-	-	-	-	-	-	-	-	-	6
7	107.0	107.0	106.5	105.5	101.0	81.1	-	-	-	-	-	-	-	-	7
8	96.0	96.9	95.8	94.9	94.4	78.1	60.6	-	-	-	-	-	-	-	8
9	86.8	87.8	86.3	84.8	81.7	74.9	58.7	47.6	-	-	-	-	-	-	9
10	84.4	73.4	73.3	72.6	71.4	69.3	57.0	44.5	-	-	-	-	-	-	10
12	50.8	55.0	54.1	55.4	54.6	54.4	53.6	39.1	34.2	29.4	-	-	-	-	12
14	-	43.1	43.6	43.4	44.6	43.8	42.8	34.3	30.6	26.9	23.6	-	-	-	14
16	-	35.7	35.8	36.5	36.4	35.7	34.7	31.0	27.1	24.4	21.6	18.1	14.7	-	16
18	-	-	30.7	30.8	30.5	29.8	28.8	28.4	24.7	21.9	19.9	17.3	14.7	9.3	18
20	-	-	26.2	26.3	26.0	25.3	24.4	25.2	22.3	20.2	18.1	16.1	14.4	9.3	20
22	-	-	-	22.8	22.6	21.8	20.9	21.7	20.0	18.4	16.8	14.8	13.6	9.3	22
24	-	-	-	20.0	19.6	20.3	19.7	18.9	17.9	16.7	15.5	13.9	12.8	9.3	24
26	-	-	-	-	17.3	18.0	17.4	16.6	16.9	15.1	14.3	13.0	12.1	9.3	26
28	-	-	-	-	16.3	16.1	15.4	14.7	15.1	13.4	13.0	12.1	11.4	9.3	28
30	-	-	-	-	14.8	14.4	13.8	13.9	13.4	12.6	11.8	11.2	10.7	9.0	30
32	-	-	-	-	-	13.0	12.4	12.8	12.0	11.8	10.7	10.4	10.0	8.5	32
34	-	-	-	-	-	11.8	11.4	11.5	10.8	10.9	10.0	9.6	9.3	8.0	34
36	-	-	-	-	-	-	10.9	10.5	9.9	9.8	9.4	8.7	8.7	7.5	36
38	-	-	-	-	-	-	10.0	9.5	9.4	8.8	8.8	8.1	8.0	7.0	38
40	-	-	-	-	-	-	-	8.7	8.7	8.0	7.9	7.5	7.2	6.6	40
42	-	-	-	-	-	-	-	7.9	7.9	7.4	7.2	6.9	6.4	6.2	42
44	-	-	-	-	-	-	-	7.4	7.2	6.9	6.5	6.2	5.7	5.7	44
46	-	-	-	-	-	-	-	-	6.6	6.5	5.9	5.6	5.1	5.1	46
48	-	-	-	-	-	-	-	-	6.1	5.9	5.4	5.0	4.5	4.5	48
50	-	-	-	-	-	-	-	-	-	5.4	5.0	4.5	4.0	3.9	50
54	-	-	-	-	-	-	-	-	-	-	4.2	3.5	3.4	2.8	54
58	-	-	-	-	-	-	-	-	-	-	3.5	2.6	2.9	1.9	58
62	-	-	-	-	-	-	-	-	-	-	-	1.8	1.2	1.1	62



Ha



	14,5m	19,3m	24,1m	28,9m	33,7m	36,1	38,5m	40,9	
	t	t	t	t	t	t	t	t	
3	26.8	26.8	-	-	-	-	-	-	3
3,5	20.8	21.8	-	-	-	-	-	-	3,5
4	16.4	18.0	18.1	-	-	-	-	-	4
4,5	13.0	15.0	15.4	-	-	-	-	-	4,5
5	10.3	12.6	13.3	12.6	-	-	-	-	5
6	6.3	8.9	9.9	9.6	9.2	9.1	-	-	6
7	3.5	6.2	7.5	7.4	7.2	7.2	6.3	6.4	7
8	1.1	4.2	5.6	5.6	5.6	5.7	4.8	4.9	8
9	-	2.6	4.1	4.2	4.3	4.4	3.7	3.8	9
10	-	1.2	2.8	3.1	3.2	3.4	2.7	2.8	10
12	-	-	-	1.3	1.5	1.7	1.1	1.3	12

Duty charts other boom lengths available on request / Charges pour les autres flèches sur demande / Tragfähigkeiten für anderes Ausleger auf Anfrage / Lasttabellen voor andere gielengtes op aanvraag. Other available boom lengths: 25.2m - 30.0m - 36.1m - 40.9m - 47.1m - 51.9m - 58.0m - 62.8m - 68.9m - 73.7m



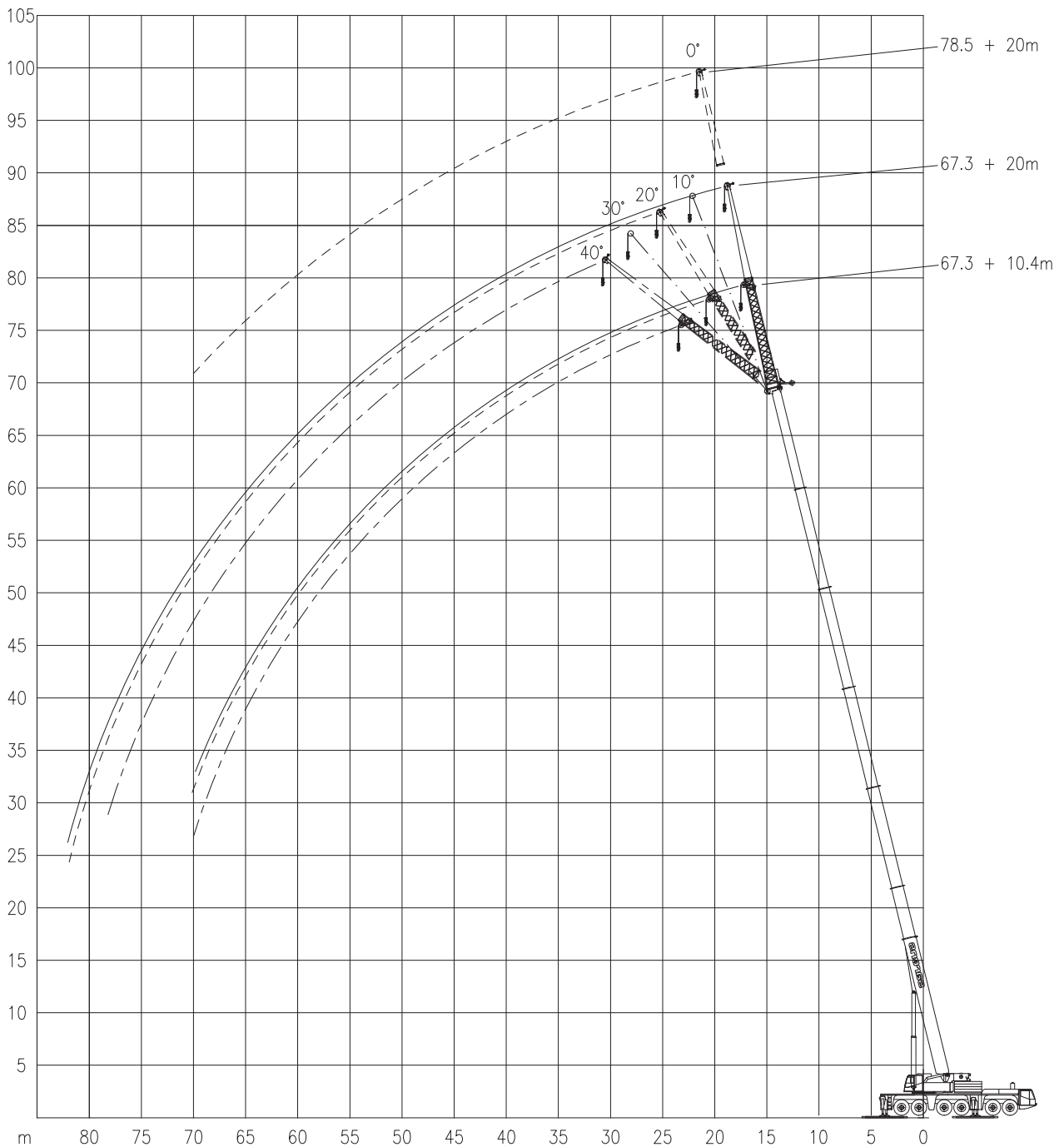
DEMAG AC 250-1

Working ranges
Portées

250 TON

Arbeitsbereiche
Werkbereich

HaVHY (Hydraulic adjustable angle)

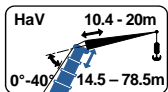




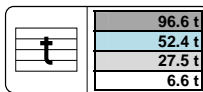
DEMAG AC 250-1

250 TON

Lifting capacities at main boom extension Tragfähigkeiten am hauptauslegerverlängerung
 Capacités à rallonge de flèche Capaciteiten aan de hoofdgiekverlenging



HaVHY



DIN
ISO

75%

	↙ 14.5m										↙ 48.1m										
	10.4m					20m					10.4m					20m					
	0°	10°	20°	30°	40°	0°	10°	20°	30°	40°	0°	10°	20°	30°	40°	0°	10°	20°	30°	40°	
3	23.6	-	-	-	-	-	-	-	-	-	-	-	-	-	-	-	-	-	-	-	3
4	23.6	-	-	-	-	-	-	-	-	-	-	-	-	-	-	-	-	-	-	-	4
5	23.6	20.7	-	-	-	10.7	-	-	-	-	-	-	-	-	-	-	-	-	-	-	5
6	22.4	18.9	-	-	-	10.4	-	-	-	-	-	-	-	-	-	-	-	-	-	-	6
7	20.9	17.2	14.3	-	-	10.2	-	-	-	-	-	-	-	-	-	-	-	-	-	-	7
8	19.3	16.0	13.4	11.5	-	9.8	9.3	-	-	-	-	-	-	-	-	-	-	-	-	-	8
9	17.9	14.9	12.6	10.9	9.7	9.5	8.8	-	-	-	-	-	-	-	-	-	-	-	-	-	9
10	16.7	13.7	11.9	10.4	9.3	9.1	8.3	-	-	-	-	-	-	-	-	-	-	-	-	-	10
12	14.2	12.2	10.6	9.4	8.6	8.4	7.5	6.7	-	-	16.1	-	-	-	-	7.4	-	-	-	-	12
14	12.2	10.7	9.7	8.7	8.0	7.7	6.8	6.1	5.6	-	15.3	14.1	-	-	-	7.2	-	-	-	-	14
16	10.8	9.7	8.8	8.1	7.6	7.0	6.2	5.7	5.2	-	14.4	13.5	11.6	9.9	-	6.9	6.5	-	-	-	16
18	9.4	8.7	8.1	7.7	7.4	6.3	5.8	5.3	4.9	4.6	13.5	12.8	11.1	9.5	8.5	6.7	6.2	-	-	-	18
20	8.5	8.0	7.7	7.4	7.3	5.8	5.4	5.0	4.6	4.4	12.5	12.1	10.6	9.2	8.2	6.5	6.0	5.5	-	-	20
22	-	7.4	7.4	-	-	5.4	5.0	4.7	4.5	4.2	11.5	11.3	10.1	8.9	8.0	6.3	5.8	5.3	4.9	-	22
24	-	-	-	-	-	5.0	4.7	4.5	4.3	4.1	10.6	10.4	9.7	8.6	7.9	6.0	5.6	5.1	4.8	-	24
26	-	-	-	-	-	4.7	4.5	4.3	4.1	4.0	9.7	9.6	9.2	8.4	7.7	5.8	5.4	5.0	4.6	4.3	26
28	-	-	-	-	-	4.4	4.3	4.1	4.0	4.0	9.1	8.9	8.8	8.2	7.6	5.6	5.2	4.8	4.5	4.2	28
30	-	-	-	-	-	4.2	4.1	4.1	4.0	-	8.5	8.4	8.3	7.8	7.4	5.4	5.0	4.7	4.4	4.1	30
32	-	-	-	-	-	-	-	-	-	-	7.9	7.8	7.8	7.5	7.1	5.2	4.8	4.6	4.3	4.1	32
34	-	-	-	-	-	-	-	-	-	-	7.3	7.3	7.3	7.1	6.9	5.1	4.7	4.4	4.2	4.0	34
36	-	-	-	-	-	-	-	-	-	-	6.8	6.7	6.8	6.7	6.6	4.9	4.6	4.3	4.1	4.0	36
38	-	-	-	-	-	-	-	-	-	-	6.4	6.3	6.3	6.3	6.3	4.7	4.5	4.2	4.0	3.9	38
40	-	-	-	-	-	-	-	-	-	-	6.0	6.0	6.0	6.0	6.0	4.6	4.3	4.1	4.0	3.9	40
42	-	-	-	-	-	-	-	-	-	-	5.7	5.6	5.7	5.7	5.7	4.4	4.2	4.0	3.9	3.9	42
44	-	-	-	-	-	-	-	-	-	-	5.3	5.3	5.3	5.4	5.4	4.3	4.1	4.0	3.9	3.8	44
46	-	-	-	-	-	-	-	-	-	-	5.0	5.0	5.0	5.0	5.1	4.1	4.0	3.9	3.8	3.8	46
48	-	-	-	-	-	-	-	-	-	-	4.7	4.7	4.7	4.8	4.8	3.9	3.8	3.7	3.7	3.8	48
50	-	-	-	-	-	-	-	-	-	-	4.5	4.5	4.5	4.5	4.6	3.8	3.7	3.6	3.6	3.7	50
54	-	-	-	-	-	-	-	-	-	-	4.1	4.1	4.1	4.1	-	3.4	3.4	3.4	3.4	3.4	54
58	-	-	-	-	-	-	-	-	-	-	-	-	-	-	-	3.1	3.1	3.1	3.2	3.2	58
62	-	-	-	-	-	-	-	-	-	-	-	-	-	-	-	2.8	2.8	2.9	2.9	1.9	62
66	-	-	-	-	-	-	-	-	-	-	-	-	-	-	-	1.6	1.7	1.7	1.7	-	66

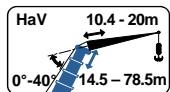
	↙ 62.5m										↙ 67.3m										
	10.4m					20m					10.4m					20m					
	0°	10°	20°	30°	40°	0°	10°	20°	30°	40°	0°	10°	20°	30°	40°	0°	10°	20°	30°	40°	
16	12.5	-	-	-	-	-	-	-	-	-	10.3	-	-	-	-	5.8	-	-	-	-	16
18	12.2	11.6	-	-	-	6.1	-	-	-	-	-	-	-	-	-	-	-	-	-	-	18
20	11.8	11.3	10.6	-	-	5.9	-	-	-	-	10.3	10.2	-	-	-	5.7	-	-	-	-	20
22	11.2	10.9	10.2	9.0	-	5.8	5.4	-	-	-	10.2	10.2	10.1	9.0	-	5.5	5.2	-	-	-	22
24	10.6	10.4	9.9	8.7	7.9	5.6	5.2	4.9	-	-	10.0	9.9	9.9	8.7	7.9	5.4	5.0	-	-	-	24
26	10.0	9.8	9.5	8.5	7.8	5.4	5.1	4.7	-	-	9.8	9.6	9.5	8.5	7.8	5.2	4.9	4.6	-	-	26
28	9.3	9.2	9.1	8.3	7.7	5.3	4.9	4.6	4.3	-	9.3	9.2	9.1	8.4	7.7	5.1	4.8	4.5	4.2	-	28
30	8.6	8.6	8.6	8.0	7.5	5.1	4.8	4.5	4.2	4.1	8.7	8.7	8.7	8.2	7.6	4.9	4.6	4.4	4.1	-	30
32	7.9	8.0	8.0	7.6	7.2	5.0	4.6	4.4	4.1	4.0	8.1	8.1	8.2	7.8	7.4	4.8	4.5	4.3	4.0	3.9	32
34	7.2	7.3	7.4	7.2	7.0	4.8	4.5	4.3	4.0	3.9	7.5	7.6	7.6	7.4	7.1	4.7	4.4	4.2	4.0	3.8	34
36	6.8	6.8	6.9	6.8	6.8	4.7	4.4	4.2	4.0	3.8	6.9	7.1	7.1	7.0	6.8	4.6	4.3	4.1	3.9	3.8	36
38	6.3	6.4	6.4	6.5	6.5	4.5	4.3	4.1	3.9	3.8	6.5	6.5	6.6	6.6	6.5	4.4	4.2	4.0	3.8	3.7	38
40	5.9	6.0	6.0	6.1	6.1	4.4	4.2	4.0	3.8	3.7	6.1	6.1	6.2	6.2	6.2	4.3	4.1	3.9	3.7	3.7	40
42	5.4	5.5	5.6	5.6	5.7	4.2	4.0	3.9	3.8	3.7	5.7	5.8	5.8	5.8	5.9	4.2	4.0	3.8	3.7	3.6	42
44	5.0	5.1	5.2	5.2	5.3	4.0	3.9	3.8	3.7	3.6	5.4	5.4	5.4	5.5	5.5	4.0	3.9	3.7	3.6	3.6	44
46	4.5	4.7	4.8	4.8	4.9	3.9	3.8	3.7	3.6	3.6	5.0	5.0	5.1	5.1	5.2	3.9	3.8	3.7	3.6	3.5	46
48	4.3	4.3	4.3	4.4	4.5	3.7	3.6	3.5	3.5	3.5	4.6	4.7	4.7	4.8	4.8	3.7	3.6	3.6	3.5	3.5	48
50	4.0	4.0	4.1	4.1	4.2	3.5	3.5	3.4	3.4	3.4	4.2	4.3	4.4	4.4	4.5	3.5	3.5	3.4	3.4	3.4	50
54	3.4	3.4	3.5	3.5	3.5	3.2	3.2	3.1	3.2	3.2	3.7	3.8	3.8	3.8	3.8	3.2	3.2	3.2	3.2	3.2	54
58	2.8	2.9	2.9	2.9	2.9	2.7	2.8	2.9	2.9	3.0	3.2	3.3	3.3	3.3	3.3	2.9	2.9	2.9	2.9	3.0	58
62	2.4	2.4	2.5	2.5	2.5	2.3	2.4	2.4	2.5	2.5	2.7	2.8	2.8	2.8	2.8	2.5	2.6	2.6	2.7	2.7	62
66	2.0	2.1	2.1	2.0	2.0	1.8	1.9	2.0	2.1	2.1	2.4	2.4	2.4	2.4	2.4	2.1	2.2	2.3	2.3	2.4	66
70	-	-	-	-	-	1.5	1.6	1.6	1.6	1.6	2.0	2.0	2.0	2.1	2.0	1.8	1.8	1.9	1.9	2.0	70
74	-	-	-	-	-	1.3	1.3	1.3	1.3	1.2	-	-	-	-	-	1.5	1.5	1.5	1.6	1.6	74
78	-	-	-	-	-	-	1.0	1.0	-	-	-	-	-	-	-	1.2	1.3	1.3	1.3	1.2	78
82	-	-	-	-	-	-	-	-	-	-	-	-	-	-	-	1.0	1.0	1.0	-	-	82



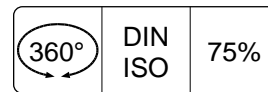
DEMAG AC 250-1

250 TON

Lifting capacities at main boom extension Tragfähigkeiten am hauptauslegerverlängerung
 Capacités à rallonge de flèche Capaciteiten aan de hoofdgiekverlenging



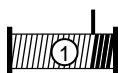
HaVHY



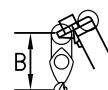
	↕ 72.1m										↕ 78.5m										
	10.4m					20m					10.4m					20m					
	0°	10°	20°	30°	40°	0°	10°	20°	30°	40°	0°	10°	20°	30°	40°	0°	10°	20°	30°	40°	
18	8.7	-	-	-	-	5.0	-	-	-	-	6.0	-	-	-	-	-	-	-	-	-	18
20	8.7	-	-	-	-	5.0	-	-	-	-	6.0	-	-	-	-	-	-	-	-	-	20
22	8.7	8.6	-	-	-	5.0	-	-	-	-	6.0	-	-	-	-	3.5	-	-	-	-	22
24	8.7	8.6	8.6	-	-	5.0	4.8	-	-	-	6.0	6.0	-	-	-	3.5	-	-	-	-	24
26	8.7	8.5	8.6	8.5	7.8	4.9	4.7	-	-	-	6.0	6.0	6.0	-	-	3.5	3.4	-	-	-	26
28	8.7	8.4	8.5	8.3	7.7	4.8	4.6	4.3	-	-	6.0	6.0	6.0	6.0	6.0	3.5	3.4	-	-	-	28
30	8.5	8.3	8.2	8.1	7.6	4.7	4.5	4.2	4.0	-	6.0	6.0	6.0	6.0	6.0	3.5	3.4	3.4	-	-	30
32	8.0	8.0	8.0	7.8	7.5	4.6	4.4	4.1	3.9	-	6.0	6.0	6.0	6.0	6.0	3.5	3.4	3.4	-	-	32
34	7.5	7.5	7.6	7.6	7.4	4.5	4.2	4.0	3.9	3.7	5.8	6.0	6.0	6.0	6.0	3.5	3.4	3.4	3.4	-	34
36	7.1	7.1	7.1	7.2	7.0	4.4	4.1	3.9	3.8	3.7	5.6	5.8	5.9	5.9	6.0	3.5	3.4	3.4	3.4	3.4	36
38	6.6	6.7	6.7	6.8	6.7	4.3	4.1	3.9	3.7	3.6	5.3	5.4	5.6	5.7	5.8	3.5	3.4	3.4	3.4	3.4	38
40	6.1	6.2	6.3	6.3	6.3	4.2	4.0	3.8	3.6	3.6	5.0	5.1	5.3	5.4	5.5	3.4	3.4	3.4	3.4	3.4	40
42	5.7	5.8	5.8	5.9	5.9	4.1	3.9	3.7	3.6	3.5	4.8	4.8	5.0	5.1	5.1	3.4	3.3	3.4	3.4	3.3	42
44	5.4	5.4	5.5	5.5	5.6	4.0	3.8	3.7	3.5	3.5	4.5	4.5	4.7	4.7	4.8	3.3	3.3	3.3	3.3	3.3	44
46	5.0	5.1	5.1	5.2	5.2	3.9	3.7	3.6	3.5	3.4	4.2	4.2	4.3	4.4	4.5	3.3	3.2	3.3	3.2	3.2	46
48	4.7	4.7	4.8	4.8	4.9	3.7	3.6	3.5	3.4	3.4	3.9	4.0	4.0	4.1	4.1	3.2	3.1	3.2	3.1	3.2	48
50	4.3	4.4	4.4	4.5	4.6	3.5	3.5	3.5	3.4	3.4	3.7	3.7	3.8	3.8	3.9	3.2	3.1	3.1	3.1	3.1	50
54	3.6	3.7	3.8	3.8	3.9	3.1	3.2	3.2	3.2	3.3	3.1	3.2	3.2	3.3	3.3	2.8	2.9	2.9	2.9	2.9	54
58	3.1	3.1	3.2	3.2	3.3	2.8	2.8	2.9	2.9	3.0	2.6	2.7	2.7	2.8	2.8	2.4	2.5	2.6	2.7	2.7	58
62	2.6	2.6	2.7	2.7	2.8	2.4	2.5	2.6	2.6	2.7	2.1	2.2	2.2	2.3	2.3	2.0	2.1	2.2	2.3	2.3	62
66	2.1	2.1	2.2	2.2	2.2	2.0	2.1	2.2	2.3	2.4	1.7	1.8	1.8	1.9	1.9	1.6	1.7	1.8	1.9	1.9	66
70	1.7	1.7	1.7	1.7	1.8	1.6	1.7	1.8	1.9	1.9	1.3	1.4	1.4	1.4	1.4	1.2	1.3	1.4	1.5	1.5	70
74	1.4	1.4	1.4	1.3	1.3	1.3	1.3	1.4	1.5	1.5	-	-	-	1.0	1.0	-	-	1.1	1.1	1.2	74
78	-	-	1.0	-	-	-	-	1.0	-	1.1	-	-	-	-	-	-	-	-	-	-	78

Duty charts other boom lengths available on request / Charges pour les autre flèches sur demande / Tragfähigkeiten für anderes Ausleger auf anfrage / Lasttabellen voor andere giek lengtes op aanvraag. Other available boom lengths: 19.3m-24.1m-25.2m-28.9m-30m-33.7m-36.1m-38.5m-40.9m-43.3m-47.1m-51.9m-58.0m-62.8m-68.9m-73.7m

Hook block/Crane hook



115 kN Ø 23mm



Unterflasche/Hakengehänge
Kraanblok/Kraanhaak

Capacity / Capacité Tragfähigkeit / Capaciteit	Number of sheaves / Nombre de poulies Anzahl der Rollen / Aantal schijven	Number of lines / Nombre de brins Strangzahl / Aantal parten	Weight / Poids Gewicht / Gewicht	"B"
123.9 t	5	11	1200 kg	3.0 m
35.2 t	3	7	1050 kg	2.7 m

