



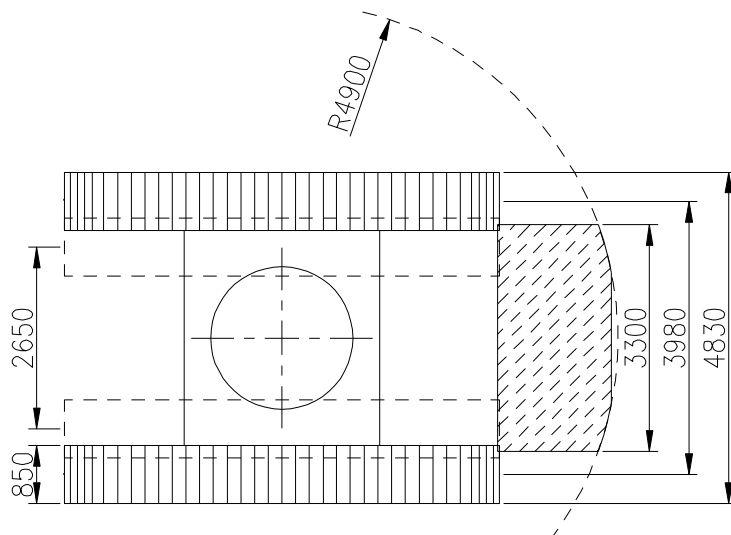
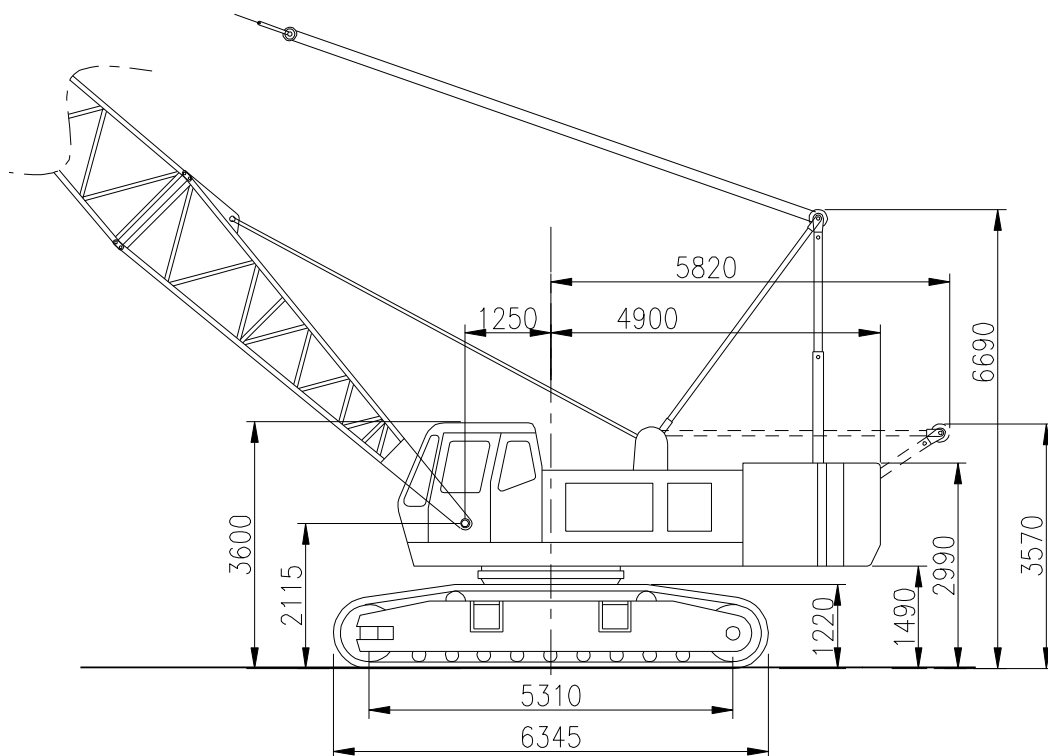
sarens

group

www.sarens.com

HITACHI KH 300-3

80 TON





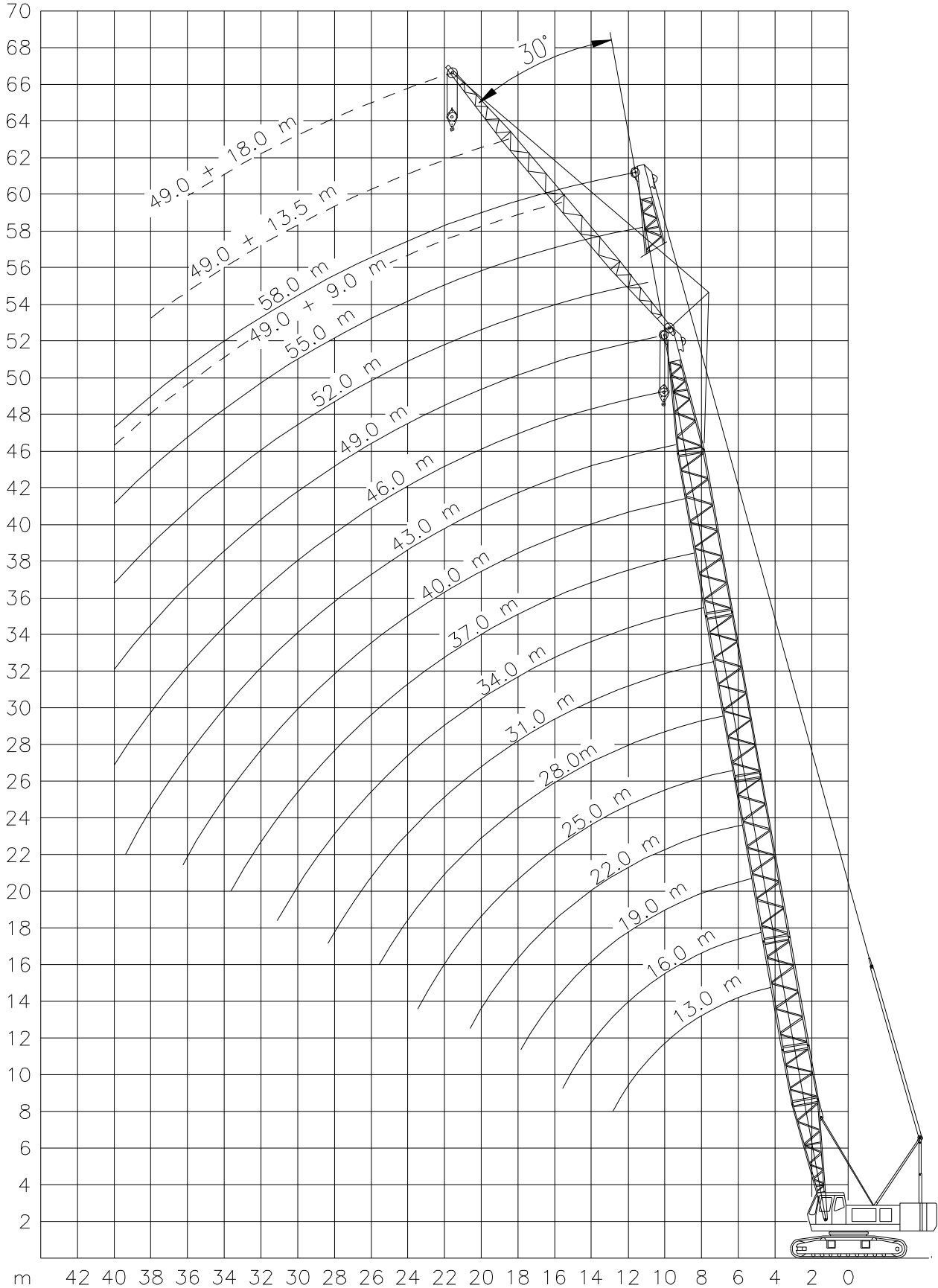
HITACHI KH 300-3

80 TON

Working ranges main boom and fixed fly jib
Portées de la flèche principale et fléchette fixe

Arbeitsbereiche Haupt- und Hilfsausleger
Werkbereich van de hoofd- en hulpgiëk

MB/FJ



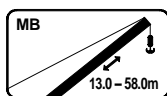


HITACHI KH 300-3

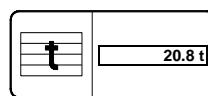
Lifting capacities
Capacités à la flèche

80 TON

Tragfähigkeiten
Capaciteiten



MB



	13.0m	16.0m	19.0m	22.0m	25.0m	28.0m	31.0m	34.0	
	t	t	t	t	t	t	t	t	
2.0	(3.9)	-	-	-	-	-	-	-	2.0
3.0	80.0	(4.4)	(4.9)	-	-	-	-	-	3.0
4.0	80.0	67.1	55.4	(5.4)	(5.9)	-	-	-	4.0
5.0	56.7	56.5	53.1	47.1	40.8	(6.5)	-	-	5.0
6.0	42.1	42.0	41.8	41.6	40.8	35.8	-	(7.5)	6.0
7.0	33.4	33.2	33.0	33.0	32.9	32.9	31.7	28.4	7.0
8.0	27.6	27.4	27.3	27.2	27.1	27.0	26.9	26.1	8.0
9.0	23.4	23.2	23.1	23.0	22.9	22.8	22.7	22.6	9.0
10.0	20.3	20.1	20.0	19.9	19.8	19.7	19.6	19.5	10.0
12.0	16.0	15.8	15.6	15.5	15.4	15.3	15.2	15.1	12.0
14.0	14.9	12.9	12.7	12.6	12.5	12.4	12.3	12.2	14.0
16.0	(12.7)	11.5	10.7	10.6	10.4	10.3	10.2	10.1	16.0
18.0	-	(15.3)	9.2	9.0	8.9	8.8	8.7	8.5	18.0
20.0	-	-	(17.9)	7.9	7.7	7.6	7.5	7.3	20.0
22.0	-	-	-	7.6	6.7	6.6	6.5	6.3	22.0
24.0	-	-	-	(20.5)	6.3	5.9	5.7	5.6	24.0
26.0	-	-	-	-	(23.1)	5.3	5.1	4.9	26.0
28.0	-	-	-	-	-	(25.7)	4.5	4.4	28.0
30.0	-	-	-	-	-	-	4.5	3.9	30.0
32.0	-	-	-	-	-	-	(28.3)	3.7	32.0
34.0	-	-	-	-	-	-	-	(30.9)	34.0

	37.0m	40.0m	43.0m	46.0m	49.0m	52.0m	55.0m	58.0m	
	t	t	t	t	t	t	t	t	
7.0	-	(8.5m)	-	-	-	-	-	-	7.0
8.0	25.6	23.3	(9.1m)	(9.6m)	-	-	-	-	8.0
9.0	22.5	22.2	21.2	19.3	(10.1m)	(10.6m)	(11.1m)	(11.7m)	9.0
10.0	19.4	19.3	19.1	18.4	17.7	14.7	11.7	8.9	10.0
12.0	15.0	14.9	14.7	14.6	14.6	14.5	11.5	8.8	12.0
14.0	12.1	12.0	11.8	11.7	11.7	11.5	11.4	8.4	14.0
16.0	10.0	9.9	9.7	9.6	9.6	9.4	9.3	8.0	16.0
18.0	8.5	8.0	8.2	8.0	8.0	7.9	7.7	7.6	18.0
20.0	7.2	7.1	6.9	6.8	6.8	6.6	6.5	6.4	20.0
22.0	6.3	6.1	6.0	5.9	5.8	5.7	5.5	5.4	22.0
24.0	5.5	5.3	5.2	5.1	5.0	4.9	4.7	4.6	24.0
26.0	4.8	4.7	4.5	4.4	4.3	4.2	4.1	3.9	26.0
28.0	4.3	4.1	4.0	3.8	3.8	3.6	3.5	3.4	28.0
30.0	3.8	3.7	3.5	3.4	3.3	3.2	3.0	2.9	30.0
32.0	3.4	3.3	3.1	3.0	2.9	2.8	2.6	2.5	32.0
34.0	3.2	2.9	2.7	2.6	2.5	2.4	2.3	2.1	34.0
36.0	(33.5)	2.6	2.4	2.3	2.2	2.1	2.0	1.8	36.0
38.0	-	2.6	2.2	2.0	1.9	1.8	1.6	1.5	38.0
40.0	-	(36.1)	2.1	1.8	1.7	1.5	1.4	1.2	40.0
42.0	-	-	(38.7)	-	-	-	-	-	42.0

Values in brackets () below or above load capacity, indicate exact radius. / Les valeurs entre parenthèses () notées au-dessus ou en-dessous des capacités, indiquent les portées exactes (pour les dernières). / Die Werten in Klammern unten oder oben den Tragfähigkeiten bedeuten die genaue Ausladung. / Waarden tussen haakjes () onder of boven capaciteiten geven de exacte radius aan

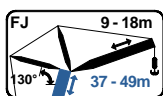


HITACHI KH 300-3

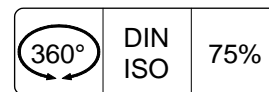
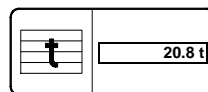
80 TON

Lifting capacities
Capacités à la flèche

Tragfähigkeiten
Capaciteiten



FJ (30°)



m	↕ 37.0m			↕ 40.0m			↕ 43.0m			↕ 46.0m			↕ 49.0m			m
	9.0m	13.5m	18.0m	9.0m	13.5m	18.0m	9.0m	13.5m	18.0m	9.0m	13.5m	18.0m	9.0m	13.5m	18.0m	
7.0	-	-	-	-	-	-	-	-	-	-	-	-	-	-	-	7.0
8.0	-	-	-	-	-	-	-	-	-	-	-	-	-	-	-	8.0
9.0	-	-	-	-	-	-	-	-	-	-	-	-	-	-	-	9.0
10.0	(13.5)	-	-	-	-	-	-	-	-	-	-	-	-	-	-	10.0
12.0	9.3	-	-	-	-	-	(14.5)	-	-	(15.0)	-	-	(15.5)	-	-	12.0
14.0	9.3	(16.5)	-	9.3	(17.0)	-	9.3	(17.5)	-	9.2	-	-	8.7	-	-	14.0
16.0	8.6	5.7	(19.5)	8.5	5.7	-	8.3	5.7	-	8.2	-	-	8.2	(18.5)	-	16.0
18.0	7.1	5.7	3.9	6.6	5.7	-	6.8	5.7	(20.5)	6.6	5.7	(21.0)	6.6	5.7	-	18.0
20.0	5.8	5.5	3.9	5.7	5.4	3.9	5.5	5.2	3.9	5.4	5.1	3.9	5.4	5.1	-	20.0
22.0	4.9	4.6	3.9	4.7	4.4	3.9	4.6	4.3	3.9	4.5	4.2	3.9	4.4	4.1	3.8	22.0
24.0	4.1	3.8	3.5	3.9	3.6	3.3	3.8	3.5	3.2	3.7	3.4	3.1	3.6	3.3	3.0	24.0
26.0	3.4	3.1	2.8	3.3	3.0	2.7	3.1	2.8	2.5	3.0	2.7	2.4	2.9	2.6	2.3	26.0
28.0	2.9	2.6	2.3	2.7	2.4	2.1	2.6	2.3	2.0	2.4	2.1	1.8	2.4	2.1	1.8	28.0
30.0	2.4	2.1	1.8	2.3	2.0	1.7	2.1	1.8	1.5	2.0	1.7	1.4	1.9	1.6	1.3	30.0
32.0	2.0	1.7	1.4	1.9	1.6	1.3	1.7	1.4	1.1	1.6	1.3	1.0	1.5	1.2	0.9	32.0
34.0	1.8	1.5	1.2	1.5	1.2	0.9	1.3	1.0	0.7	1.2	0.9	0.6	1.1	0.8	0.5	34.0
36.0	(33.5)	(33.5)	(33.5)	1.2	0.9	0.6	1.0	0.7	0.4	0.9	0.6	0.3	0.8	0.5	0.2	36.0
38.0	-	-	-	1.2	0.9	0.6	0.8	0.5	0.2	0.6	0.3	-	0.5	0.2	-	38.0
40.0	-	-	-	(36.1)	(36.1)	(36.1)	0.7	0.4	0.1	0.4	0.1	-	0.3	-	-	40.0
42.0	-	-	-	-	-	-	(38.7)	(38.7)	(38.7)	-	-	-	-	-	-	42.0

Values in brackets () below or above load capacity, indicate exact radius. / Les valeurs entre parenthèses () notées au-dessus ou en-dessous des capacités, indiquent les portées exactes (pour les dernières). / Die Werten in Klammern unten oder oben den Tragfähigkeiten bedeuten die genaue Ausladung. / Waarden tussen haakjes () onder of boven capaciteiten geven de exacte radius aan

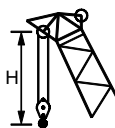
Working Speeds

Vitesses de travail

Arbeitsgeschwindigkeiten

Werknelheden

Drives Mécanismes Antriebe Aandrijvingen	Mode Mode Zuordnung Uitvoering	Speeds Vitesses Geschwindigkeiten Snelheden	Rope diameter Diamètre du câble Seildurchmesser Kabeldiameter	Max. single line pull Effort au brin maxi. Max. Seilzug Max. trekkracht per part	Rope length Longueur du câble Länge der seile Kabellänge
	Main hoist No.1 Levage sur flèche No.1 Hubwerk 1 Hijslier 1	0 – 60 m/min	26 mm	147 kN	190 m
	Main hoist No.2 Levage sur flèche No.2 Hubwerk 2 Hijslier 2	0 – 60 m/min	26 mm	147 kN	190 m
	Derricking main boom Relevage flèche principale Verstellung Hauptausleger Toplier hoofdgiëk	0 – 60 m/min	26 mm	147 kN	170 m
	Slew gear Orientation Drehwerk Zwenkwerk	0 – 3 Rev./min			
	Travel speed Vitesse de rangée Fahrgeschwindigkeit Rijsnelheid	0 – 1.4 km/h			



Hook block/Crane hook

Crochet mouflé/Crochet simple

Unterflasche/Hakengehänge

Kraanblok/Kraanhaak

Capacity Capacité Tragfähigkeit Capaciteit	Number of sheaves Nombre de poulies Anzahl der Rollen Aantal schijven	Number of lines Nombre de brins Strangzahl Aantal parten	Weight Poids Gewicht Gewicht	"H"
SWL 80 t	4	8	964 kg	3.2 m
SWL 32 t	1	3	400 kg	3.2 m
SWL 10 t	-	-	320 kg	3.2 m