

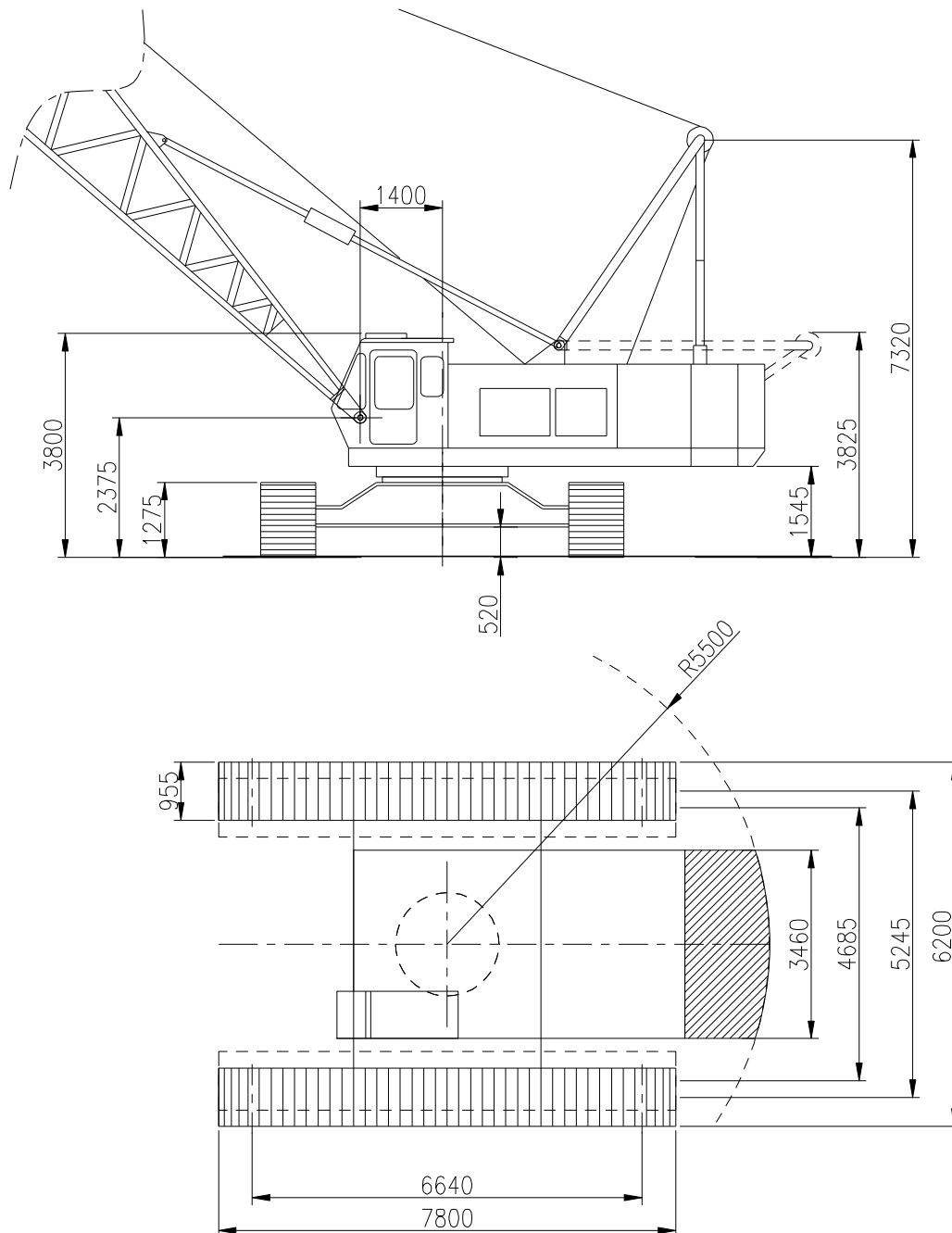


sarens
group

www.sarens.com

HITACHI KH 500-3

110 TON





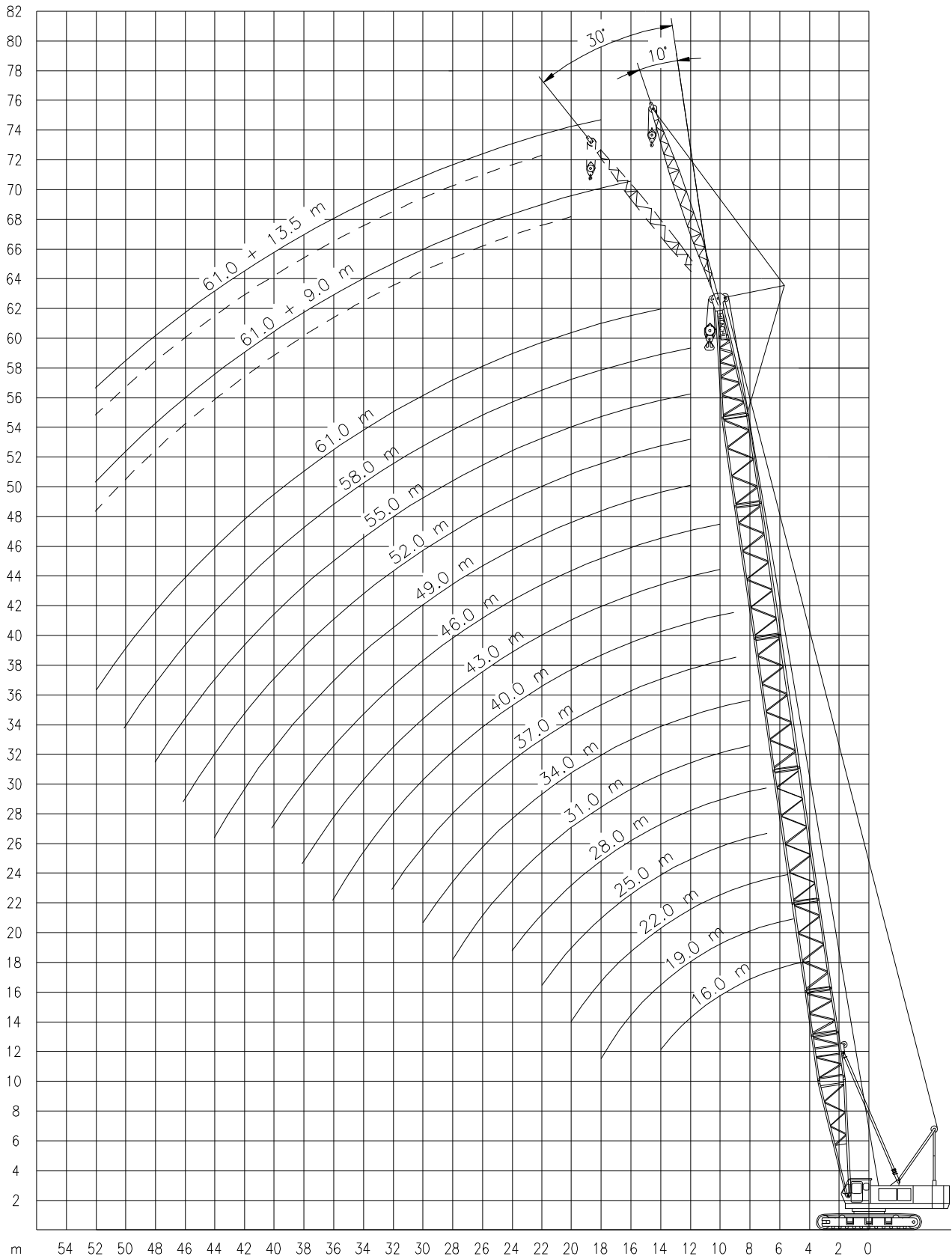
HITACHI KH 500-3

110 TON

Working ranges main boom and fixed fly jib
Portées de la flèche principale et fléchette fixe

Arbeitsbereiche Haupt- und Hilfsausleger
Werkbereich van de hoofd- en hulpgiek

MB/FJ



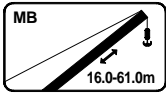


HITACHI KH 500-3

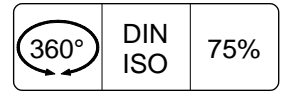
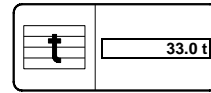
110 TON

Lifting capacities at main boom
Capacités à la flèche principale

Tragfähigkeiten am Hauptausleger
Capaciteiten aan de hoofdgiel



MB



	16.0m	19.0m	22.0m	25.0m	28.0m	31.0m	34.0m	37.0m	
	t	t	t	t	t	t	t	t	
4.0	110.0	-	-	-	-	-	-	-	4.0
4.5	100.0	-	-	-	-	-	-	-	4.5
5.0	100.0	-	-	-	-	-	-	-	5.0
5.5	99.9	93.5	-	-	-	-	-	-	5.5
6.0	89.6	84.8	80.5	-	-	-	-	-	6.0
7.0	72.1	70.5	67.4	64.6	61.9	-	-	-	7.0
8.0	58.2	58.2	57.9	55.7	53.6	51.7	49.8	-	8.0
9.0	48.7	48.7	48.6	48.6	47.2	45.7	44.1	42.7	9.0
10.0	41.8	41.8	41.7	41.6	41.5	40.8	39.6	38.4	10.0
12.0	32.4	26.3	32.3	32.2	32.0	31.9	31.8	31.6	12.0
14.0	26.4	22.1	26.2	26.1	25.9	25.8	25.7	25.5	14.0
16.0	-	18.6	21.9	21.8	21.7	21.5	21.4	21.3	16.0
18.0	-	-	18.8	18.7	18.5	18.4	18.2	18.1	18.0
20.0	-	-	16.4	16.3	16.1	16.0	15.8	15.7	20.0
22.0	-	-	-	14.4	14.2	14.1	13.9	13.7	22.0
24.0	-	-	-	-	12.6	12.5	12.3	12.2	24.0
26.0	-	-	-	-	-	11.2	11.0	10.9	26.0
28.0	-	-	-	-	-	10.1	10.0	9.8	28.0
30.0	-	-	-	-	-	-	9.0	8.9	30.0
32.0	-	-	-	-	-	-	-	8.1	32.0

	40.0m	43.0m	46.0m	49.0m	52.0m	55.0m	58.0m	61.0m	
	t	t	t	t	t	t	t	t	
9.0	41.4	-	-	-	-	-	-	-	9.0
10.0	37.2	36.1	31.7	-	-	-	-	-	10.0
12.0	30.8	29.9	29.1	26.6	22.2	19.1	16.5	-	12.0
14.0	25.4	25.2	24.8	24.1	20.9	18.0	15.5	13.5	14.0
16.0	21.1	21.0	20.8	20.7	19.9	17.4	15.1	12.8	16.0
18.0	18.0	17.8	17.7	17.5	17.4	16.9	14.2	11.9	18.0
20.0	15.5	15.4	15.2	15.1	14.9	14.8	13.5	11.3	20.0
22.0	13.6	13.4	13.3	13.2	13.0	12.9	12.7	10.7	22.0
24.0	12.0	11.9	11.7	11.6	11.4	11.3	11.1	10.1	24.0
26.0	10.8	10.6	10.6	10.3	10.1	10.0	9.8	9.3	26.0
28.0	9.7	9.5	9.4	9.2	9.0	8.9	8.7	8.6	28.0
30.0	8.8	8.6	8.4	8.3	8.1	8.0	7.8	7.6	30.0
32.0	8.0	7.8	7.6	7.5	7.3	7.2	7.0	6.8	32.0
34.0	7.3	7.1	6.9	6.8	6.6	6.5	6.3	6.1	34.0
36.0	6.7	6.5	6.3	6.2	6.0	5.8	5.7	5.5	36.0
38.0	-	5.9	5.8	5.6	5.5	5.3	5.2	5.0	38.0
40.0	-	-	5.3	5.2	5.0	4.8	4.7	4.5	40.0
42.0	-	-	-	4.7	4.5	4.4	4.2	4.1	42.0
44.0	-	-	-	4.4	4.2	4.0	3.9	3.7	44.0
46.0	-	-	-	-	3.8	3.7	3.5	3.3	46.0
48.0	-	-	-	-	-	3.4	3.1	2.9	48.0
50.0	-	-	-	-	-	-	2.8	2.5	50.0
52.0	-	-	-	-	-	-	-	2.2	52.0
54.0	-	-	-	-	-	-	-	1.9	54.0

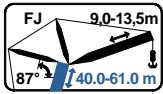


HITACHI KH 500-3

110 TON

Lifting capacities at fixed fly jib
Capacités à la fléchette fixe

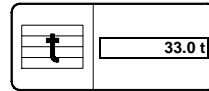
Tragfähigkeiten am starrer Hilfsausleger
Capaciteiten aan de vaste hulpgiëk



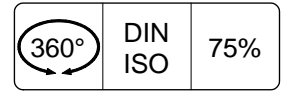
FJ



5.25m



33.0 t



360°

DIN
ISO

75%

m	↕ 40.0m				↕ 43.0m				↕ 46.0m				↕ 49.0m				m	
	9.0m		13.5m		9.0m		13.5m		9.0m		13.5m		9.0m		13.5m			
	10°	30°	10°	30°	10°	30°	10°	30°	10°	30°	10°	30°	10°	30°	10°	30°		
	t	t	t	t	t	t	t	t	t	t	t	t	t	t	t	t	t	
12.0	10.0	-	-	-	-	-	-	-	-	-	-	-	-	-	-	-	-	12.0
14.0	10.0	-	-	10.0	-	10.0	-	10.0	-	10.0	-	10.0	-	10.0	-	10.0	-	14.0
16.0	10.0	9.3	10.0	-	10.0	9.3	10.0	-	10.0	9.3	10.0	-	10.0	-	10.0	-	16.0	
18.0	10.0	9.3	10.0	5.7	10.0	9.3	10.0	5.7	10.0	9.3	10.0	5.7	10.0	9.3	10.0	5.7	18.0	
20.0	10.0	9.3	10.0	5.7	10.0	9.3	10.0	5.7	10.0	9.3	10.0	5.7	10.0	9.3	10.0	5.7	20.0	
22.0	10.0	9.3	10.0	5.7	10.0	9.3	10.0	5.7	10.0	9.3	10.0	5.7	10.0	9.3	10.0	5.7	22.0	
24.0	10.0	9.3	10.0	5.7	10.0	9.3	10.0	5.7	10.0	9.3	10.0	5.7	10.0	9.3	10.0	5.7	24.0	
26.0	10.0	9.3	10.0	5.7	10.0	9.3	10.0	5.7	10.0	9.3	10.0	5.7	10.0	9.3	10.0	5.7	26.0	
28.0	9.7	9.3	9.7	5.7	9.5	9.3	9.5	5.7	9.4	9.3	9.4	5.7	9.2	9.2	9.2	5.7	28.0	
30.0	8.0	8.8	8.0	5.7	8.6	8.6	8.6	5.7	8.4	8.4	8.4	5.7	8.3	8.3	8.3	5.7	30.0	
32.0	8.0	8.0	8.0	5.7	7.8	7.8	7.8	5.7	7.6	7.6	7.6	5.7	7.5	7.5	7.5	5.7	32.0	
34.0	7.3	7.3	7.3	5.7	7.1	7.1	7.1	5.7	6.9	6.9	6.9	5.7	6.8	6.8	6.8	5.7	34.0	
36.0	6.7	6.7	6.7	5.7	6.5	6.5	6.5	5.7	6.3	6.3	6.3	5.7	6.2	6.2	6.2	5.7	36.0	
38.0	-	-	-	-	5.9	5.9	5.9	5.7	5.8	5.8	5.8	5.7	5.6	5.6	5.6	5.6	38.0	
40.0	-	-	-	-	-	-	-	-	5.3	5.3	5.3	5.3	5.2	5.2	5.2	5.2	40.0	
42.0	-	-	-	-	-	-	-	-	-	-	-	-	4.7	4.7	4.7	4.7	42.0	
44.0	-	-	-	-	-	-	-	-	-	-	-	-	4.4	4.4	4.4	4.4	44.0	

m	↕ 52.0m				↕ 55.0m				↕ 58.0m				↕ 61.0m				m	
	9.0m		13.5m		9.0m		13.5m		9.0m		13.5m		9.0m		13.5m			
	10°	30°	10°	30°	10°	30°	10°	30°	10°	30°	10°	30°	10°	30°	10°	30°		
	t	t	t	t	t	t	t	t	t	t	t	t	t	t	t	t	t	
12.0	-	-	-	-	-	-	-	-	-	-	-	-	-	-	-	-	-	12.0
14.0	10.0	-	-	-	-	-	-	-	-	-	-	-	-	-	-	-	-	14.0
16.0	10.0	-	10.0	-	10.0	-	10.0	-	10.0	-	10.0	-	10.0	-	10.0	-	16.0	
18.0	10.0	9.3	10.0	-	10.0	9.3	10.0	-	10.0	9.3	10.0	-	10.0	-	10.0	-	18.0	
20.0	10.0	9.3	10.0	5.7	10.0	9.3	10.0	5.7	10.0	9.3	10.0	5.7	10.0	9.3	10.0	5.7	20.0	
22.0	10.0	9.3	10.0	5.7	10.0	9.3	10.0	5.7	10.0	9.3	10.0	5.7	10.0	9.3	10.0	5.7	22.0	
24.0	10.0	9.3	10.0	5.7	10.0	9.3	10.0	5.7	10.0	9.3	10.0	5.7	10.0	9.3	10.0	5.7	24.0	
26.0	10.0	9.3	10.0	5.7	10.0	9.3	10.0	5.7	9.8	9.3	9.8	5.7	9.3	9.3	9.3	5.7	26.0	
28.0	9.0	9.0	9.0	5.7	8.9	8.9	8.9	5.7	8.7	8.7	8.7	5.7	8.6	8.6	8.6	5.7	28.0	
30.0	8.1	8.1	8.1	5.7	8.0	8.0	8.0	5.7	7.8	7.8	7.8	5.7	7.6	7.6	7.6	5.7	30.0	
32.0	7.3	7.3	7.3	5.7	7.2	7.2	7.2	5.7	7.0	7.0	7.0	5.7	6.8	6.8	6.8	5.7	32.0	
34.0	6.6	6.6	6.6	5.7	6.5	6.5	6.5	5.7	6.3	6.3	6.3	5.7	6.1	6.1	6.1	5.7	34.0	
36.0	6.0	6.0	6.0	5.7	5.9	5.9	5.9	5.7	5.7	5.7	5.7	5.7	5.5	5.5	5.5	5.5	36.0	
38.0	5.5	5.5	5.5	5.5	5.3	5.3	5.3	5.3	5.2	5.2	5.2	5.2	5.0	5.0	5.0	5.0	38.0	
40.0	5.0	5.0	5.0	5.0	4.8	4.8	4.8	4.8	4.7	4.7	4.7	4.7	4.5	4.5	4.5	4.5	40.0	
42.0	4.5	4.5	4.5	4.5	4.4	4.4	4.4	4.4	4.2	4.2	4.2	4.2	4.1	4.1	4.1	4.1	42.0	
44.0	4.2	4.2	4.2	4.2	4.0	4.0	4.0	4.0	3.9	3.9	3.9	3.9	3.7	3.7	3.7	3.7	44.0	
46.0	3.8	3.8	3.8	3.8	3.7	3.7	3.7	3.7	3.5	3.5	3.5	3.5	3.3	3.3	3.3	3.3	46.0	
48.0	-	-	-	-	3.4	3.4	3.4	3.4	3.1	3.1	3.1	3.1	2.9	2.9	2.9	2.9	48.0	
50.0	-	-	-	-	-	-	-	-	2.8	2.8	2.8	2.8	2.5	2.5	2.5	2.5	50.0	
52.0	-	-	-	-	-	-	-	-	-	-	-	-	2.2	2.2	2.2	2.2	52.0	
54.0	-	-	-	-	-	-	-	-	-	-	-	-	1.9	1.9	1.9	1.9	54.0	



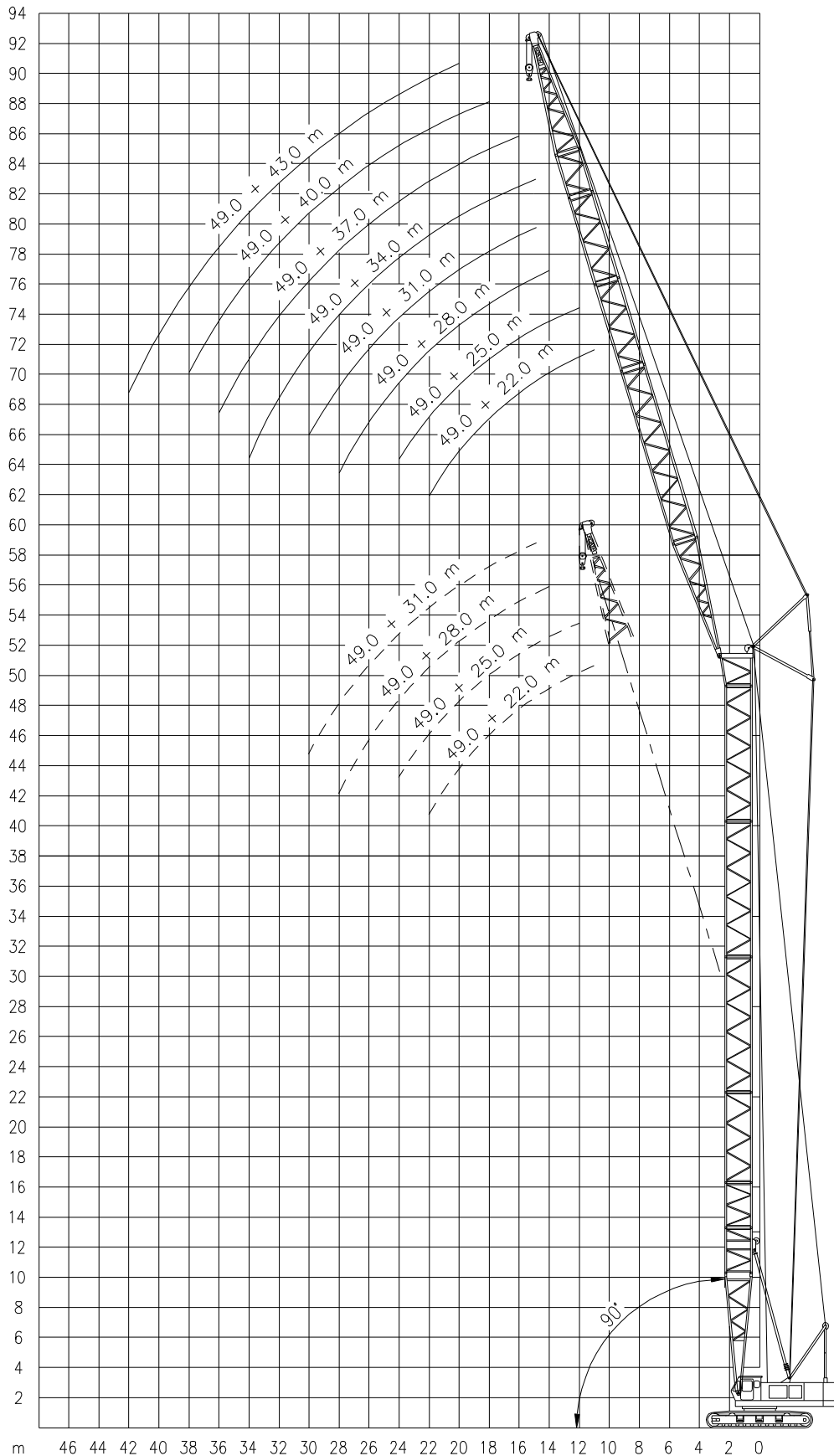
HITACHI KH 500-3

110 TON

Working ranges of luffing fly jib
Portées de la volée variable

Arbeitsbereiche mit wippbarem Hilfsausleger
Werkbereich van de beweegbare hulpgiel

LJ 90°



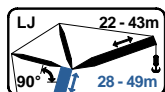


HITACHI KH 500-3

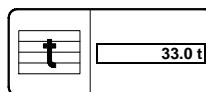
110 TON

Lifting capacities at luffing fly jib
Capacités à la volée variable

Tragfähigkeiten an wippbarem Hilfsausleger
Capaciteiten aan de beweegbare hulpgiel



LJ (90°)



		↕ 28.0-37.0m					
		22.0m	25.0m	28.0m	31.0m		
		t	t	t	t		
11		20.0	-	-	-	11	
12		20.0	18.6	-	-	12	
13		20.0	18.6	-	-	13	
14		20.0	18.6	15.0	-	14	
15		17.1	17.0	15.0	13.5	15	
16		15.6	15.6	15.0	13.5	16	
18		13.5	13.5	13.5	13.5	18	
20		11.9	11.9	11.9	11.9	20	
22		10.6	10.6	10.6	10.6	22	
24		-	9.6	9.6	9.6	24	
26		-	-	8.7	8.7	26	
28		-	-	8.0	8.0	28	
30		-	-	-	7.3	30	

		↕ 40.0-46.0m								
		22.0m	25.0m	28.0m	31.0m	34.0m	37.0m	40.0m		
		t	t	t	t	t	t	t		
11		17.3	-	-	-	-	-	-	11	
12		17.3	15.6	-	-	-	-	-	12	
13		17.3	15.6	-	-	-	-	-	13	
14		16.3	15.6	14.1	-	-	-	-	14	
15		15.5	15.0	14.1	12.6	12.1	-	-	15	
16		14.6	14.4	14.1	12.6	12.1	10.9	-	16	
18		13.5	13.5	13.5	12.6	12.1	10.9	9.8	18	
20		11.9	11.9	11.9	11.6	11.2	10.9	9.8	20	
22		10.6	10.6	10.6	10.6	10.4	10.1	9.8	22	
24		-	9.6	9.6	9.6	9.6	9.4	9.2	24	
26		-	-	8.7	8.7	8.7	8.7	8.6	26	
28		-	-	8.0	8.0	8.0	8.0	8.0	28	
30		-	-	-	7.3	7.3	7.3	7.3	30	
32		-	-	-	-	6.7	6.7	6.7	32	
34		-	-	-	-	6.1	6.1	6.1	34	
36		-	-	-	-	-	5.5	5.2	36	
38		-	-	-	-	-	-	4.5	38	

		↕ 49.0m									
		22.0m	25.0m	28.0m	31.0m	34.0m	37.0m	40.0m	43.0m		
		t	t	t	t	t	t	t	t		
11		15.0	-	-	-	-	-	-	-	11	
12		15.0	13.8	-	-	-	-	-	-	12	
13		15.0	13.8	-	-	-	-	-	-	13	
14		14.2	13.8	12.1	-	-	-	-	-	14	
15		13.5	13.1	12.1	10.9	10.4	-	-	-	15	
16		12.8	12.5	12.1	10.9	10.4	9.3	-	-	16	
18		11.6	11.4	11.1	10.9	10.4	9.3	8.5	-	18	
20		10.5	10.4	10.2	10.0	9.6	9.3	8.5	7.6	20	
22		9.5	9.5	9.4	9.3	8.9	8.6	8.5	7.6	22	
24		-	8.5	8.5	8.5	8.2	8.0	7.8	7.6	24	
26		-	-	7.9	7.9	7.6	7.4	7.1	7.1	26	
28		-	-	7.2	7.2	7.0	6.8	6.5	6.5	28	
30		-	-	-	6.6	6.4	6.1	5.9	5.9	30	
32		-	-	-	-	5.8	5.5	5.3	5.3	32	
34		-	-	-	-	5.2	5.0	4.8	4.7	34	
36		-	-	-	-	-	4.5	4.2	4.2	36	
38		-	-	-	-	-	-	3.8	3.7	38	
40		-	-	-	-	-	-	-	3.3	40	
42		-	-	-	-	-	-	-	3.0	42	



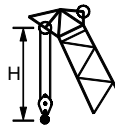
Working Speeds

Vitesses de travail

Arbeitsgeschwindigkeiten

Werkssnelheden

Drives Mécanismes Antriebe Aandrijvingen	Mode Mode Zuordnung Uitvoering	Speeds Vitesses Geschwindigkeiten Snelheden	Rope diameter Diamètre du câble Seildurchmesser Kabeldiameter	Max. single line pull Effort au brin maxi. Max. Seilzug Max. trekkracht per part	Rope length Longueur du câble Lange der seile Kabellengte
	Main hoist No.1 Levage sur flèche No.1 Hubwerk 1 Hijslier 1	0 – 65 m/min	28 mm	125 kN	260 m
	Main hoist No.2 Levage sur flèche No.2 Hubwerk 2 Hijslier 2	0 – 65 m/min	28 mm	125 kN	200 m
	Derricking main boom Relevage flèche principale Verstellung Hauptausleger Toplier hoofdgiëk	0 – 52 m/min	22 mm	-	200 m
	Slewing gear Orientation Drehwerk Zwenkwerk	0 – 2.3 Rev./min			
	Travel speed Vitesse de rangée Fahrgeschwindigkeit Rijsnelheid	0 – 1.3 km/h			



Hook block/Crane hook

Crochet mouflé/Crochet simple

Unterflasche/Hakengehänge

Kraanblok/Kraanhaak

Capacity Capacité Tragfähigkeit Capaciteit	Number of sheaves Nombre de poulies Anzahl der Rollen Aantal schijven	Number of lines Nombre de brins Strangzahl Aantal parten	Weight Poids Gewicht Gewicht	"H"
SWL 25 t	1	3	750kg	2.5 m



HITACHI KH 500-3

110 TON
