

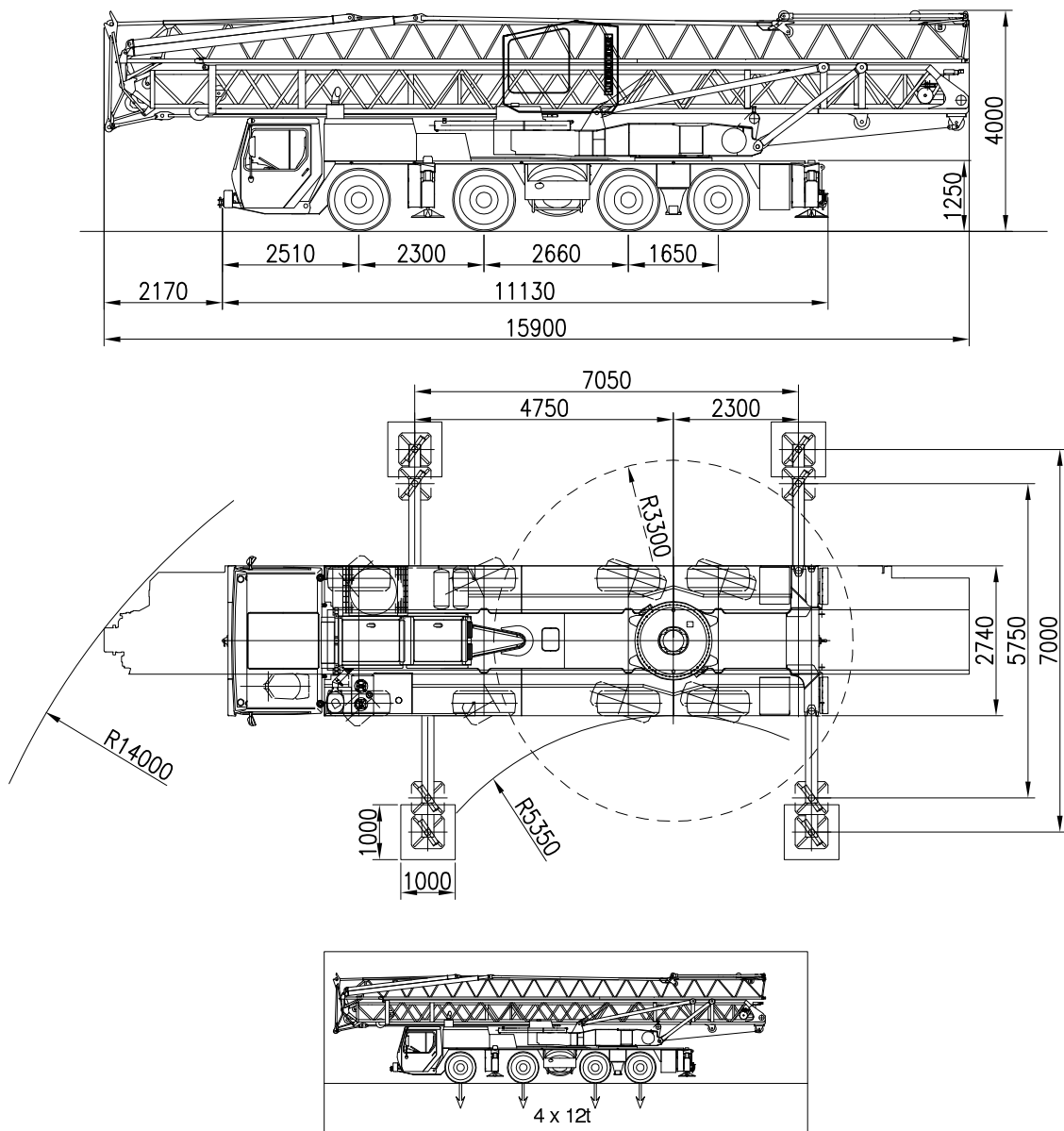


sarens
group

www.sarens.com

LIEBHERR MK80

42 METER



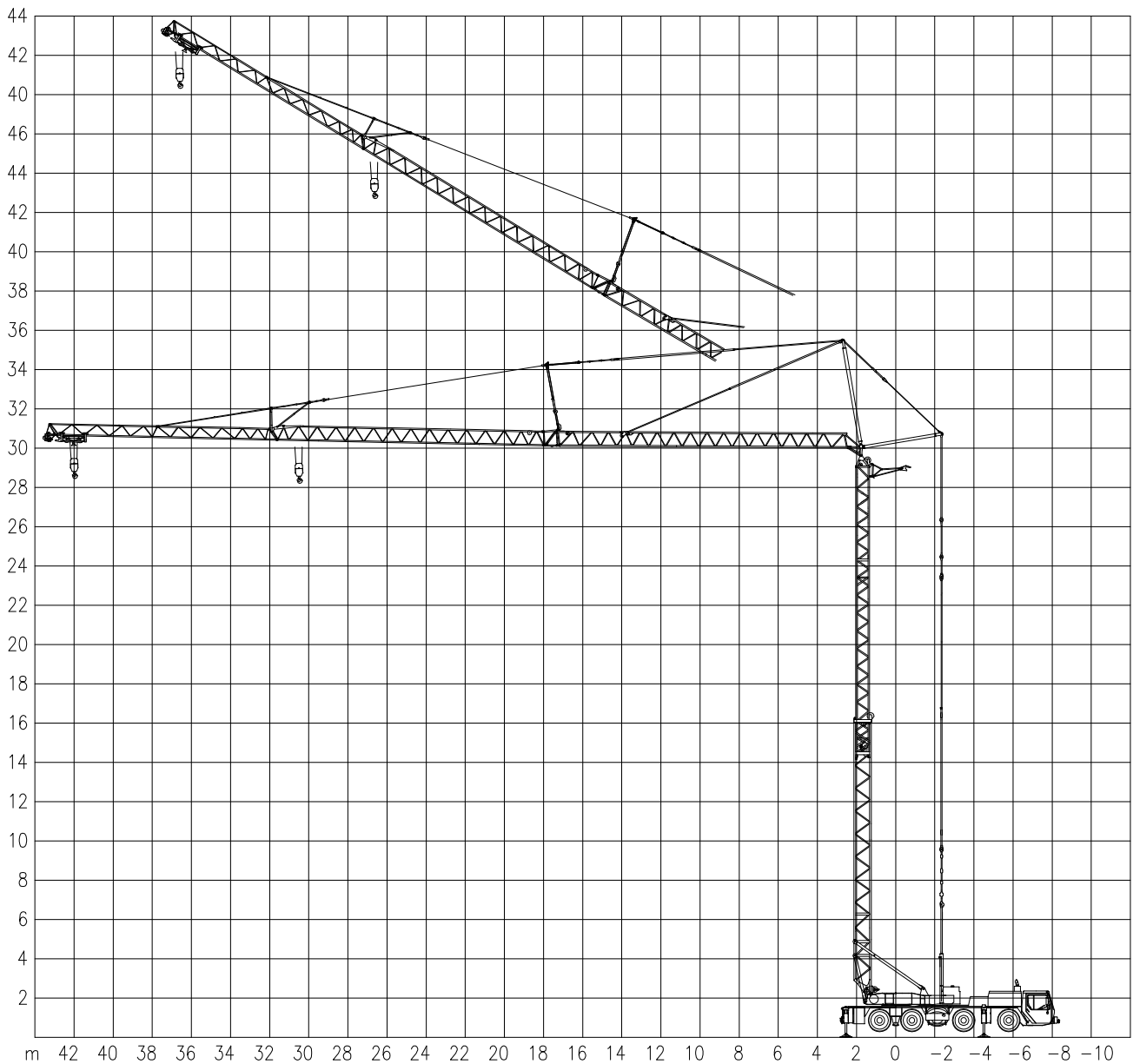


LIEBHERR MK80

Working ranges
Portées

42 METER

Arbeitsbereiche
Werkbereich



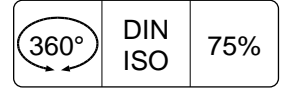
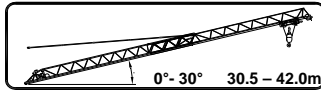


LIEBHERR MK80

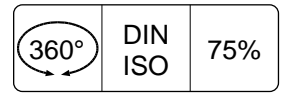
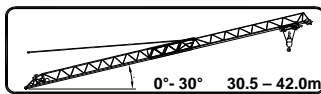
42 METER

Lifting capacities at main boom (hook block included, excl. lifting mat.)
Capacités à la flèche principale

Tragfähigkeiten am Hauptausleger
Capaciteiten aan de hoofdgiëk



	30.5m		42.0m		
	0°	30°	0°	30°	
	t	t	t	t	
3	8.00	6.00	8.00	6.00	3
4	8.00	6.00	8.00	6.00	4
6	8.00	6.00	8.00	6.00	6
8	8.00	6.00	8.00	6.00	8
10	8.00	6.00	8.00	5.20	10
12	7.76	6.00	6.87	4.58	12
14	6.62	5.25	5.85	4.08	14
16	5.75	4.66	5.08	3.67	16
18	5.08	4.18	4.48	3.33	18
20	4.54	3.87	3.99	3.04	20
22	4.09	3.45	3.60	2.80	22
24	3.72	3.16	3.27	2.58	24
26	3.41	2.92	2.99	2.40	26
28	3.13	2.85	2.74	2.23	28
30	2.90	(26.65)	2.54	2.08	30
32	2.85	-	2.35	1.95	32
34	(30.5)	-	2.19	1.83	34
36	-	-	2.05	1.73	36
38	-	-	1.92	1.70	38
40	-	-	1.80	(36.6)	40
42	-	-	1.70	-	42



	30.5m		42.0m		
	0°	30°	0°	30°	
	t	t	t	T	
3	8.00	6.00	8.00	6.00	3
4	8.00	6.00	8.00	6.00	4
6	8.00	6.00	8.00	6.00	6
8	8.00	6.00	8.00	6.00	8
10	8.00	6.00	7.49	4.89	10
12	6.77	6.00	5.94	4.12	12
14	5.60	4.91	4.90	3.53	14
16	4.75	4.13	4.15	3.09	16
18	4.12	3.55	3.59	2.73	18
20	3.62	3.11	3.15	2.44	20
22	3.22	2.75	2.80	2.20	22
24	2.89	2.46	2.51	1.99	24
26	2.62	2.22	2.26	1.82	26
28	2.39	2.15	2.06	1.67	28
30	2.19	(26.65)	1.88	1.53	30
32	2.15	-	1.73	1.42	32
34	(30.5)	-	1.60	1.31	34
36	-	-	1.48	1.22	36
38	-	-	1.37	1.20	38
40	-	-	1.28	(36.6)	40
42	-	-	1.20	-	42

Values in brackets () below or above load capacity, indicate exact radius. / Les valeurs entre parenthèses () notées au-dessus ou en-dessous des capacités, indiquent les portées exactes (pour les dernières). / Die Werten in Klammern unten oder oben den Tragfähigkeiten bedeuten die genaue Ausladung. / Waarden tussen haakjes () onder of boven capaciteiten geven de exacte radius aan.



LIEBHERR MK80

Erection procedure
Déroulement de montage

42 METER

Aufstellvorgang
Opstellingsprocedure

