

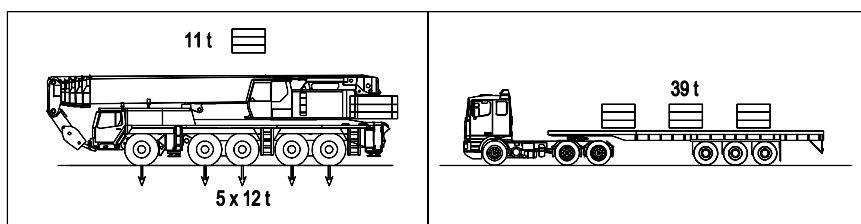
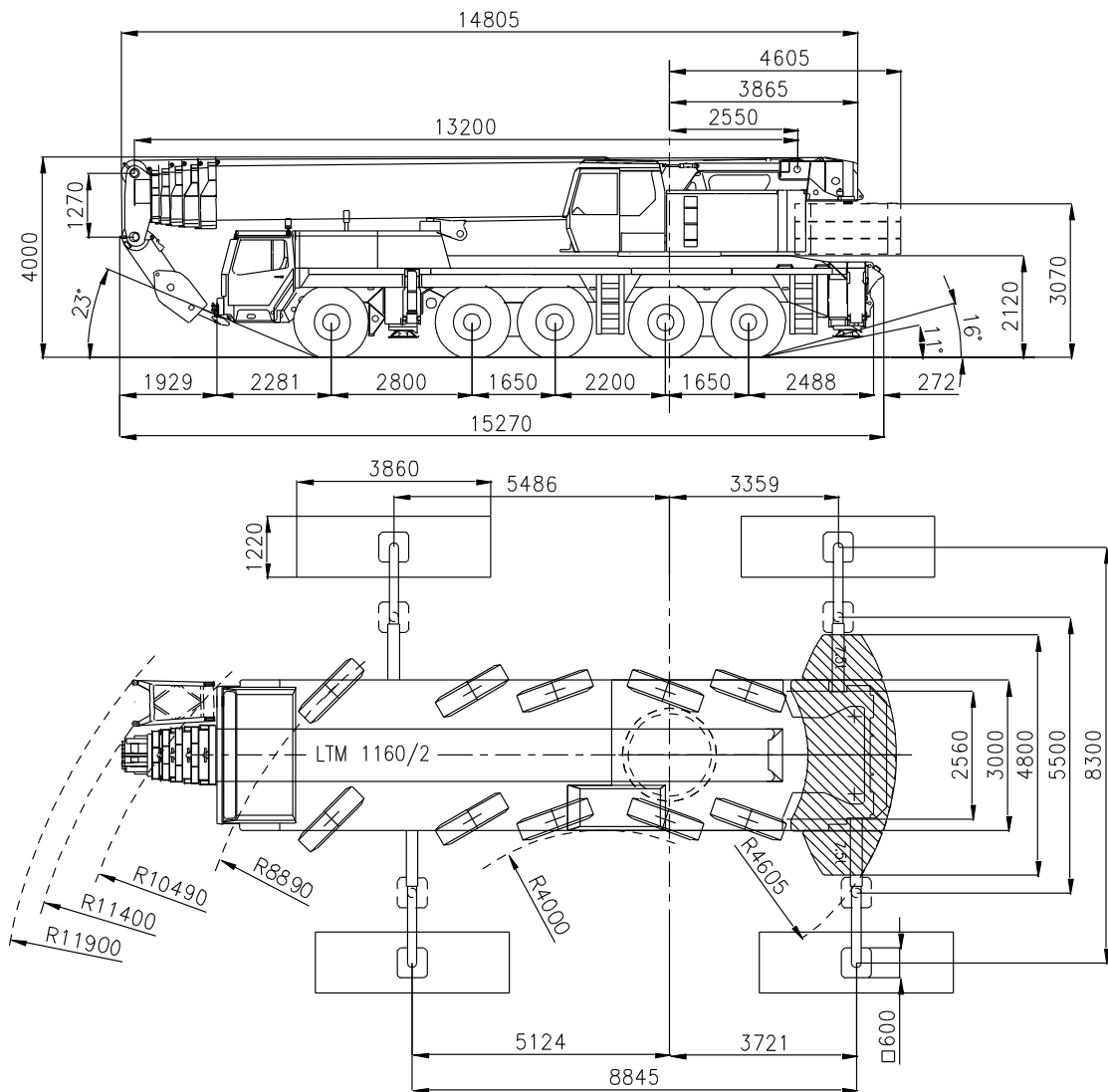


sarens
group

www.sarens.com

LIEBHERR LTM 1160/2

160 TON





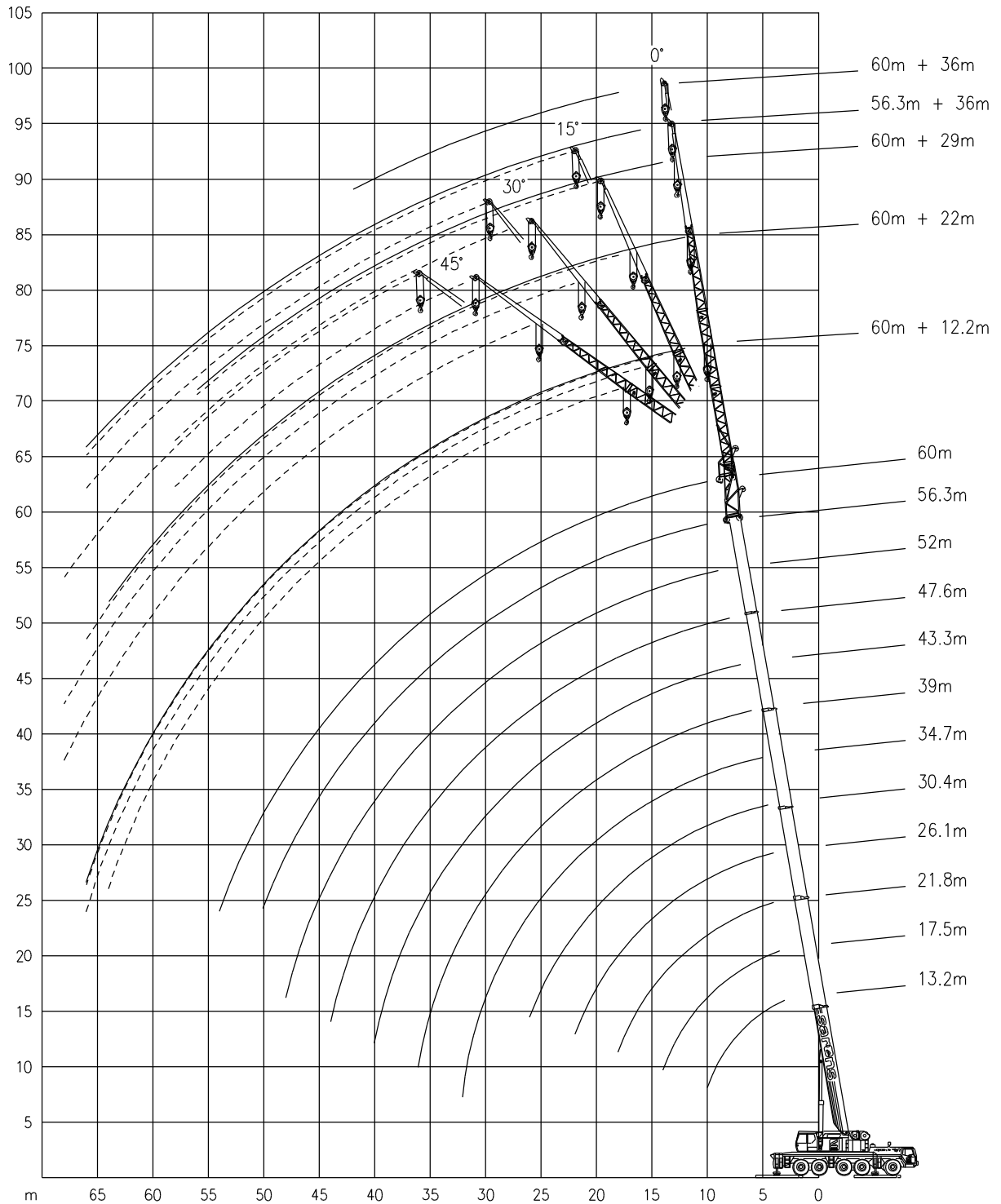
LIEBHERR LTM 1160/2

Working ranges
Portées

160 TON

Arbeitsbereiche
Werkbereich

T/TK



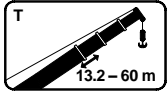


LIEBHERR LTM 1160/2

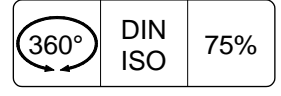
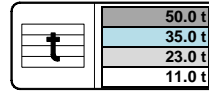
160 TON

Lifting capacities at main boom (excl.hook block etc.)
Capacités à la flèche principale

Tragfähigkeiten am Hauptausleger
Capaciteiten aan de hoofdgiel



T



	13.2m	17.5m	21.8m	26.1m	30.4m	34.7m	39.0m	43.3m	47.6m	52.0m	56.3m	60m	
	t	t	t	t	t	t	t	t	t	t	t	t	
3	130.0	-	-	-	-	-	-	-	-	-	-	-	3
3,5	122.0	115.0	-	-	-	-	-	-	-	-	-	-	3,5
4	112.0	104.0	98.0	86.0	-	-	-	-	-	-	-	-	4
4,5	103.0	96.0	89.0	81.0	70.0	-	-	-	-	-	-	-	4,5
5	96.0	91.0	84.0	77.0	67.0	55.0	-	-	-	-	-	-	5
6	83.0	82.0	76.0	68.0	62.0	53.0	46.0	-	-	-	-	-	6
7	73.0	73.0	70.0	61.0	56.0	49.5	43.5	37.0	-	-	-	-	7
8	65.0	64.0	63.0	56.0	51.0	46.0	41.0	35.5	30.0	-	-	-	8
9	57.0	57.0	56.0	51.0	46.0	42.5	38.5	33.5	28.9	24.4	-	-	9
10	50.0	51.0	50.0	46.5	42.0	39.5	36.0	31.5	27.6	23.5	19.5	15.0	10
11	-	46.2	45.0	43.0	39.0	36.2	33.7	29.7	26.3	22.5	19.0	14.6	11
12	-	41.5	40.0	39.5	36.0	33.0	31.5	27.9	25.1	21.6	18.5	14.3	12
14	-	34.0	33.0	32.5	31.0	28.7	27.4	25.0	22.8	19.8	17.2	13.3	14
16	-	-	27.5	26.9	27.1	25.4	24.2	22.6	20.9	18.3	15.9	12.3	16
18	-	-	23.1	22.6	22.7	23.0	21.5	20.4	19.1	16.9	14.7	11.4	18
20	-	-	-	19.1	19.2	19.7	19.4	18.5	17.4	15.7	13.6	10.5	20
22	-	-	-	16.2	16.3	16.8	17.4	16.8	15.9	14.6	12.6	9.8	22
24	-	-	-	-	14.0	14.4	15.0	15.2	14.6	13.6	11.8	9.1	24
26	-	-	-	-	12.1	12.5	13.1	13.3	13.3	12.6	11.1	8.5	26
28	-	-	-	-	-	10.9	11.5	11.6	12.1	11.6	10.4	7.8	28
30	-	-	-	-	-	9.4	10.6	10.2	10.8	10.6	9.8	7.3	30
32	-	-	-	-	-	7.8	9.9	9.0	9.6	9.7	9.3	6.8	32
34	-	-	-	-	-	-	9.1	7.9	8.5	8.7	8.8	6.3	34
36	-	-	-	-	-	-	7.5	7.2	7.5	7.8	8.2	5.9	36
38	-	-	-	-	-	-	-	6.9	6.7	7.0	7.4	5.5	38
40	-	-	-	-	-	-	-	6.7	6.0	6.6	6.6	5.0	40
42	-	-	-	-	-	-	-	-	5.7	6.2	5.9	4.6	42
44	-	-	-	-	-	-	-	-	5.6	5.9	5.3	4.3	44
46	-	-	-	-	-	-	-	-	-	5.4	4.7	3.9	46
48	-	-	-	-	-	-	-	-	-	4.9	4.2	3.6	48
50	-	-	-	-	-	-	-	-	-	-	3.7	3.4	50
52	-	-	-	-	-	-	-	-	-	-	-	3.1	52
54	-	-	-	-	-	-	-	-	-	-	-	2.9	54
56	-	-	-	-	-	-	-	-	-	-	-	-	56
58	-	-	-	-	-	-	-	-	-	-	-	-	58
60	-	-	-	-	-	-	-	-	-	-	-	-	60
62	-	-	-	-	-	-	-	-	-	-	-	-	62
64	-	-	-	-	-	-	-	-	-	-	-	-	64
66	-	-	-	-	-	-	-	-	-	-	-	-	66

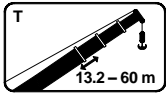


LIEBHERR LTM 1160/2

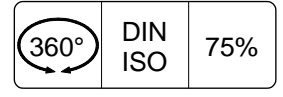
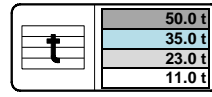
160 TON

Lifting capacities at main boom (excl.hook block etc.)
Capacités à la flèche principale

Tragfähigkeiten am Hauptausleger
Capaciteiten aan de hoofdgiel



T



	13.2m	17.5m	21.8m	26.1m	30.4m	34.7m	39.0m	43.3m	47.6m	52.0m	56.3m	60m	
	t	t	t	t	t	t	t	t	t	t	t	t	
3	109.0	-	-	-	-	-	-	-	-	-	-	-	3
3.5	107.0	100.0	-	-	-	-	-	-	-	-	-	-	3.5
4	97.0	97.0	96.0	86.0	-	-	-	-	-	-	-	-	4
4.5	89.0	89.0	88.0	81.0	70.0	-	-	-	-	-	-	-	4.5
5	82.0	82.0	81.0	77.0	67.0	55.0	-	-	-	-	-	-	5
6	71.0	70.0	69.0	68.0	62.0	53.0	46.0	-	-	-	-	-	6
7	62.0	61.0	61.0	58.0	55.0	49.5	43.5	37.0	-	-	-	-	7
8	55.0	54.0	52.0	49.0	46.5	45.0	41.0	35.5	30.0	-	-	-	8
9	47.5	47.0	45.0	42.0	40.0	39.0	38.0	33.5	28.9	24.4	-	-	9
10	41.5	41.0	39.0	36.5	35.0	34.0	33.5	31.5	27.6	23.5	19.5	15.0	10
11	-	36.7	34.8	32.4	31.2	30.5	30.1	28.8	26.3	22.5	19.0	14.6	11
12	-	32.5	29.7	28.4	27.4	27.0	26.8	26.2	25.1	21.6	18.5	14.3	12
14	-	25.7	23.3	22.7	22.0	21.8	22.0	21.5	21.7	19.8	17.2	13.3	14
16	-	-	20.9	18.0	18.1	17.9	19.5	18.1	18.2	18.0	15.9	12.3	16
18	-	-	17.7	14.9	16.2	14.9	17.4	16.4	15.4	15.4	14.7	11.4	18
20	-	-	-	13.6	14.6	12.8	15.0	14.8	13.2	13.7	13.5	10.5	20
22	-	-	-	12.6	13.2	11.6	12.8	13.1	12.2	12.7	11.7	9.8	22
24	-	-	-	-	11.4	10.6	11.0	11.4	11.2	11.2	10.2	9.1	24
26	-	-	-	-	10.0	9.7	9.6	9.9	10.3	9.9	9.0	8.5	26
28	-	-	-	-	-	9.0	8.3	8.8	9.1	8.7	7.9	7.7	28
30	-	-	-	-	-	8.0	7.2	8.0	8.0	7.8	6.9	6.8	30
32	-	-	-	-	-	7.2	6.6	7.4	7.1	6.8	6.1	5.9	32
34	-	-	-	-	-	-	6.3	6.6	6.2	6.0	5.3	5.2	34
36	-	-	-	-	-	-	6.1	5.9	5.5	5.2	4.5	4.5	36
38	-	-	-	-	-	-	-	5.3	4.8	4.6	3.9	3.8	38
40	-	-	-	-	-	-	-	4.7	4.2	4.0	3.3	3.2	40
42	-	-	-	-	-	-	-	-	3.7	3.5	2.8	2.8	42
44	-	-	-	-	-	-	-	-	3.3	3.0	2.4	2.4	44
46	-	-	-	-	-	-	-	-	-	2.6	2.0	2.0	46
48	-	-	-	-	-	-	-	-	-	2.2	1.6	1.7	48
50	-	-	-	-	-	-	-	-	-	-	1.3	1.3	50
52	-	-	-	-	-	-	-	-	-	-	-	1.0	52
54	-	-	-	-	-	-	-	-	-	-	-	-	54
56	-	-	-	-	-	-	-	-	-	-	-	-	56
58	-	-	-	-	-	-	-	-	-	-	-	-	58
60	-	-	-	-	-	-	-	-	-	-	-	-	60
62	-	-	-	-	-	-	-	-	-	-	-	-	62
64	-	-	-	-	-	-	-	-	-	-	-	-	64
66	-	-	-	-	-	-	-	-	-	-	-	-	66

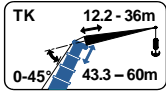


LIEBHERR LTM 1160/2

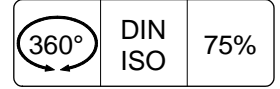
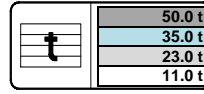
160 TON

Lifting capacities at folding jib (excl. hook block etc.)
Capacités à la fléchette pliante

Tragfähigkeiten am wippbarer Klappspitze
Capaciteiten aan de klapjib



TK



	↕ 43.3m								↕ 47.6m								↕ 52.0m								
	12.2m				22.0m				12.2m				22.0m				12.2m				22.0m				
	0°	15°	30°	45°	0°	15°	30°	45°	0°	15°	30°	45°	0°	15°	30°	45°	0°	15°	30°	45°	0°	15°	30°	45°	
2	-	-	-	-	-	-	-	-	-	-	-	-	-	-	-	-	-	-	-	-	-	-	-	-	2
3	-	-	-	-	-	-	-	-	-	-	-	-	-	-	-	-	-	-	-	-	-	-	-	-	3
4	-	-	-	-	-	-	-	-	-	-	-	-	-	-	-	-	-	-	-	-	-	-	-	-	4
5	-	-	-	-	-	-	-	-	-	-	-	-	-	-	-	-	-	-	-	-	-	-	-	-	5
6	-	-	-	-	-	-	-	-	-	-	-	-	-	-	-	-	-	-	-	-	-	-	-	-	6
7	-	-	-	-	-	-	-	-	-	-	-	-	-	-	-	-	-	-	-	-	-	-	-	-	7
8	17.5	-	-	-	-	-	-	-	-	-	-	-	-	-	-	-	-	-	-	-	-	-	-	-	8
9	17.5	-	-	-	7.5	-	-	-	-	15.7	-	-	-	-	-	-	-	-	-	-	-	-	-	-	9
10	17.5	14.0	-	-	7.5	-	-	-	-	15.5	-	-	-	7.0	-	-	-	-	-	-	-	-	-	-	10
12	17.0	13.1	-	-	7.5	-	-	-	-	15.3	12.5	-	-	7.0	-	-	-	-	-	-	-	-	-	-	12
14	16.5	12.2	9.0	-	7.4	6.0	-	-	-	14.8	11.9	8.8	-	6.9	-	-	-	-	-	-	-	-	-	-	14
16	15.9	11.4	8.6	7.0	7.2	6.0	-	-	-	14.4	11.2	8.4	6.9	6.8	5.8	-	-	-	-	-	-	-	-	-	16
18	14.7	10.7	8.2	6.8	7.0	5.8	-	-	-	13.8	10.5	8.1	6.7	6.6	5.6	-	-	-	-	-	-	-	-	-	18
20	13.7	10.1	7.9	6.6	6.7	5.6	4.6	-	-	12.8	10.0	7.8	6.5	6.4	5.4	4.5	-	-	-	-	-	-	-	-	20
22	12.7	9.6	7.6	6.4	6.4	5.4	4.5	-	-	11.9	9.5	7.6	6.4	6.2	5.2	4.4	-	-	-	-	-	-	-	-	22
24	11.9	9.1	7.3	6.3	6.2	5.1	4.3	3.6	-	11.1	9.1	7.3	6.3	5.9	5.0	4.2	3.6	-	-	-	-	-	-	-	24
26	11.1	8.7	7.1	6.2	5.9	4.9	4.2	3.6	-	10.3	8.7	7.1	6.2	5.7	4.8	4.1	3.6	-	-	-	-	-	-	-	26
28	10.4	8.3	6.9	6.1	5.6	4.8	4.1	3.5	-	9.7	8.3	6.9	6.1	5.5	4.7	4.0	3.5	-	-	-	-	-	-	-	28
30	9.7	8.0	6.7	6.0	5.4	4.6	3.9	3.5	-	9.0	8.0	6.7	6.0	5.3	4.5	3.9	3.5	-	-	-	-	-	-	-	30
32	9.1	7.7	6.6	6.0	5.2	4.4	3.8	3.4	-	8.5	7.7	6.6	6.0	5.1	4.4	3.8	3.4	-	-	-	-	-	-	-	32
34	8.3	7.4	6.4	5.9	5.0	4.3	3.8	3.4	-	8.0	7.5	6.5	5.9	4.9	4.2	3.7	3.4	-	-	-	-	-	-	-	34
36	7.3	7.1	6.3	5.9	4.8	4.1	3.7	3.4	-	7.4	7.2	6.3	5.9	4.7	4.1	3.6	3.3	-	-	-	-	-	-	-	36
38	6.4	6.8	6.2	5.9	4.6	4.0	3.6	3.3	-	6.7	7.0	6.2	5.9	4.6	4.0	3.6	3.3	-	-	-	-	-	-	-	38
40	5.7	6.0	6.1	5.9	4.4	3.9	3.5	3.3	-	5.9	6.3	6.2	5.9	4.4	3.9	3.5	3.3	-	-	-	-	-	-	-	40
42	5.0	5.3	5.5	5.6	4.3	3.8	3.5	3.3	-	5.2	5.5	5.8	5.8	4.3	3.8	3.4	3.3	-	-	-	-	-	-	-	42
44	4.3	4.6	4.8	4.9	4.2	3.7	3.4	3.3	-	4.6	4.9	5.1	5.2	4.2	3.7	3.4	3.2	-	-	-	-	-	-	-	44
46	3.8	4.0	4.1	4.2	4.0	3.6	3.4	3.3	-	4.0	4.3	4.5	4.6	4.0	3.6	3.4	3.2	-	-	-	-	-	-	-	46
48	3.2	3.4	3.5	3.5	3.8	3.6	3.3	3.3	-	3.5	3.7	3.9	3.9	3.9	3.6	3.3	3.2	-	-	-	-	-	-	-	48
50	3.0	3.0	3.1	-	3.3	3.5	3.3	3.3	-	3.3	3.3	3.3	3.3	3.5	3.5	3.3	3.2	-	-	-	-	-	-	-	50
52	2.9	2.9	-	-	3.0	3.3	3.3	3.3	-	3.1	3.1	3.1	3.1	3.1	3.4	3.3	3.2	-	-	-	-	-	-	-	52
54	-	-	-	-	2.7	2.9	3.1	3.2	-	2.9	2.9	2.9	-	2.8	3.0	3.3	3.2	-	-	-	-	-	-	-	54
56	-	-	-	-	2.4	2.6	2.7	2.8	-	-	-	-	-	2.5	2.7	2.9	3.0	-	-	-	-	-	-	-	56
58	-	-	-	-	2.1	2.3	2.4	-	-	-	-	-	-	2.2	2.4	2.6	2.6	-	-	-	-	-	-	-	58
60	-	-	-	-	1.9	2.0	-	-	-	-	-	-	-	2.0	2.2	2.3	2.3	-	-	-	-	-	-	-	60
62	-	-	-	-	-	-	-	-	-	-	-	-	-	1.9	1.9	2.0	-	-	-	-	-	-	-	-	62
64	-	-	-	-	-	-	-	-	-	-	-	-	-	1.8	1.9	-	-	-	-	-	-	-	-	-	64
66	-	-	-	-	-	-	-	-	-	-	-	-	-	-	-	-	-	-	-	-	-	-	-	-	66
68	-	-	-	-	-	-	-	-	-	-	-	-	-	-	-	-	-	-	-	-	-	-	-	-	68
70	-	-	-	-	-	-	-	-	-	-	-	-	-	-	-	-	-	-	-	-	-	-	-	-	70
72	-	-	-	-	-	-	-	-	-	-	-	-	-	-	-	-	-	-	-	-	-	-	-	-	72
74	-	-	-	-	-	-	-	-	-	-	-	-	-	-	-	-	-	-	-	-	-	-	-	-	74

Values in brackets () below or above load capacity, indicate exact radius. / Les valeurs entre parenthèses () notées au-dessus ou en-dessous des capacités, indiquent les portées exactes (pour les dernières). / Die Werten in Klammern unten oder oben den Tragfähigkeiten bedeuten die genaue Ausladung. / Waarden tussen haakjes () onder of boven capaciteiten geven de exacte radius aan

Duty charts of extended folding jib on request

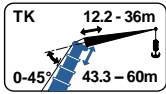


LIEBHERR LTM 1160/2

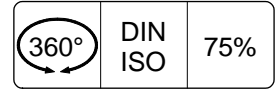
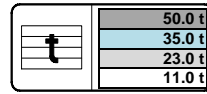
160 TON

Lifting capacities at folding jib (excl. hook block etc.)
Capacités à la fléchette pliante

Tragfähigkeiten am wippbarer Klappspitze
Capaciteiten aan de klapjib



TK



m	↕ 56.3m												↕ 60.0												m
	12.2m				22.0m				12.2m				22.0m				12.2m				22.0m				
	0°	15°	30°	45°	0°	15°	30°	45°	0°	15°	30°	45°	0°	15°	30°	45°	0°	15°	30°	45°	0°	15°	30°	45°	
2	-	-	-	-	-	-	-	-	-	-	-	-	-	-	-	-	-	-	-	-	-	-	-	-	2
3	-	-	-	-	-	-	-	-	-	-	-	-	-	-	-	-	-	-	-	-	-	-	-	-	3
4	-	-	-	-	-	-	-	-	-	-	-	-	-	-	-	-	-	-	-	-	-	-	-	-	4
5	-	-	-	-	-	-	-	-	-	-	-	-	-	-	-	-	-	-	-	-	-	-	-	-	5
6	-	-	-	-	-	-	-	-	-	-	-	-	-	-	-	-	-	-	-	-	-	-	-	-	6
7	-	-	-	-	-	-	-	-	-	-	-	-	-	-	-	-	-	-	-	-	-	-	-	-	7
8	-	-	-	-	-	-	-	-	-	-	-	-	-	-	-	-	-	-	-	-	-	-	-	-	8
9	-	-	-	-	-	-	-	-	-	-	-	-	-	-	-	-	-	-	-	-	-	-	-	-	9
10	10.5	-	-	-	-	-	-	-	-	-	-	-	-	-	-	-	-	-	-	-	-	-	-	-	10
12	10.3	-	-	-	5.7	-	-	-	-	7.8	-	-	-	-	-	-	-	-	-	-	-	-	-	-	12
14	10.0	9.5	-	-	5.7	-	-	-	7.6	7.0	-	-	-	-	-	-	-	-	-	-	-	-	-	-	14
16	9.6	9.2	8.1	-	5.6	-	-	-	7.3	6.8	6.5	-	-	-	-	-	-	-	-	-	-	-	-	-	16
18	9.1	8.7	7.8	6.4	5.6	5.0	-	-	7.0	6.6	6.1	5.5	-	-	-	-	-	-	-	-	-	-	-	-	18
20	8.6	8.2	7.5	6.3	5.5	4.8	-	-	6.6	6.1	5.7	5.3	-	-	-	-	-	-	-	-	-	-	-	-	20
22	8.1	7.7	7.3	6.2	5.4	4.7	4.0	-	6.1	5.7	5.4	5.1	-	-	-	-	-	-	-	-	-	-	-	-	22
24	7.6	7.3	7.0	6.1	5.2	4.5	3.9	-	5.7	5.3	5.1	4.8	-	-	-	-	-	-	-	-	-	-	-	-	24
26	7.2	6.8	6.6	6.0	5.0	4.4	3.8	3.4	5.3	5.0	4.8	4.6	-	-	-	-	-	-	-	-	-	-	-	-	26
28	6.7	6.4	6.2	5.9	4.8	4.3	3.7	3.4	4.9	4.6	4.4	4.3	-	-	-	-	-	-	-	-	-	-	-	-	28
30	6.3	6.0	5.9	5.7	4.6	4.2	3.7	3.3	4.6	4.3	4.2	4.1	-	-	-	-	-	-	-	-	-	-	-	-	30
32	6.0	5.7	5.5	5.5	4.3	4.0	3.6	3.3	4.3	4.1	3.9	3.8	-	-	-	-	-	-	-	-	-	-	-	-	32
34	5.6	5.4	5.3	5.2	4.1	3.8	3.5	3.3	4.0	3.8	3.7	3.6	-	-	-	-	-	-	-	-	-	-	-	-	34
36	5.3	5.1	5.0	4.9	3.9	3.6	3.5	3.2	3.7	3.6	3.5	3.4	-	-	-	-	-	-	-	-	-	-	-	-	36
38	5.0	4.8	4.7	4.7	3.7	3.4	3.3	3.2	3.5	3.4	3.3	3.2	-	-	-	-	-	-	-	-	-	-	-	-	38
40	4.7	4.6	4.5	4.5	3.5	3.2	3.2	3.1	3.3	3.2	3.1	3.1	-	-	-	-	-	-	-	-	-	-	-	-	40
42	4.5	4.3	4.3	4.3	3.3	3.1	3.0	3.0	3.1	3.0	3.0	2.9	-	-	-	-	-	-	-	-	-	-	-	-	42
44	4.3	4.1	4.1	4.1	3.1	2.9	2.9	2.9	2.9	2.9	2.9	2.8	-	-	-	-	-	-	-	-	-	-	-	-	44
46	4.1	3.9	3.9	3.9	2.9	2.8	2.8	2.8	2.6	2.7	2.7	2.7	-	-	-	-	-	-	-	-	-	-	-	-	46
48	3.7	3.8	3.7	3.8	2.8	2.7	2.7	2.7	2.4	2.5	2.6	2.6	-	-	-	-	-	-	-	-	-	-	-	-	48
50	3.2	3.4	3.6	3.6	2.7	2.6	2.6	2.6	2.2	2.4	2.4	2.5	-	-	-	-	-	-	-	-	-	-	-	-	50
52	2.9	3.0	3.2	3.2	2.5	2.5	2.5	2.5	2.0	2.2	2.3	2.3	-	-	-	-	-	-	-	-	-	-	-	-	52
54	2.6	2.7	2.8	2.9	2.4	2.4	2.4	2.4	1.8	2.0	2.1	2.2	-	-	-	-	-	-	-	-	-	-	-	-	54
56	2.3	2.4	2.5	2.6	2.3	2.3	2.3	2.3	1.7	1.8	1.9	2.0	-	-	-	-	-	-	-	-	-	-	-	-	56
58	2.0	2.2	2.2	2.3	2.2	2.2	2.2	2.3	1.5	1.7	1.8	1.8	-	-	-	-	-	-	-	-	-	-	-	-	58
60	1.8	1.9	2.0	2.0	2.0	2.2	2.2	2.2	1.4	1.5	1.6	1.6	-	-	-	-	-	-	-	-	-	-	-	-	60
62	1.6	1.7	1.7	1.7	1.8	2.0	2.1	2.2	1.3	1.4	1.4	1.5	-	-	-	-	-	-	-	-	-	-	-	-	62
64	-	-	-	-	1.6	1.8	1.9	2.0	1.2	1.2	1.3	1.3	-	-	-	-	-	-	-	-	-	-	-	-	64
66	-	-	-	-	1.4	1.6	1.7	1.7	1.1	1.1	1.2	-	-	-	-	-	-	-	-	-	-	-	-	-	66
68	-	-	-	-	1.2	1.4	1.5	1.5	-	-	-	-	-	-	-	-	-	-	-	-	-	-	-	-	68
70	-	-	-	-	1.0	1.2	1.2	1.2	-	-	-	-	-	-	-	-	-	-	-	-	-	-	-	-	70
72	-	-	-	-	-	-	-	-	-	-	-	-	-	-	-	-	-	-	-	-	-	-	-	-	72
74	-	-	-	-	-	-	-	-	-	-	-	-	-	-	-	-	-	-	-	-	-	-	-	-	74

Values in brackets () below or above load capacity, indicate exact radius. / Les valeurs entre parenthèses () notées au-dessus ou en-dessous des capacités, indiquent les portées exactes (pour les dernières). / Die Werten in Klammern unten oder oben den Tragfähigkeiten bedeuten die genaue Ausladung. / Waarden tussen haakjes () onder of boven capaciteiten geven de exacte radius aan

Duty charts of extended folding jib on request

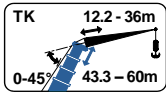


LIEBHERR LTM 1160/2

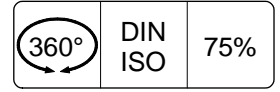
160 TON

Lifting capacities at folding jib (excl. hook block etc.)
Capacités à la fléchette pliante

Tragfähigkeiten am wippbarer Klappspitze
Capaciteiten aan de klappjib



TK



m	↕ 43.3m								↕ 47.6m								↕ 52.0m								m	
	29.0m				36.0m				29.0m				36.0m				29.0m				36.0m					
	0°	15°	30°	45°	0°	15°	30°	45°	0°	15°	30°	45°	0°	15°	30°	45°	0°	15°	30°	45°	0°	15°	30°	45°		
2	-	-	-	-	-	-	-	-	-	-	-	-	-	-	-	-	-	-	-	-	-	-	-	-	-	2
3	-	-	-	-	-	-	-	-	-	-	-	-	-	-	-	-	-	-	-	-	-	-	-	-	-	3
4	-	-	-	-	-	-	-	-	-	-	-	-	-	-	-	-	-	-	-	-	-	-	-	-	-	4
5	-	-	-	-	-	-	-	-	-	-	-	-	-	-	-	-	-	-	-	-	-	-	-	-	-	5
6	-	-	-	-	-	-	-	-	-	-	-	-	-	-	-	-	-	-	-	-	-	-	-	-	-	6
7	-	-	-	-	-	-	-	-	-	-	-	-	-	-	-	-	-	-	-	-	-	-	-	-	-	7
8	-	-	-	-	-	-	-	-	-	-	-	-	-	-	-	-	-	-	-	-	-	-	-	-	-	8
9	-	-	-	-	-	-	-	-	-	-	-	-	-	-	-	-	-	-	-	-	-	-	-	-	-	9
10	-	-	-	-	-	-	-	-	-	-	-	-	-	-	-	-	-	-	-	-	-	-	-	-	-	10
12	5.2	-	-	-	3.4	-	-	-	4.8	-	-	-	-	-	-	-	-	-	-	-	4.4	-	-	-	-	12
14	5.2	-	-	-	3.4	-	-	-	4.8	-	-	-	-	3.2	-	-	-	-	-	-	4.4	-	-	-	3.0	14
16	5.1	-	-	-	3.3	-	-	-	4.8	-	-	-	-	3.2	-	-	-	-	-	-	4.4	-	-	-	3.0	16
18	5.0	4.4	-	-	3.3	-	-	-	4.7	4.1	-	-	-	3.2	-	-	-	-	-	-	4.3	-	-	-	3.0	18
20	4.9	4.4	-	-	3.2	3.0	-	-	4.6	4.1	-	-	-	3.1	-	-	-	-	-	-	4.2	3.8	-	-	2.9	20
22	4.8	4.3	-	-	3.2	2.9	-	-	4.5	4.0	-	-	-	3.1	2.8	-	-	-	-	-	4.1	3.7	-	-	2.9	22
24	4.7	4.2	3.2	-	3.1	2.8	-	-	4.4	3.9	3.1	-	-	3.0	2.7	-	-	-	-	-	4.0	3.6	-	-	2.8	24
26	4.5	4.0	3.1	-	3.1	2.7	-	-	4.2	3.8	3.0	-	-	3.0	2.6	-	-	-	-	-	3.9	3.5	2.9	-	2.8	26
28	4.4	3.8	2.9	2.5	3.0	2.6	2.0	-	4.1	3.7	2.9	-	-	2.9	2.5	-	-	-	-	-	3.8	3.4	2.8	-	2.7	28
30	4.2	3.6	2.8	2.5	2.9	2.5	2.0	-	4.0	3.5	2.8	2.4	-	2.8	2.4	1.9	-	-	-	-	3.7	3.3	2.7	2.4	2.6	30
32	4.0	3.4	2.7	2.4	2.8	2.4	1.9	-	3.8	3.4	2.7	2.4	-	2.7	2.3	1.8	-	-	-	-	3.6	3.2	2.6	2.3	2.5	32
34	3.9	3.3	2.6	2.4	2.7	2.3	1.8	1.5	3.7	3.2	2.6	2.3	-	2.6	2.2	1.7	-	-	-	-	3.5	3.1	2.5	2.3	2.4	34
36	3.8	3.1	2.5	2.3	2.6	2.2	1.7	1.5	3.6	3.1	2.5	2.3	-	2.5	2.2	1.6	1.4	-	-	-	3.4	3.0	2.4	2.2	2.4	36
38	3.6	3.0	2.5	2.2	2.5	2.1	1.6	1.4	3.5	2.9	2.4	2.2	-	2.4	2.1	1.6	1.4	-	-	-	3.3	2.9	2.4	2.2	2.3	38
40	3.4	2.8	2.4	2.1	2.4	2.0	1.6	1.4	3.4	2.8	2.4	2.2	-	2.4	2.0	1.5	1.4	-	-	-	3.2	2.8	2.3	2.1	2.2	40
42	3.2	2.7	2.3	2.1	2.3	1.9	1.5	1.4	3.3	2.7	2.3	2.1	-	2.3	1.9	1.5	1.3	-	-	-	3.1	2.7	2.2	2.1	2.2	42
44	3.1	2.6	2.2	2.1	2.2	1.8	1.5	1.3	3.1	2.6	2.2	2.1	-	2.2	1.8	1.4	1.3	-	-	-	3.0	2.6	2.2	2.0	2.1	44
46	2.9	2.5	2.2	2.0	2.1	1.7	1.4	1.3	3.0	2.5	2.2	2.0	-	2.1	1.7	1.4	1.3	-	-	-	2.9	2.5	2.1	2.0	2.0	46
48	2.8	2.5	2.1	2.0	2.0	1.7	1.4	1.2	2.8	2.5	2.1	2.0	-	2.0	1.7	1.3	1.2	-	-	-	2.7	2.4	2.1	2.0	1.9	48
50	2.7	2.4	2.1	2.0	1.9	1.6	1.3	1.2	2.7	2.4	2.1	2.0	-	1.9	1.6	1.3	1.2	-	-	-	2.6	2.4	2.1	2.0	1.9	50
52	2.6	2.3	2.0	2.0	1.8	1.5	1.3	1.2	2.6	2.3	2.0	2.0	-	1.8	1.5	1.3	1.2	-	-	-	2.5	2.3	2.0	2.0	1.8	52
54	2.5	2.3	2.0	2.0	1.7	1.5	1.2	1.2	2.5	2.3	2.0	2.0	-	1.7	1.5	1.2	1.1	-	-	-	2.3	2.3	2.0	1.9	1.7	54
56	2.4	2.2	2.0	2.0	1.6	1.4	1.2	1.1	2.4	2.2	2.0	2.0	-	1.7	1.4	1.2	1.1	-	-	-	2.2	2.2	1.9	1.9	1.6	56
58	2.2	2.2	2.0	2.0	1.6	1.4	1.2	1.1	2.2	2.2	2.0	2.0	-	1.6	1.4	1.2	1.1	-	-	-	2.1	2.1	1.9	1.9	1.6	58
60	2.0	2.1	2.0	2.0	1.5	1.3	1.1	1.1	2.0	2.1	2.0	2.0	-	1.5	1.3	1.1	1.1	-	-	-	2.0	2.0	1.9	1.9	1.5	60
62	1.7	2.0	2.0	2.0	1.5	1.3	1.1	1.1	1.8	2.1	2.0	2.0	-	1.5	1.3	1.1	1.1	-	-	-	1.7	2.0	1.9	1.9	1.5	62
64	1.5	1.7	1.9	-	1.4	1.3	1.1	1.1	1.6	1.8	2.0	2.0	-	1.4	1.3	1.1	1.1	-	-	-	1.5	1.8	1.9	1.9	1.4	64
66	1.3	1.5	1.6	-	1.3	1.2	1.1	1.1	1.4	1.6	1.7	1.8	-	1.3	1.2	1.1	1.1	-	-	-	1.4	1.6	1.8	1.9	1.3	66
68	-	-	-	-	1.1	1.2	1.1	1.1	1.2	1.4	1.5	-	-	1.2	1.2	1.1	1.1	-	-	-	1.3	1.4	1.5	1.6	1.1	68
70	-	-	-	-	1.0	1.2	1.1	-	1.0	1.2	1.2	-	-	1.0	1.2	1.1	1.1	-	-	-	1.3	1.2	1.3	1.3	-	70
72	-	-	-	-	-	1.0	1.1	-	-	-	-	-	-	-	1.1	1.1	1.1	-	-	-	1.2	1.0	1.2	-	-	72
74	-	-	-	-	-	-	-	-	-	-	-	-	-	-	-	1.0	-	-	-	-	1.1	-	1.2	-	-	74

Values in brackets () below or above load capacity, indicate exact radius. / Les valeurs entre parenthèses () notées au-dessus ou en-dessous des capacités, indiquent les portées exactes (pour les dernières). / Die Werten in Klammern unten oder oben den Tragfähigkeiten bedeuten die genaue Ausladung. / Waarden tussen haakjes () onder of boven capaciteiten geven de exacte radius aan

Duty charts of extended folding jib on request

